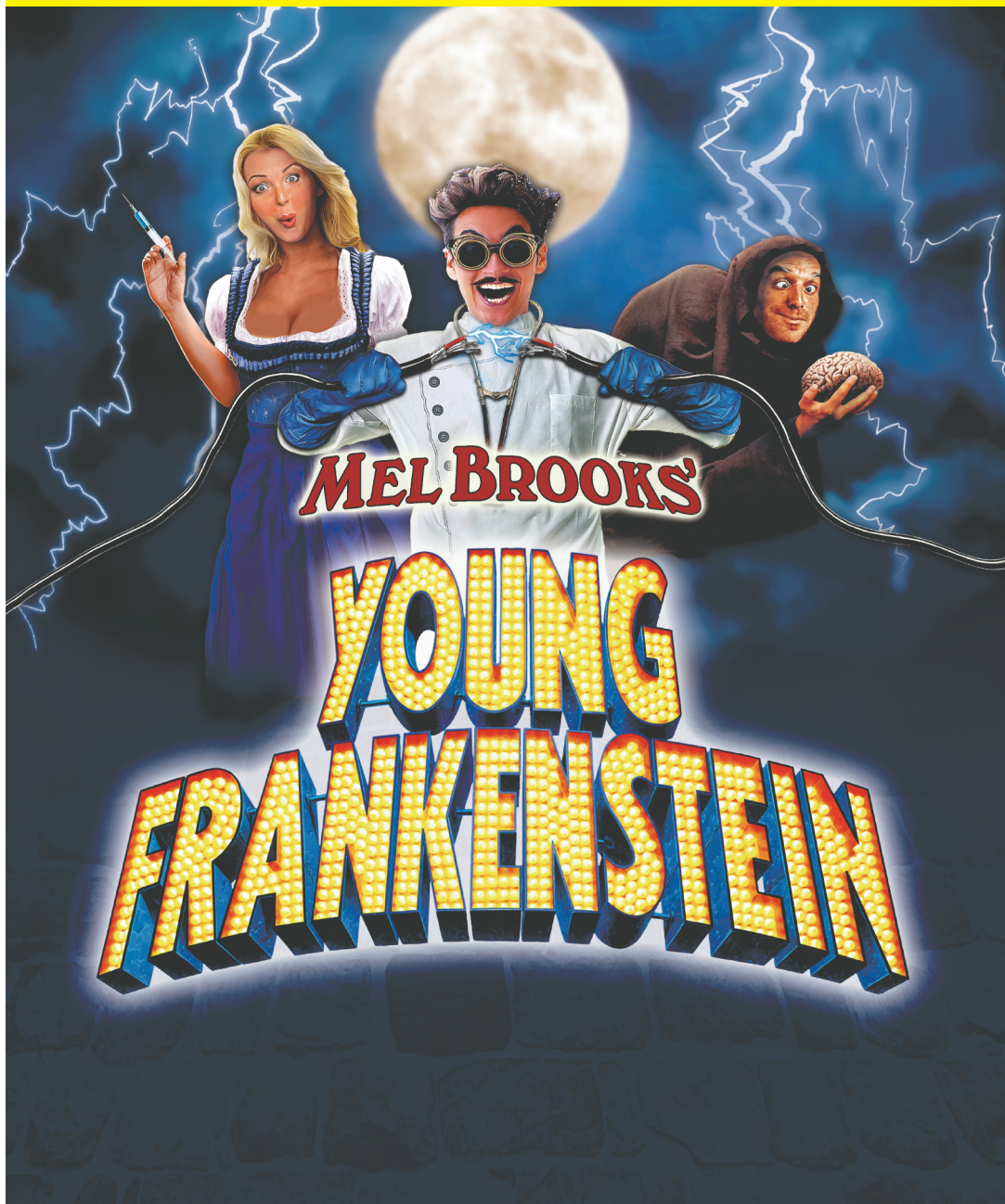


PLAYBILL®



WALNUT STREET THEATRE

PHILADELPHIA, PENNSYLVANIA



PLAYBILL®

Chairman: Arthur T. Birsh
Vice President: Joan Alleman
Secretary/Treasurer: Shamindra Jagnanan

CEO & President: Philip S. Birsh
Chief Financial Officer: Shamindra Jagnanan
Vice President: Alex Birsh
Director of Manufacturing: Robert Cusanelli

Editor in Chief: Mark Peikert
Senior Vice President: Clifford S. Tinder
Senior Production Manager: Maude Popkin
Production Managers: Alex Near
Jenna Perrino

Prepress Manager: Sean Kenny
Art Directors: Kesler Thibert
Brian Libfeld

Creative Services Manager: Dean Greer
Production: Amy Asch
New York Broadway Editors: Scott Hale
Khadijah Rentas

Managing Program Editor: Matt Bonanno
Program Editors: Christy Admiraal
Katie Labovitz
Andrew Rubin
Stephen Vratatos

Publisher & Chief Revenue Officer: Glenn Shaevitz
Associate Publisher: Jolie Schaffzin
Associate Publisher: Michel Manzo
Director, Theatrical Sales: Nicholas Foster
Account Manager: Sarah Carvalho
Director, Restaurant Advertising: Clara Barragán
Senior Director of Advertising: Joshua Stone
Director, West Coast Sales: Jacqui Dziak
Director, Online Advertising & Operations: Jim Cairl
Digital Media Manager: Katie Clooney-Gainey
Director, Playbillder Operations & Community Engagement: Logan Culwell-Block
Ticket Manager: Yadira Near
Playbill Vault Manager: Talaura Harms
Sales Assistants: Leonard Rodino,
Eric Powers

PHILADELPHIA ADVERTISING SALES

Michel Manzo
(610) 527-7047 | mmanzo@playbill.com

Advertising Sales

729 Seventh Avenue, 4th Floor
New York, New York 10019
(212) 557-5757

PLAYBILL® is published by PLAYBILL Incorporated, 729 Seventh Avenue, 4th Floor, New York, NY 10019. Copyright 2019 by PLAYBILL Incorporated. All Rights Reserved. PLAYBILL® is a Registered Trademark of PLAYBILL Incorporated.

Contents

SEPTEMBER 2019

THE PROGRAM

4

Including Cast, Who's Who
and Credits





FOUNDED 1809

AMERICA'S OLDEST THEATRE — PHILADELPHIA'S MOST POPULAR THEATRE COMPANY

WALNUT STREET THEATRE

825 WALNUT STREET • PHILADELPHIA PA 19107

Dear Theatregoer,

Welcome to the 211th Season at the Walnut! We owe our great success to the continued support of loyal theatregoers like you. Thank you for making the Walnut not only the most popular theatre in Philadelphia, but also the most subscribed theatre company in the world!

I'm thrilled that you've joined us for our monstrously mad 2019–20 season premiere, *Young Frankenstein*. This Mel Brooks classic has all the elements of a fantastic season premiere: exciting musical numbers, outrageous characters, and plenty of laughs. The Walnut also has the honor of producing the American premiere of the revised London version of the show, creating a truly special way to kick off our 211th season and I hope that you will join us for the other Mainstage shows.

Spend the holiday season in the land of Far Far Away as the greatest fairy tale never told comes to life with *Shrek The Musical*. Next, Oscar Wilde skewers the upper class of Victorian England in his classic comedy *A Woman of No Importance*. Then, follow an intense game of political cat and mouse in the 48 hours leading up to the presidential nomination with *The Best Man*. We will end our season with the award-winning romantic thriller that produced the best-selling soundtrack of all time, *The Bodyguard*.

We have another intimate and exciting Independence Studio on 3 season planned. Sitting just feet away from our actors, audiences will be fully immersed in world-class theatre and beautifully designed sets. The season opens with *Meteor Shower*—a surprising new comedy written by comedy legend Steve Martin that takes an offbeat look at the comic anxiety lurking just beneath the surface of modern marriage. Please see the materials in our lobby for the full season.

We will also have on stage our WST for Kids series. Parents and grandparents can read books with their children and then see the stories come to life on our stage. This year we're excited to share with you Disney's *Little Mermaid, Jr.*, Charles Dickens' *A Christmas Carol*, *Grace for President*, *Junie B. Jones: The Musical*, and *Nate the Great*. I hope to see the audience filled with the young—and the young at heart!

For now, enjoy the electrifying musical stage adaptation of Mel Brooks' brilliantly funny film, *Young Frankenstein*!

Sincerely,

Bernard Havard, President and Producing Artistic Director

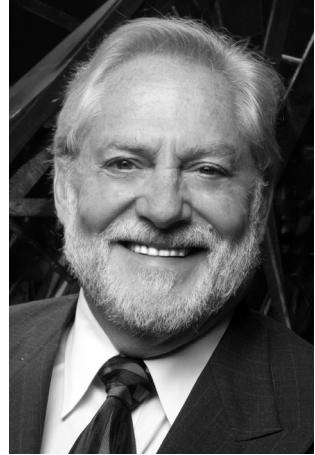


Photo: Mark Garvin



FOUNDED 1809

AMERICA'S OLDEST THEATRE — PHILADELPHIA'S MOST POPULAR THEATRE COMPANY

WALNUT STREET THEATRE

825 WALNUT STREET • PHILADELPHIA PA 19107

BERNARD HAVARD

President and Producing Artistic Director

SEPTEMBER 3 — OCTOBER 20, 2019

Mel Brooks' YOUNG FRANKENSTEIN

Book by
MEL BROOKS and **THOMAS MEEHAN**

Music and Lyrics by
MEL BROOKS

Original Direction & Choreography by **SUSAN STROMAN**

Scenic Design
ROBERT KOVACH

Costume Design
MARY FOLINO

Lighting Design
CHARLIE MORRISON

Sound Design
ED CHAPMAN

Director of Production
SIOBHÁN RUANE

Stage Managers
KATIE CHANCE
ANGELA CUCCO

Orchestrations by
DOUG BESTERMAN and **MARK CUMBERLAND**

Music and Vocal Direction by
CHRIS BURCHERI

Choreography by
MARY JANE HOUDINA

Directed by
CHARLES ABBOTT

SPONSORED IN PART BY



HERMAN GOLDNER CO., INC.
MECHANICAL CONSTRUCTION & SERVICE

MARK D. SYLVESTER
Managing Director

Director of Development
RICHARD
VAN FOSSEN, JR.

Director of Education
T.J.
SOKSO

Director of Marketing
and Public Relations
ED GILCHRIST

THE CAST

(in order of appearance)

Dr. Frederick Frankenstein.....BEN DIBBLE*
Elizabeth Benning CASEY ELIZABETH GILL*
IgorLUKE BRADT*
Inga ALANNA J. SMITH*
Frau Blücher.....MARY MARTELLO*
Inspector Hans Kemp/The Hermit FRAN PRISCO*
The MonsterDAN OLMSTEAD*

ENSEMBLE

ROBERT ABDOO*, DREW FRANKLIN*, BONNIE KELLY*, ADAM MANDALA*,
CARY MICHELE MILLER*, ROBERT MINTZ*, COLIN PRITCHARD*,
AUDREY SIMMONS, KAYLA ANNE TARPLEY, MARK WILLIAM*

UNDERSTUDIES

HANNAH GRACE BREED (Ensemble), LAUREN PAIGE BRISTOW (Ensemble),
ZACHARY DEBEVEC (Ensemble), MICHAEL GUERRIERE (Ensemble),
ETHAN JAMES LYNCH (Ensemble), CARY MICHELE MILLER (Elizabeth Benning),
LINDSAY MAUCK (Frau Blücher), ROBERT MINTZ (Igor), COLIN PRITCHARD
(The Monster), CHRISTOPHER DAVID ROCHÉ (Inspector Kemp/The Hermit),
AUDREY BIEHL SIMMONS (Inga), JJ VAVRIK (Frederick Frankenstein)

Dance Captain.....ROBERT ABDOO

* The Actors and Stage Managers employed in this production are members of
Actors' Equity Association, the theatre union of Professional Actors and Stage Managers
in the United States.

The videotaping or other video or audio recording of this production is strictly prohibited.

“Puttin’ on the Ritz”

Words and music by Irving Berlin © 1928, 1929 by Irving Berlin (ASCAP)© Renewed

Book © by Brooksfilm Limited and Thomas Meehan

Music and Lyrics © 2007 by Brooksfilm Limited

Young Frankenstein

Is presented through special arrangement with Music Theatre International (MTI).

All authorized performance materials are also supplied by MTI.

www.MTIShows.com

SCENES & MUSICAL NUMBERS

New York City and Transylvania, 1934

ACT ONE

- Scene 1: Anthony & Johns Hopkins School of Medicine
“The Brain” Frederick & Students
- Scene 2: A Hudson River Pier
“Please Don’t Touch Me” Elizabeth, Frederick & Passengers
- Scene 3: Transylvania Heights Train Station
“Together Again” Frederick, Igor
- Scene 4: Woodlands Near the Train Station
“Roll in the Hay” Inga, Frederick, Igor
- Scene 5: Outside Castle Frankenstein
- Scene 6: Library of Castle Frankenstein
- Scene 7: Castle Frankenstein Laboratory
“He Vas My Boyfriend” Frau Blücher
“It Could Work” Frederick, Igor, Inga, & Frau Blücher
- Scene 8: Transylvania Heights Town Square
“Hang Him Til He’s Dead” Kemp & Quartet
- Scene 9: Castle Frankenstein Laboratory
“He Vas My Boyfriend (Reprise)” Frau Blücher
- Scene 10: Courtyard of Castle Frankenstein
“Welcome to Transylvania” Kemp & Company
“Transylvania Mania” Igor, Frederick, Inga & Company

There will be one 20-minute intermission

ACT TWO

- Scene 1: Transylvania Heights Town Square
“He’s Loose” Kemp & Villagers
- Scene 2: Castle Frankenstein Laboratory
“Listen to Your Heart” Inga
“Surprise” Elizabeth, Igor, Frau Blücher & Entourage
- Scene 3: The Hermit’s Cottage
“Someone” Hermit
- Scene 4: Dungeon of Castle Frankenstein
- Scene 5: Loew’s Transylvania Theatre
“Puttin’ On The Ritz” Frederick, The Monster, Inga, Igor & Company
- Scene 6: Cave in the Forest Surrounding Transylvania Heights
“He’s Loose (Reprise)” Kemp & Villagers
“Deep Love” Elizabeth
- Scene 7: Castle Frankenstein Laboratory
“Frederick’s Soliloquy” Frederick
“Deep Love (Reprise)” The Monster
“Finale Ultimo” The Company

ORCHESTRA

Piano/Conductor: Chris Burcheri
Associate Conductor: Daniel Espie — Piano/Conductor, October 15–20.
Reed 1 (Flute, Clarinet, Alto Sax): Frank Mazzeo
Reed 2 (Clarinet, Bass Clarinet, Tenor Sax): Bob Quaile
Lead Trumpet, Flugelhorn: Jim Ward; Trumpet 2: Joe Scannella
Bass: Fred Weiss; Drums/Percussion: Joe Nero
Violin, Concertmaster: Rebecca Ansel

PLAYBILLVAULT.COM

WALNUT STREET THEATRE 7

THE CAST



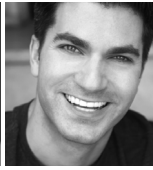
**Robert
Abdo**



**Luke
Bradt**



**Ben
Dibble**



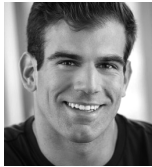
**Drew
Franklin**



**Casey Elizabeth
Gill**



**Bonnie
Kelly**



**Adam
Mandala**



**Mary
Martello**



**Cary Michelle
Miller**



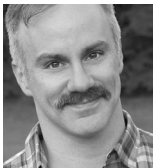
**Robert
Mintz**



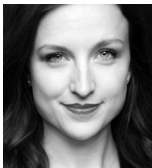
**Dan
Olmstead**



**Fran
Prisco**



**Colin
Pritchard**



**Audrey
Simmons**



**Alanna J.
Smith**



**Kayla Anne
Tarpley**



**Mark
William**

WHO'S WHO IN THE CAST

ROBERT ABDOO (Ensemble/Dance Captain) Happy to be returning to the Walnut for his eighth production. Last seen here in *High Society*. Other WST productions include: *Crazy for You*, *Anything Goes*, *Singing in the Rain*, *Annie Warbucks*, *42nd Street* and *Oliver*. More recent; *Annie* at the Westchester Broadway Theatre. Tours include: *42nd Street* and *Fiddler on the Roof*. Many thanks to Bernard, Chuck and Mary Jane.

LUKE BRADT (Igor) Originally from Saint Paul, Minnesota, Luke received his B.F.A. in Musical Theatre and Philosophy from the University of Wisconsin - Stevens Point. This is Luke's second appearance at the Walnut, having last been seen in *Annie*. Recent Favorites: *Ragtime* (Eagle), *Cinderella* (People's Light), *Biloxi Blues* (Act II Playhouse). Love to Nicole.

BEN DIBBLE (Dr. Frederick Frankenstein) Honored to be appearing in his 22nd Mainstage WST production! WST highlights: *Comedy of Tenors* (Max), *Holiday Inn* (Jim Hardy), *Noises Off* (Garry LeJeune), *Saturday Night Fever* (DJ Monty), *Harvey* (Elwood), *High Society* (Mike), *Dirty Rotten Scoundrels* (Freddy-Barrymore

nom.), *The Producers* (Leo-Barrymore nom.), *Arsenic and Old Lace* (Teddy), *9 to 5*, *Hairspray* (Corny Collins), many others. Favorites: *Fun Home*, *Parade* (Barrymore winner), *Herringbone* (Barrymore winner), *Private Lives*, *Henry V*, *Candide*. Love to Amy and the Dibbles.

DREW FRANKLIN (Ensemble) Broadway: *R&H Cinderella*. NYC: *Lady Be Good* (with Tommy Tune), *Where's Charley?*, *Elf*, *Radio City Christmas Spectacular*. Tours: *Something Rotten*, *White Christmas*, *Elf*, *Cats*, *A Chorus Line*. Previous Walnut: *Curtains*, *How to Succeed...* and *Memphis*. Glad to be back! For Mom.

CASEY ELIZABETH GILL (Elizabeth Benning) is thrilled to be back at the Walnut where she has appeared in *Holiday Inn* (Daphne, Lila u/s), *South Pacific* (Dinah, Nellie u/s), and *Matilda* (ensemble). Other regional credits include: *The Drowsy Chaperone* (Janet), *Hair* (Sheila), *Thoroughly Modern Millie* (Millie), *A Chorus Line* (Judy), *A Little Night Music* (Petra). Casey is also an artist and her work can be found at www.rallybirdbrand.com and on Instagram @rallybirdbrand. Love to DF.

WHO'S WHO

BONNIE KELLY (Ensemble) a Philly born and Cherry Hill raised girl is so happy to be back at the WST! Last seen as Lila Dixon in *Holiday Inn*. Other WST Credits: *Wizard of Oz* and *A Christmas Story*. Up Next: *Shrek!* Thanks to Chuck, Mary Jane, Bernard and the WST family! @BonDooz for more!

ADAM MANDALA (Ensemble) is thrilled to be returning to the Walnut Street Theatre! Regional: *Legally Blonde: The Musical* (WST), *Mamma Mia* (WST and Riverside); *Evita* (Riverside); *Newsies* (Coastal Carolina); *West Side Story* (Finger Lakes MTF). Television: "iCarly" (featured dancer). Cruise: Royal Caribbean International. Adam is a proud alum of Temple University. For Grandma Annie and Samantha Cobb. @adammandallla

MARY MARTELLO (Frau Blücher) Over 30 shows at WST; most recently: *Holiday Inn*, *Noises Off*, *The Humans*, *Annie*. Last season, *The Heir Apparent*, Lantern Theatre; *Saint Joan*, DTC; *I Love a Piano*, Gretna Theatre. 18 Barrymore nominations and 5 awards. Mary is proud to be a member of AEA and part of the Philadelphia theater community for over 20 years.

CARY MICHELE MILLER (Ensemble; u/s Elizabeth Benning) is grateful to be back! WST favorites: Linda Mason, *Holiday Inn*; Alice, *Matilda*; Smitty, *H2\$*; Deb, *Elf*; Margy, *State Fair*; Peter Pan, *Peter Pan*; Carrie, *Carousel*. Other favorites: *Little Women* with Maureen McGovern; *Seussical* with Cathy Rigby; Sandra, *Big Fish* (11th Hour). Love to Aaron and our favorite production Maddie.

ROBERT MINTZ (Ensemble; u/s Igor) WST debut! Regional credits include: *Broadway: 3 Generations* (Kennedy Center), *My Fair Lady* (Arena Stage), *Crazy for You*, *The Visit* (Signature Theatre), *On the Town*, *Mary Poppins*, *Producers*, *Little Mermaid* (Olney Theatre Center), *West Side Story* (Gateway Playhouse). BM from CUA. Thanks to Jeffrey, John & David. @mintzterpiecetheater

DAN OLMSTEAD (The Monster) is delighted to return to the Walnut for his 20th Mainstage performance! Select WST credits: *Matilda*, *South Pacific*, *Harvey*, *High Society*, *Arsenic and Old Lace*, *Good People*, *Amadeus*, *Fiddler on the Roof*, *Fallen Angels*, *A Streetcar Named Desire*, *Enchanted April*, *Of Mice and Men*, *The Constant Wife*, *Finian's Rainbow*, *Damn*

Yankees, *She Stoops to Conquer* and *1776*. Dan holds an M.F.A. in Acting from Temple University.

FRAN PRISCO (Inspector Hans Kemp/The Hermit) is thrilled to be back! He just played Bill in *Mamma Mia* at the Fulton Theatre. Recent Walnut appearances include: *Holiday Inn*, *Annie*, *Forum*, and *Last of the Red Hot Lovers*. This season, look for him in *Shrek* and *The Best Man*. Fran has served as Writer, Director, and Emcee of the last two WST Galas. Many thanks to the Walnut family! Love to Siobhán.

COLIN PRITCHARD (Ensemble; u/s The Monster) is honored to make his WST debut! Tours: *42nd Street*, *Billy Elliot*. Regional: Goodspeed, TUTS, Westchester Broadway, Fulton, MacHaydn. Favorite roles include: Freddy in *Dirty Rotten Scoundrels*, Lt. Cioffi in *Curtains*, Nathan in *Guys & Dolls*. BS: Georgetown. Thanks to Mary Jane, Chuck, the Coslovs and Mom. Enjoy the show!

AUDREY SIMMONS (Ensemble; u/s Inga) is elated to be back at the Walnut where she was last seen in *Legally Blonde* and *Holiday Inn*. Other credits include: Janet Van De Graaff (*The Drowsy Chaperone*), Judy/ Cassie (*A Chorus Line*), Graziella (*West Side Story*). Proud alum of UArts. Audrey also enjoys teaching at the Fred Astaire Dance Studios as a certified ballroom instructor. audreysimmons.com

ALANNA J. SMITH (Inga) Willkommen! This is a dream come true. WST: *A Comedy Of Tenors*, *Noises Off*, *A Funny Thing...*, *The Importance of Being Earnest*, *The Wizard of Oz*, *A Christmas Story*. Regional: Fireside Theatre, Media Theatre, Bristol Riverside Theatre, Hangar Theatre. Many thanks to the entire Walnut team. Love to my family, the Tischlers, and Jacob. Teri Garr, I hope I make you proud! alannajsmith.com

KAYLA ANNE TARPLEY (Ensemble) is thrilled to be back on the Walnut stage again! WST: *Holiday Inn*, *Winter Wonderettes*. Theatre Horizon: *Black Nativity* -Barrymore award, Best Ensemble in a musical. New City Stage Company: *Roseburg* -Capital Fringe. Much love to my tribe (you know who you are)! Instagram: _kit.kat.kay_

MARK WILLIAM (Ensemble) has appeared globally in such shows as *My Fair Lady*, *Mary*

WHO'S WHO

Poppins, Mame with Leslie Uggams, and *Jerry's Girls* with Susan Anton. His critically-acclaimed nightclub act, *Come Croon With Me*, tours the country and plays luxury cruises. Debut album available November, 2019 on CD, iTunes, Spotify, etc. markwilliamnyc.com

MEL BROOKS (Book/Music and Lyrics) Director, producer, writer and actor, Mel Brooks is the recipient of three 2001 Tony Awards (Best Score, Best Book of a Musical, Best Musical) and two Grammy Awards (Best Musical Show Album and Best Long Form Music Video) for *The Producers*. Mr. Brooks began his distinguished career during television's "Golden Age" as a writer for Sid Caesar on *Your Show of Shows* in 1951. In 1955 and in 1957, Brooks received Emmy Award nominations (with others) for the best comedy writing for Caesar's Hour, and in 1956 he was nominated (with others) for best writing for a variety or situation comedy. In 1952, Brooks wrote sketches for Leonard Sillman's Broadway smash-hit revue, *New Faces of 1952*, and in 1957, together with Joe Darion, he wrote the book for the Broadway musical *Shinbone Alley*, which starred Eartha Kitt. In 1962, he wrote the book for the Broadway musical *All-American*, starring Ray Bolger. In the '60s, Brooks teamed up with Carl Reiner to write and perform *The 200 Year Old Man* albums, which became immediate bestsellers. In 1960 and 1961, Brooks and Reiner received Grammy Award nominations for the best spoken word comedy for *2000 Years* and for best comedy performance for *2000 And One Years*, respectively. In 1997, Brooks and Reiner teamed up again for *The 2000 Year Old Man in the Year 2000*. Both a book and a CD were released, the CD winning a Grammy Award in 1998 for the best spoken word album: comedy. Brooks wrote and narrated *The Critic*, a short satire on avant-garde art films, which received the Academy Award for best animated short subject in 1964. In 1965, he teamed up with buck Henry and created *Get Smart*, the long-running television show starring Don Adams as Agent 86. Brooks, along with others, received an Emmy Award for outstanding writing achievement in a comedy-variety in 1967 for *The Sid Caesar, Imogene Coca, Carl Reiner, Howard Morris Special*. In 1968, he wrote and directed his first feature film, *The Producers*, starring Zero Mostel and Gene Wilder, which earned him an Academy Award for the best original screenplay written

directly for the screen. He then went on to create a remarkable string of hit comedies: 1970, he wrote, directed and acted in *The Twelve Chairs*; 1974, co-wrote, directed and acted in *Blazing Saddles*, and was nominated, along with John Morris, for the best title song, "Blazing Saddles"; 1974, co-wrote and directed *Young Frankenstein*; 1976, co-wrote, directed and starred in *Silent Movie*; 1977, co-wrote, directed, produced and starred in *History of the World, Part 1*; 1983, produced and starred in *To Be or Not To Be*; co-wrote, directed, produced and starred in the hit sci-fi spoof, *Spaceballs*; 1991, co-wrote, directed, produced and starred in *Life Stinks*; 1993, co-wrote, directed, produced and starred in *Robin Hood: Men in Tights*; 1995, co-wrote, directed, produced and starred in *Dracula: Dead and Loving It*. For three successive seasons, Brooks won the Emmy Award for his role as "Uncle Phil" on the hit comedy show, *Mad About You*. His visionary film company, Brookfilms Limited, founded in 1980, has produced some of America's most distinguished films, among them: David Lynch's *The Elephant Man*, David Cronenberg's *The Fly*, Frances, Richard Benjamin's *My Favorite Year* and *84 Charing Cross Road*, starring Anthony Hopkins and Mr. Brooks' wife Anne Bancroft.

THOMAS MEEHAN (Book) received the Tony Award for co-writing the book for *The Producers* in 2001 and in 2003 for co-writing the book for *Hairspray*. He received his first Tony Award in 1977 for writing the book of *Annie*, which was his first Broadway show, and has written the books for the musicals *Rocky, Elf the Musical, Cry-Baby, Young Frankenstein, Chaplin, Bombay Dreams, I Remember Mama, Ain't Broadway Grand* and *Annie Warbucks*. In addition, he was a long-time contributor of humor to *The New Yorker*, an Emmy-Award winning writer of television comedy, and a collaborator on a number of screenplays, including Mel Brooks' *Spaceballs* and *To Be Or Not To Be*.

CHARLES ABBOTT (Director) Thank you, Bernard: this marks Chuck's 34th WST production since *Oliver* in 1983, but who's counting?! They have included four world premieres, two Barrymore awards, and the Edwin Forrest Lifetime Achievement Award. Regionally, multiple productions at Alabama Shakespeare; Alley in Houston; Atlanta's Alliance (Associate Artistic Director); Fifth

WHO'S WHO

Avenue in Seattle; Fulton in Lancaster; 20 years as Artistic Director for Maine State Music Theatre; Portland Stage; and Houston's TUTS including world premieres of Yeston/Kopit's *Phantom* and a *Follies* that opened the Wortham Theatre Center. First-ever Directing Drama-Logue Award for LA Opera's *Oklahoma!* Broadway and regional theatre actor, he's played over 1,000 performances as *Cabaret's* Emcee. Honored to have an SDC Foundation Fellowship in his name, the 9th host theater will be Chicago Shakespeare's premiere of *Emma*.

MARY JANE HOUDINA (Choreographer) Associate choreographer, movie *The Great Gatsby*; tap consultant, Peter Allen/Radio City. Broadway choreography includes *Into the Light*, associate choreographer original *Annie*. Regionally, *Oklahoma!* (Jean Stapleton), *Follies* (Juliet Prowse), *Show Boat* (Gavin MacLeod). Danced on Broadway in ten shows as well as Peter Gennaro's nightclub act. Received the 1998 Barrymore Award at Walnut St. for *Crazy for You*; nominated in 2001 for *Singin' in the Rain*; 2006 for *42nd Street*. She choreographed the successful *High Society* and is very happy to be back!

CHRIS BURCHERI (Music and Vocal Direction) is excited to be starting his first season as the Walnut's Mainstage music director with *Young Frankenstein*. Previously he has served as the associate conductor on *Annie* and *Holiday Inn*. Based in Philadelphia, he has also music directed at Rutgers-Camden, Friends Central School, and the WST for Kids series, where his musical arrangements can be heard in *A Christmas Carol*. He is a vocal coach at The Brind School at The University of the Arts, and a graduate of the University of Pennsylvania. Thank you to Bernard and Mark for this opportunity. Love to Mom, Dad, Lauren, and Maura.

ROBERT KOVACH (Set Design) has had the honor to design for the Walnut Street Theatre since 2006. Special thanks to Bernard and Mark for the years of opportunities. My family and I appreciate it. An award-winning designer who has designed for Off-Broadway, tours, and theatre throughout the US & Internationally. Robert and his team have designed, managed, and produced corporate events, product launches, general session, and keynotes for Fortune 500 companies

including INTEL, KPMG, Milwaukee Tool, and Chevrolet. KovEntertainment.com

MARY FOLINO (Costume Design) is currently WST's Costume Shop Manager, having previously worked as the Costume Director of the Milwaukee Repertory Theater, and the Assistant Costume Shop Manager here at WST. Favorite WST designs include *Peter and the Starcatcher*, *South Pacific*, *Forum*, *Annie*, *The Humans*, *Holiday Inn*, *Matilda*, *A Comedy of Tenors*, and *The Curious Incident of the Dog... Night-time*. Many thanks to the WST family, all my collaborators on this piece, and the amazing costume and wardrobe staff!

CHARLIE MORRISON (Lighting Design) National/international tours/NYC: *Disney's The Little Mermaid*, *A Christmas Story: The Musical*, *Dr. Seuss's How the Grinch Stole Christmas: The Musical* (NYC, Grand Ole Opry, US Tour), *A Chorus Line* (U.S., Japan, and China), *Chitty Chitty Bang Bang*, *Miss Saigon*, *Aida* (U.S. and Asia), and many others. Regional: Paper Mill Playhouse, Guthrie Theater, Shakespeare Theatre Company (D.C.), Goodspeed Musicals, Seattle Repertory, Seattle 5th Avenue, Sacramento Music Circus, Theatre Under the Stars, and many others. Charlie is the recipient of two Helen Hayes Awards for Outstanding Lighting Design. cmlighting.com

ED CHAPMAN (Sound Design) Walnut Street Theatre: *In the Heights*, *Mary Poppins*, *Wizard of Oz*, *Annie*. Broadway: *Ink* (2019 Tony-nomination Best Sound Design; Associate Designer) and *Travesties* (2018 Tony-nomination Best Sound Design; Associate Designer). Touring Productions: *Disney's The Little Mermaid*, *A Christmas Story*, *How the Grinch Stole Christmas*, *Guys and Dolls*, *The Producers*. Other: *Holiday Inn* (2018 SALT Award nomination), *Mamma Mia!* (2016 Berkshire Theatre Award nomination). Love to John and Gayle, Kate, Mary Ann, Johnny, and Eddie.

DOUG BESTERMAN (Orchestrations) A three-time Tony Award winner (six nominations), Doug's Broadway orchestration credits include: *A Bronx Tale*, *It Shoulda Been You*, *Bullets Over Broadway* (2014 Tony Award nomination), *Rocky*, *On a Clear Day*, *Sister Act*, *How to Succeed in Business Without Really Trying* (2011 Tony Award nomination), *Elf*, *Young Frankenstein* (Drama Desk Award nomination), *Tarzan*, *Dracula*, *Thoroughly*

WHO'S WHO

Modern Millie (2002 Tony Award/Drama Desk Awards), *The Producers* (2001 Tony and Drama Desk Awards), *Seussical*, *The Music Man* (Drama Desk and Tony Award nominations), *Fosse* (1999 Tony Award), *Big* (Drama Desk nomination), *Damn Yankees* (Drama Desk nomination) and *Gentlemen Prefer Blondes*; also: additional orchestrations for *Aladdin*, *Annie*, *Cinderella*, *The People in the Picture*, *Charlie and the Chocolate Factory* and *Anastasia*.

MARK CUMBERLAND (Additional Orchestrations) Mark began his musical career as a chorister with the world-renowned choir of King's College, Cambridge. He has featured in more than 100 West End and Broadway productions as either trumpeter, music copyist, arranger or orchestrator.

KATIE CHANCE (Stage Manager) is happy to join the stage management team at Walnut Street Theatre. Prior to moving back to her hometown of Philadelphia, Katie worked primarily in Washington, DC, where she was the Resident Assistant Stage Manager at Woolly Mammoth Theatre Company. She also worked at many

other theaters along the way. Favorites: Studio Theatre, Signature Theatre, and Contemporary American Theater Festival. Hi Silje and Momert!

ANGELA CUCCO (Stage Manager) is happy to be back at the Walnut for her tenth season! Previously, she stage managed for six seasons upstairs in the Independence Studio on 3. Other stage management credits include Williamstown Theatre Festival, George Street Playhouse, Vineyard Playhouse, Skyline Theatre Company, New York International Fringe Festival and Philly Fringe. Many thanks to Mom, Dad, Laurie, Anthony, Dante and the WST family. Love to David. For Patty.

SIOBHÁN RUANE (Director of Production) This is Siobhán's seventh season at the Walnut. With almost 20 years in the business, Siobhán has worked internationally as a Production Manager and Stage Manager. Previously, Siobhán held the faculty position of Stage Management Advisor at Florida State University's School of Theatre. Additional credits include Cirque du Soleil, Norwegian Cruise Line, Cirque Productions, and various regional theatres. Siobhán holds an undergraduate degree from Rutgers University,

WHO'S WHO

an MFA from the University of Delaware, and is (proudly!) originally from the Jersey Shore.

MARK D. SYLVESTER (Managing Director) Mark is proud to be celebrating his 26th season at the Walnut. His extensive career has spanned Summer Stock to Broadway as an actor, stage manager, box office treasurer, theatre manager, marketing and public relations director and general manager. After several years working with commercial theatre he has devoted his career to non-profit theatre companies since 1987. To date, Mark has been associated with more than 450 stage productions. An avid collector of musical theatre recordings, his collection contains over 3,000 cast albums from around the world. Widely regarded as a theatrical marketing expert, Mark lectures and consults with organizations internationally. He has served on several boards including seven years with the National Alliance for Musical Theatre where he now holds the honorary position of Board Emeritus and the Advisory Committee of Samuel French, the international play publisher and licensing company. With Bernard Havard he co-authored the book *Walnut Street Theatre*. Since he joined the Walnut in 1994 it has become the most subscribed theatre company in the world.

BERNARD HAVARD (President and Producing Artistic Director) *Vox Populi* (The Voice of the People) was written on the Walnut Playbills in the 1800s. Whenever the Walnut has strayed from a populist program, the theatre has gone bankrupt. When I came here 37 years ago, we had no programs and no audience. Today we enjoy the largest subscription of any theatre in the world. So, my thanks to our loyal audience and a warm welcome to newcomers who enjoy and believe in what we do. I have tremendous admiration for the artists who have dedicated their lives to the theatre and the Walnut, in particular. Our theatre is a non-profit 501-C3 institution and we rely on contributed income to extend our reach into the community. Last season we reached more than 172,000 students in our city schools. We have 30 trustees who give their time, wisdom and contributions to help guide this historical treasure. I came to the Walnut in 1982, and I am as excited now about our future as I was in the beginning. My heartfelt thanks to all who enter this theatre. For my biography, go to AboutUs on our web site at WalnutStreetTheatre.org.

COMING ATTRACTIONS AT THIS THEATRE!

MAINSTAGE

- *Shrek The Musical*
- *A Woman of No Importance*
 - *The Best Man*
 - *The Bodyguard*

INDEPENDENCE STUDIO ON 3 Intimate Stories in an Intimate Space

- *Meteor Shower*
- *The Gifts of the Magi*
 - *Thurgood*
 - *Popcorn Falls*
- *Edward Albee's A Delicate Balance*

WST FOR KIDS

- *Disney's The Little Mermaid, Jr.*
 - *A Christmas Carol*
 - *Grace for President*
- *Junie B. Jones: The Musical*
 - *Nate the Great*

WALNUT STREET THEATRE SCHOOL

For information on the Fall 2019 semester beginning September 28th, or Spring 2020, call 215-574-3550, ext. 510.

Buy a subscription
or individual tickets
at **215-574-3550** (10am-10pm),
WalnutStreetTheatre.org
or Ticketmaster.com, 800-982-2787

CONNECT WITH US!



Like us on Facebook
[Walnut Street Theatre](https://www.facebook.com/WalnutStreetTheatre)



Join us on Twitter
[@WalnutStTheatre](https://twitter.com/WalnutStTheatre)



Post your photos
on Instagram
[@WalnutStreetTheatre](https://www.instagram.com/WalnutStreetTheatre)



Watch our videos
on YouTube!
[Walnut St. Theatre](https://www.youtube.com/WalnutStTheatre)

WALNUT STREET THEATRE

825 Walnut Street, 215-574-3550

BOARD OF TRUSTEES

President..... **Bernard Havard**
Chair..... **Scott Rankin**
Immediate Past Chair..... **Richard A. Mitchell, Esq.**
Chairman Emeritus **Louis W. Fryman, Esq.**
Chairman Emeritus **Matthew Garfield**
Chairman Emeritus **John D. Graham**
Vice Chair/Secretary..... **Ramona Gwynn**
Vice Chair..... **Francis J. Mirabello, Esq.**
Treasurer..... **Robert L.B. Harman**

David S. Blum
 Ronald E. Bowlan
 Jeffrey Ferro
 Christopher Franklin
 Jack R. Garfinkle, Esq.
 Gerald T. Hathaway, Esq.
 Denise Daher Hodgson
 Audrey Merves

Patrick Mullen
 Keith D. Schneck
 James D. Scully, Jr.
 Jon C. Sirlin
 Ellen Tobie
 Todd C. Vanett
 Richard Woosnam

ALUMNI TRUSTEES

Ashok N. Bakhru, Bruce Belzak, George M. Chamberlain, Jr., Thomas J. Coultres, Louis J. D'Ambrosio, Allan M. Dabrow, Joseph E. Ellis, Sr., Barry Genkin, Albert A. Giagnacova, ChFC, CLU, Terry Graboyes, Michael Hagy, Joanne Marie Harmelin, Jeremy D. Johnson, Kenneth E. Kirby, Robert A. Korn, Ben Lipitz, Theresa E. Loscalzo, Esq., Craig R. MacQueen, James E. Marks, Kyle Anne Midkiff, George W. Murphy, Ann Marie Richter, Renee H. Rollin, Dolly Beechman Schnall, Martin W. Spector, James M. Tholey

HONORARY MEMBERS

Mr. Charles Fuller, Ms. Carole Haas Gravagno,
 Ms. Anne Jackson, Mr. Stephen Sondheim,
 Hon. Mark Squilla, Ms. Lily Tomlin

WALNUT STREET THEATRE STAFF**ARTISTIC****President and Producing**

Artistic Director..... **Bernard Havard**
 Assistant to the Producing Artistic Director/
 Casting Director Rita Sirianni
 Casting/Literary Apprentice..... Juliana Whelan

ADMINISTRATION

Managing Director..... **Mark D. Sylvester**
Company Manager..... **Daniel Ludwig**
 Karabell Management Apprentice..... Emma Kusker
Controller **Michael S. Armento**
 Assistant to the Controller..... Lidwina Lo
Audience Services Manager..... **Angelia Evans**
 Assistant Audience Services Manager..... Benjamin Deivert
 Audience Services Apprentices..... Maria Carroll,
 Crys Clemente
Refreshment Services Manager..... **Mary Kate McMullen**
Facilities Manager..... **Bruce Myers**
 Assistant to the Facilities Manager Tony Sample
 Environmental Services Purnell Autry, Kiesha Bailey,
 Greg Cook, Denise Edwards, Demetrius Hill,
 Yuri Jenkins, Camielle Johnson, Victoria Robinson

DEVELOPMENT

Director of Development **Richard Van Fossen, Jr.**
 Development Officer Maura Ricci
 Development Officer Robert Batson
 Development Assistant Daniel Lord
 Development Apprentice Alexa Golieb

EDUCATION

Director of Education..... **T.J. Sokso**
 Assistant Director of Education Amanda Pasquini
 Education Programs Associate Nate Golden
 Resident Teaching Artist..... Ali Walker
 Education Apprentice..... Quanece Thompson
 Acting Apprentices..... Oliver Feaster, Jasonica Moore,
 Andrew Mullin, Sam Paley,
 Theatre School Faculty..... Jessica Bedford Close,
 Jesse Bernstein, Sarah Biddle, Jared Calhoun, Milena
 Olson, Sharon Geller, Miriam Grace, Heidi Hayes, Julia
 Kershetsky, Kimberly Maxson, Drucie McDaniel, Taylor
 Mitchell, Nick Parker, Susan Riley Stevens, Faith Sacher,
 Peter Schmitz, Jacob Schrimpf, Devon Sinclair,
 Rita Sirianni, David Stradley, Jacob Tischler

MARKETING

Director of Marketing and Public Relations..... **Ed Gilchrist**
 Communications and PR Manager Daniel Lopez
 Marketing and PR Associate..... Sarah Biddle
 Sales Manager..... Lance Charen
 Public Relations Apprentice Kevin Vestal
 Marketing Apprentice Meri Mauro
Box Office Treasurer **Rick Dougherty**
 Assistant Box Office Treasurer Tom Brzozowski
Ticketing Services Manager..... **Matthew Morrell**
 Associate Ticketing Services Manager..... Ava DeFrancesco
 Ticketing Services Associate..... Joelle Paull
 Subscriptions Apprentice..... Naomie Castin
 Senior Ticketing Service Agents..... Elizabeth Childs,
 Liam Mulshine, Cynda Purnell,
 Amanda Robinson, Onya Russell
 Senior Tele-Sales Agents..... Joseph Bolc, Omar Cameron,
 Mark Donic, Nasseem El, Maria Guiang,
 Andre Mack, Keith Porter, Sal Testa,
 Rob Waldman, Elliot Waters, Hardie Wedeen

PRODUCTION

Director of Production **Siobhán Ruane**
 Assistant Production Manager Lindsay Cook
 Production Associate Megan Lampron
 Production Management Apprentice Kat Margaret Phifer
Stage Managers..... **Katie Chance, Angela Cucco**
 Stage Management Apprentices..... Patrick L. Johnson,
 Christian Marshall
 Studio 3 Stage Manager..... Kelly Schwartz
 Studio 3 Stage Management Apprentice .. Julianna Holzmann
Technical Director..... **Brian Froonjian**
 Assistant Technical Director Kyle Amick
 Shop Management Apprentice Mikayla Fancella
 Head Carpenter Jeremy Webb
 Carpenters..... Charlie Margies, Sean Dembeck, Paul Hewitt
 Carpentry Apprentices Kerry Frank, Kelly Palmer
 Scenic Charge Leslie Curd
 Assistant to the Scenic Charge Sarah Ganek
 Scenic Artist Radha Vakharia
 Scenic Apprentice Diane Zimmerman
Properties Manager..... **Greer Duckworth**
 Properties Associate Leighann Westermeyer
 Properties Management Apprentice..... Lea Burlew
 Head Properties Artisan Natalie Reichman
 Properties Artisan Davis Caramanico
 Properties Artisan Apprentices..... Matthew Barth, Emily Davis
Costume Shop Manager..... **Mary Folino**
 Assistant Costume Shop Manager..... Rebecca Dwight
 Costume Apprentices..... Carly Polizzi, Tori Lewis
 Lead Dresser Alison Levy
 Dressers Amari Callaway, Anya Loverdi
 Stitchers Kayla Speedy, Sarah Mitchell,
 Abigail Stenner, Gretchen Ellis
 Wig Designer Gerard Kelly
 Makeup Designer Dena Olivieri
 Wig Apprentice..... Emily Fox

Stage Crew
 Head Carpenter..... Jeff Weigel
 Head Electrician..... Matthew Sanatore
 Head Flyman..... Tyler Shipley
 Head Sound..... Adam Orseck
 Head Props..... Valerie Bannan
 Seasonal Assistant Lighting..... John Szarka

Seasonal Assistant Sound..... Zack McKenna
 Stage Crew Apprentice..... Andrew Martinez
 Costume Stock Coordinator..... Katie Yamaguchi
 Load-In Manager..... Matt DeMascolo
 Assistant Lighting Designer..... Sasha Anistratova
 Doctors..... Jeff. Fam. Med. Assoc., Jeff. Otolaryngology



Actors' Equity Association (AEA), founded in 1913, represents more than 45,000 actors and stage managers in the United States. Equity seeks to advance, promote and foster the art of live theatre as an essential component of our society. Equity negotiates wages and working conditions, providing a wide range of benefits for its members, including health and pension plans. AEA is a member of the AFL-CIO, and is affiliated with FIA, an international organization of performing unions. The Equity emblem is our mark of excellence. actorsequity.org



UNITED SCENIC ARTISTS REPRESENTS DESIGNERS FOR THE AMERICAN THEATRE



MUSICIANS REPRESENTED BY THE AMERICAN FEDERATION OF MUSICIANS



BACKSTAGE EMPLOYEES AND SCENE SHOP EMPLOYEES ARE REPRESENTED BY THE INTERNATIONAL ALLIANCE OF THEATRICAL STAGE EMPLOYEES. (I.A.T.S.E.)



The Director and Choreographer are members of the STAGE DIRECTORS AND CHOREOGRAPHERS SOCIETY, a national theatrical labor union.

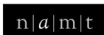
PROUD MEDIA PARTNERS FOR THE 2019–20 SEASON



6abc is Philly Proud and honored to support the work and mission of Walnut Street Theatre, the oldest theatre in America! What is Philly Proud? All across the Delaware and Lehigh Valleys, people of all ages are doing wonderful things to improve their communities, and to make life better for their neighbors and friends. Whether you're in Center City, the Jersey Shore, Wilmington, or the Poconos, 6abc Action News is committed to showcasing all these good works and wants you to be proud. Be Philly Proud!



Metro, Philadelphia's #1 newspaper, is proud to partner with Walnut Street Theatre, now in its 211th season, in supporting Philadelphia's artists and promoting art education in the local communities. Pick up Metro every Thursday for our Going Out section or read it online at metro.us.



NATIONAL ALLIANCE for MUSICAL THEATRE

The mission of the Walnut Street Theatre Company is to sustain the tradition of professional theatre and contribute to its future viability and vitality. It does so through the production and presentation of professional theatre; the encouragement, training and development of artists; the development of diverse audiences; and the preservation and chronicling of its theatre building, a National Historic Landmark.



Walnut Street Theatre is a member of the Greater Philadelphia Cultural Alliance, Citizens for the Arts in Pennsylvania, the National Alliance for Musical Theatre and the League of Historic American Theatres.



Walnut Street Theatre receives support through a grant from the Pennsylvania Council on the Arts, a state agency funded by the Commonwealth of Pennsylvania.



Independence STARTS HERE!

Walnut Street Theatre acknowledges with appreciation Bryce's Catering Company (Wynnewood, PA) for their elegant catering of theatre events.



PENNSYLVANIA The State Organization on Arts and Disability

Accessibility Equipment, Training and Marketing provided by Independence Starts Here, the statewide cultural accessibility program of VSA PA/Amaryllis Theatre Co., jointly led in different regions in PA by cultural partners in that region. In Greater Philadelphia, Independence Starts Here is jointly led by Art-Reach, Inc.



ART-REACH

Support for Walnut Street Theatre's general operations provided in part by the Philadelphia Cultural Fund.

Walnut Insiders Network is brought to you by PNC Arts Alive.



THANKS TO OUR SUPPORTERS

Walnut Street Theatre wishes to express gratitude to the following individuals, corporations, foundations and government agencies for their annual contributions to America's Oldest Theatre.

FORREST SOCIETY (\$25,000+)

Matt Garfield
Frank & Ramona Gwynn
Bernard Havard and
Judy Capuzzi Havard*
Parx Casino
PECO
Pennsylvania Council on the Arts

P.J. Clarke's
PNC Arts Alive
Scott and Sharon Rankin
The Shubert Foundation
Louis and Bessie Stein
Foundation Fund #2
Stradley Ronon Stevens & Young LLP

Syde Hurdus Foundation
The Walt Disney Company
William Penn Foundation

BOOTH SOCIETY (\$10,000+)

The Rebecca Capuzzi Memorial Fund
The Peter and Audrey Denton Fund
Drinker, Biddle and Reath LLP
Jeff & Janie Ferro
Herman Goldner Company
Horace W. Goldsmith Foundation

The Hamilton Family Foundation
Bob & Louise Harman
Ken & Nancy Hellendall
Independence Foundation
Philadelphia Insurance Companies
Shriner's Hospital for Children

TD Bank
Universal Health Services
Vulcan Spring & Mfg. Co.
Mr. and Mrs. Philip and Margaret
Masters

BARRYMORE SOCIETY (\$5,000+)

The Aramark Charitable Fund
Drs. James Byers & Stephanie Chuipek
Louis N. Cassett Foundation
St. Christopher's Hospital for Children
Connelly Foundation
Marian & Ken Disken
Gerald & Helga Finsen
Jane James

The Louis W. Fryman Scholarship Fund
John & Janet Marsella, Jr.
Mr. & Mrs. Francis J. Mirabello
Richard A. Mitchell
Maureen E. Molloy
The Mutual Fire Foundation
Pennsylvania Lumbermens
Mutual Insurance Company

Philadelphia Cultural Fund
James D. Scully, Jr. & Marlene Stoczko
Jon C. & Karen P. Sirlin
Roger & Kathi Smith
TD Charitable Foundation
Theatre Forward

CUSHMAN SOCIETY (\$2,500+)

Anonymous (3)
The Abele Family Foundation
Covenant Bank
Dan & Reeva Benau
Jean Berg
David S. Blum & Mark B. Woodland
Dolores & Ronald Bowlan
Bradford White Corporation
Bryn Mawr Trust Company
Bob & Cheryl Carfagno
Commonwealth Land Title
Insurance Company
John & Mary Conlon
Sandy & Joanne D'Orazio
Jack and Ellie Garfinkle
Charles & Dr. Mindy Goldberg Rose

Steven I. & Genevieve Gross
The Hassel Foundation
Kathryn S. Hayes & Victor J. Tortorelli
Charles W. Horn, III &
Patrick M. Rumaker
Sonya & Joseph Kelly
LMC-Plasticsource
Joseph & Peter Lomax
Stephen E. Lore
Christopher & Michele Mahle
Paul J. Marcotte & Karen A. Brown
Edward & Roberta Martin
Mr. & Mrs. Arthur Mattia
Chase & Susan McDaniel
Jack Miller Family Foundation
Robert Peter Miller

Mr. & Mrs. Edward J. Mitchell
Patrick Mullen
Ann & Lanny Patten
The Pennsylvania Trust Company
Caroline J. Sanders Trust #2
Bud & Betty Shapiro
Ronald, Leslie & Amanda Shur
Rowland & Elaine Smith
Stateside Vodka
Charles & Clarice Thum
Dr. & Mrs. Alan and Edye Twer
USLI
Vanguard Group
Marge and Rick Volpe
Carolyn Bunny Welsh & Harry McKinney

JEFFERSON SOCIETY (\$1,500+)

Anonymous (2)	Larry & Nancy George	Drs. Jonni & Roger Moore	Harry E. Springfield, Jr.
Paul M. & Mary Lee Anderson	Ron & Sandy Gould	Mario & Rosemarie Nicolais	Dr. & Mrs. Frank Stearns
Ash Family Foundation	Mr. & Mrs. John D. Graham	Mr. & Mrs. Stuart Ockman	Jesse W. & B. Lois Stuart
Bruce C. Belzak	Carolyn & Donald Hann	Robin Palmieri	Mr. & Mrs. Richard T. Taylor
Gene & Joann Bissell	Jerry & Kate Hathaway	Rev. Lucy Pierre	Mr. & Mrs. Jim Tholey
Thorir & Erna Bjornsson	Mr. & Mrs. Robert and	Jack and Hermene Potts	Lori & Robert Scott Uhl
Mark Braverman	Elizabeth Hulitt	John & Michelle Prevoznik	Frank & Fran Urso
Joseph & Suzanne Calabro	Clara Huntzinger	Linda Ralls	Mr. and Mrs. Mickey Velez
George M. Chamberlain	Karen & Joseph Israel	Mr. & Mrs. Vincent Redes and	Marion M. Walter
Susan Dornstein & Gary Deutsch	Ms. Mary H. Ladd	Morgan	Jim & Stephanie Ward
Andrew, Amos, A.J. & K. Driban	Tony & Jane Lane	Robert & Marilyn Rubin	Alan Wender
Mr. & Mrs. Timothy Duffy	Ginny & Gordon Lapinski	Joyce Sando	Richard & Jocelyn Williams
William Faris	Rosalie and Ben Lipitz	Ellen Schwartz & Jeremy Siegel	Rachel & Brian Wilner
Anthony and Laura Fiorenza	Maureen Lord-Benson	Kathy & Don Shannon	Forrest & Kathy Worrell
Rick & Julie Frost	Mr. & Mrs. Nicholas W. Martino	Roy and Lee Shubert	
Rhoda & Louis Fryman	Steven & Deborah Mongiardo	William R. Snell, Esq.	

KEMBLE SOCIETY (\$1,000+)

Anonymous	Robert J. Eberle Jr.	Mr. & Mrs. Thomas and Angela Kay	Arthur & Marie Salvagno
Actors' Equity Foundation	Gina Evangelista	Meryl Udell & Kelci	Keith Schneck
Daryl and Ronald Albury	Ray & Ruth Fausak	Ken & Elaine Kirby	William & Nancy Seibert Jr.
Marylee & Stuart Alperin	Marilyn J. Faust & Keith Faust	Janet & Lew Klein	Dr. Darius Sholevar & Dr. Priya Gor
The Ani Fiordimando	Rose Anne & Louis A. Fiore	Paul and Beth Koob	Adam & Christine Sigal
Scholarship Fund	Michelle Franklin	Ms. Abbie Lampe	John Solari
Dr. Sucha & Mr. Michael Asbell	Melvyn Freid	Erik Lang	Martin & Cindy Spector
The Barrack Foundation	Robert Fuller	Frank & Darlene Lordi	Steven & Lynne Spencer
Sydney Beckett	Susan M. Garber	Morton and Rhea Mandell, in	Dave & Chris Stanton
Sidney & David Biddle	Marie H. Garfield	honor of the 50th Anniversary	Zalig Stein
Tom and Amy Bohner	James & Wendy Gerber	of Audrey and Stanley Merves	Dolores Sudhop
John & Linda Braceland	Ed and Vaia Gilchrist	Mr. & Mrs. Marchiali	Mark D. Sylvester*
George and Nancy Brodie	Gail & Samuel Goldstein	The Maser Family	Mr. & Mrs. Donald C. Tantum
Tracy A. Broomall	John & Elizabeth Gontarz	Andrew Masterman	Marlene & Joe Testa
Jessica & Jason Brown	David R. Griscorn &	Mr. Patrick McGinley	Robert and Cheryl Traub
William & Joann Butler	Berminna Solem	Jeanette & Richard Merion	M&T Bank/Wilmington Trust
Joseph Candelore & Angelina	Patrick & Shelly Guise	Abrm and D. Walter Cohen	Todd & Barbara Vanett
Wendy & Joseph Casillo	Mr. & Mrs. Roger Hallowell, Jr.	Foundation	Dr. & Mrs. Anthony W. Villare
Anastasia Chrysofos	Carolyn & Donald Hann	Evalind Minor	Mr. & Mrs. Michael B. Walsh
Virginia R. Cragg	Linda Harvey	Ruth & Jerry Mooney	Mr. and Mrs. Paris Washington
Mr. & Mrs. Alan Craig	Jason Haugh	Catherine Mularz	Victoria Werth &
Kimberly & Walter Cwietniewicz	James & Claudia Haviland	Hayler, Robbie, and	Kevin Jon Williams
Drs. Michael B. Dabrow &	James Herman, Esq. &	Meighan Osborn	Kathryn West
Manette K. Fine	Brenda Lee Eutsler, Esq.	Mr. and Mrs. Donald and	Timothy & Leora Wile
Sandy & Steve Daukaus	Robert Hess & Frances Sherr	Dorothy Praiss	Debbie & Ron Wolf
Mary Dauphinais &	Bill & Clare Higgins	Stephen Masley & Lisa Rayder	Faith & Dave Wolford
Thomas Kenney	Denise D. Hodgson and	Kurt Reichert & Theresa Logan	Ruth Anne & David Woolsey
Vic & Eva Dawson	Harris T. Bock	In Memory of Jane K. Emely-Roach	Richard & Diane Dalto Woosnam
Peter & Viviana Van Deerlin	Tom & Joyce Howley	Ann Robinson	
Mr. & Mrs. William P. and	Mr. Lee H. Hudson	Drs. Brad & Elizabeth Robinson	
Susan P. Degler	Julie & Jerry Jacobs	Dr. Renee H. Rollin	
Joseph D'Orazio	Ron & Sandy Johnson	Mr. & Mrs. Robert K. Roush, Jr.	
Dr. Charles & Mrs. Brenda Driben	James T. Johnston, Sr.	Daniel & Wendi Ruddy	

PRODUCING ANGELS (\$500+)

Janice Biron
Mr. & Mrs. Bransby and
Margaret Bushey
Mary Jane Breen
Jim & Mary Brown
Michael J. & Alice L. Brown
Thomas Brzozowski
Bob & Treva Burger
Yvonne & Bruce Burgess
Elizabeth F. Casmus
Ms. Christine Morgan
John T. Chumbley &
Carol Chumbley
Barbara and Gerald Claffie
Dr. Todd & Wendy Cohen
Daniel Comer
Chris & Sara Console
Mr. & Mrs. Robert H. Cook
DBA Jones
Sam Driban &
Marilyn Neuhauser
Mayor & Mrs. Edward
Campbell
Helene Ehrlich-Cohen &
Marc Cohen
Drs. Bruce & Toby Eisenstein
Paul & Janet Engstrom
Kalman & Suzan Fine
The Fox Foundation in Memory
of Rex & Carol Fox
Kate Foyle

Gerald & Jean Frank
Michael C. Friel
Jane and David Galli
Beatriz Garcia
Louisa Garrido
Dr. & Mrs. Robert J. Geller
Mr. & Mrs. Barry H. Genkin
Dr. & Mrs. Gerard Johnson
Al & Luci Giagnacova
Ellen Tobie & Larry Gilberti
Valerie & David Gladfelter
The William Goldman
Foundation
Mr. & Mrs. Robert Goodman
Dr. Marcia & Dr. Alexander
Grande, III
In Memory of
Sandra & Joel Haness
David Hann
Jason Haugh
Lynda & David Herendeen
Alicia & John Hlywak
Bruce & Alice Hudson
Robert & June Hudson
Kathy & Dave Hychalk
Tom & Joann Jordan
Marcia & Ned Kaplin
Ginny & Len Karabell
Kathryn Keithley & Jill Ditton
George Kelley
Donna Kelly

Walter Kissel
Gerhart & Anne Klein
Charitable Fund
Sherrie & Nelson Klein
George F. Koch, Jr. &
Santa A. DiDonato
Mary Kozar
Holly Krause & Family
Sudhir Kumar & Clio Mallin
Harry & Stacy LaBelle
Christine & Oscar Laskin
Mr. and Mrs. Gerald and
Heather Lee
Lawrence Legar
John & Daniela Leone
Beverly and Stephen Levin
Carol & John Little
Boyd & Judith Mackleer
Alexander & Jennifer Macleod
Kenneth Mallin
Tilda Mann
Lana & Linda Marcinek
Julian Maressa
Rick Moog & Pat Martin
Ilene Wolf McCaffrey
Pat & Harold McIlwain
Ellen Mckenna
Rick & Daria Meehl
Miriam & Stan Meltzer
Lois Meyers
Ms. Kyle Anne Midkiff

Joseph E. Miller, Jr. Family
Don & Sue Miller
Kenneth and Linda Morton
Gerry & Brenda Mullane
Christine Mundt
Lisa & Tom Murphy
Thomas P. Obade, MD
Henry and Karen O'Neill
Harvey & Lisa Ostroff
Deborah Ott & Angel Macasieb
Mrs. Joan Palitz
Frank & Anne Palopoli
L. Stephan & Rochelle Perchick
Douglas Perham
Mr. & Mrs. Peter Tallman
Marcia & Don Pizer
Lindsay Pratszenski
Bruce & Cindy Ranganow
Juanita & Pete Ricchiuti
Mrs. Rita Rome
Mary & Paul Rutter
Stephen M. Sader
Anthony J. & Renee Scamuffa
C. H. Schwerter
Mr. & Mrs. Irving Scolnick
Ann Seiberlich
David & Joanne Shaffer
Anand Shah
Rob & Eda Shannon
Mr. & Mrs. C.A. Sherman
Donna Visioli & Cesar Silebi

Rita A. Silvestri
Debbie & Dave Smeltzer
Jerry Hook & Jacqueline Smith
Lisa & Andrew Smukler
Dr. and Mrs. Jason Sorgini
Eric Spare
Bill Spencer
Mary Ann & Bill Stanczak
Mrs. Allie F.B. Stanford
Peggy & David Stedman
Jerry Stein
Mr. & Mrs. Domenic Stellato
Sherryl & Ted Strand
Jonathan Summers
John & Barb Ungerman
Warren Uzialko
Thomas Wados
James & Kathleen Walters
Beau and Val Walton
Raymond & Elizabeth
Weddington
Kurt & Terry Williams
David & Karen Winning
David & Kathleen Wojcik
Gina T. Zegel
Mitch & Randi Zimmer

Anonymous (13)
Mr. & Mrs. James Ahlum
Phillip Altomare
Michelle & Wes Andersen
M. Faith Angell &
Kenneth Carobus
Stephen & Domenick Angilletta
Kay Aspell
Arthur & KC Baldadian
Kimberly & Kara Barker
Mr. & Mrs. Charles Barnard
Lynda Barnes
Neal & Sandy Barnett
Dr. & Mrs. Kenneth J. Basalik
Bruce & Linda Bengtson
Mrs. Carolyn Bennett
Lori Berk
Barbara & Brian Binney
Ken & Marie A. Bishop
Kerry Bluestein
Lucy Boardway
Wendy B. Boer
Bolinski Consulting
Janet, Dan & Jacob Boris
Joseph Botero
Lisa Boyell
Barbara Brady
Theresa Brennan
David & Janet Breskman

Mr. & Mrs. Thomas E.
Brightman
Lee Brooks
Carol E. Brown
Mr. Anthony Bruno
Marilyn R. Burgin
Mr. & Mrs. Christopher Burks
Donnamae Camm
Dorothy Campana
Dr. & Mrs. David Capuzzi
Mr. & Mrs. David Carey
Ralph Carey
Fred Carpentier &
Carol Borzumato
Edward & Dorothy Carter
Ken Cenci &
Nora McElean-Hopson
Ms. Nancy L. Cervino
Clay & Kristie Chandler
Harvey & Jan Chanin
James Chapman
George & Dorothy Chmielewski
Dale & Nancy Choate
Mr. & Mrs. Philip Cloxton
Mr. & Mrs. Peter and Jane
Cohen
Robert & Deborah Cohen
Mr. & Mrs. Frank Cona, Sr.
Jeremi Conaway

BENEFACTORS (\$250+)

Ed & Joelle Connors
John & Marjorie Corbett
Frieda & Marvin Cotler
Richard & Diana Crean
Mary M. Creekmore
Malachi & Olivia Cunningham
George Daly
Robert L. D'Anjolell
Frank DeMonaco
Mr. & Mrs. Joseph P. Denny
Dick & Carol D'Eustachio
David M. & Susan Y. Devor
Gail W. Dillon
David Dondero
Beverly Downie
Steve Eisenstein & Lisa Longo
Dr. Beverly Emanuel
William Evans
Ms. Elizabeth Ewing
Anne M. Farrington
In Memory of Mary Blair Fields
Bill Flannery Automotive
Kathleen Flannery
Joel & Carol Fleisher
Mr. & Mrs. C. Donald and
Mary Forney
Margaret Fretz &
Gerald Heckmann
Stephen & Marian Galer

Robert Garrett
William & Alice Garvey
Chris & Margie Giles
Katherine Glaser
Arlene Goldberg
In Memory of Dina Michelle
Goldstone
Fred & Sue Gordon
Marshall & Maryellen
Goradetzter
Mr. & Mrs. Joseph and
Theresa Grabowski
Rae Greenberg
Eleanor Gribok
Mr. & Mrs. Benjamin Griffith
Steve Griffith
Ina & Earl Gross
Judith Guise
Joseph & Barbara Gura
Christopher Hamilton &
Marguerite Hulett
Mr. & Mrs. John Hammer
Tom and Rosemary Hampton
Dr. John A. Harman
Mr. George Hathaway
Frances Heffner
Jack & Marilyn Hines
Mr. & Mrs. John R. Hogan
Tom & Paula Hollencamp

Louise Hoover
Sandra Horwitz
Alice Houston
Frank Houston and Sue Locke
Jim & Carol Hunsicker
Richard & Becky Hunt
Mr. Kenneth Huth
Tom & Jo Hyden
Jerry Abelson & June Idzal
Gwen Iller
In Memory of Robert I. Incze
Ginny & Frank Jackson
Dr. & Mrs. Stanley R. Jacobs
Mr. Richard Johnson
In Memory of Anne Jones
Dennis Keleshian &
Chris Dostal
John & Barbara Kelly
Norma Kelly
Paul Keulerleber
Lois Khatcodourian
Alan & Henrietta Kiel
Ms Lyn Kinkade
Richard Kirk
Mr. & Mrs. W.A. Kline
Wayne Klotzbach
Charles & Mary Ellen Knothe
Dr. & Mrs. Sylvester Kohut, Jr.
Joseph & Kathryn Kraher

BENEFACTORS, continued

Talbot & Charlotte Kramer Matthew & Dianne Krasney Mr. & Mrs. Douglas Kriebel Anita Lamond Karen & Robert Landman Charles & Lucinda Landreth The Lange Family Joan & Marc S. Lapayowker, MD Andrew & Julia Leader-Smith Nelvin Lee & Stephen Walker Harry & Carol Leopold Suzanne & Stuart Levy Craig & Stephanie Lewis Mr. & Mrs. James Love Patricia Lukasow James Lynch Marie & Bill Magee Joe & Olena Maloney Margot Waitz & Gordon Manin Dr. & Mrs. Harry E. Manser, Jr. Rose M. Marinaro Laura Markowitz & Steven Miller Debbie & Elliott Maser Beth Master Joseph & Rosemarie Matranga John & Mary Mattioni Mr. & Mrs. Steve Mazda Rita A. McBride Beth McCarthy Mr. & Mrs. J. McCarthy	Susan McCullough Mr. & Mrs. Michael McCurdy Mr & Mrs William J. McDonnell Mr. & Mrs. Thomas H. McGann Sandy McGee Carr McMaster Ms. Ellyn McMullin Dr. & Mrs. James Meadowcroft Rev. & Mrs. Raymond and Deborah Merriweather Mr. & Mrs. Antonino Micela Jim & Mary Ann Miles Arthur P. & Marjorie L. Miller Frances Miller John & Susan Miller Patrick Moeller Ms. Wanda Mohr Linda Moore Patricia M. Moore Sean Morrissey Hermann & Barbara Moser Dr. & Mrs. Richard and Bonnie Moses Mr. Stephen Negro Gary Newman Mark Nimchuck Dr. & Mrs. Lawrence Charles Parish Susan Peck Dr. & Mrs. Bernard & Joy Pekala	Mr. David B. Panske Linda Penza Dr. & Mrs. Jerome R. Pietras Mr. & Mrs. Steven B. Pinsky Mr. & Mrs. Martin Pley Jon Pliskin Patricia H. Polinsky Barbara Ponczek Mrs. Judith Porter-LoBue In Memory of Helen M. Powers Mary Prychka Thomas Quinn & Susan Nicodemus Quinn Dr. & Mrs. Christopher Rapuano Suzanne V. Norris, Realtor Sisters of the Redeemer Patricia Rice Dr. & Mrs. Melvyn Richter Christopher Ritchie Carl & Donna Robinson Paul V. Robinson Dr. Mitchell Rodman Sandy Rosenberg Leonard M. Rosenfeld Robert & Sara Sabota John & Lauren Sacks, Property Management Redefined Anna & David Saul Mr. Gerald Schatz James R. Scheuermann Donna Schleper	Lucinda Schwebel Carol & Gregory Scott Gilbert & Michelle Segal Donald & Lela Seidel John & Mary Grace Senatore Mr. & Mrs. David & Claire Service Mark & Diane Sheppard Carol & Douglas Sherwood Celia Shevlin Dick & Maria Shroy Robert Shumelman Marsha M. Silberstein, M.D. Nancy & Alan D. Silverman Ronald M. Silverstein Aaron Simmons James L. Smith Maryrose Smocek John & Christine Sommer Drs. Arthur & Sherry Starr Mr. & Mrs. Donald Staudt, Sr. David & Janice Stickle James D. Scully, Jr. & Marlene Stoczko Mr. & Mrs. Daryl and Linda Stull II Steven & Nancy Talis Mr. & Mrs. Sylvan Taub Joseph Teti Wayne Tabolski Susan & Robert Tribit Anne Umbrecht	Sarah & John VanBuren Joseph & Sandra Vasta Mr. & Mrs. Carmen Vecchio Walter Vogler Lew & Hella Volgenau Dr. Valaida S. Walker Jeff Walsh & Mark Klingensmith John & JoAnn Walsh Mr. & Mrs. Robert and Lucinda Weiner Elizabeth Weinreb Kathleen Wells Wayne & Paula Davis West Joann White Mr. & Mrs. Howard White Russ & Carol Whitman Caron & Elizabeth Williams Ms. Ann J. Williams David Wilson and Elizabeth Lexa Kathy Wingate Eugene Winner Marion M. Wolfert Laurie & Paul Young Sandra Zarodhansky Dr. Stephanie Zarus Susan & Kevin B. Zebrowski Gloria Zingaro & Todd and Nicholas Welch Robert Biron & Karen Zur
---	---	---	--	---

YOUNG LEADERS COUNCIL

Brian Balduzzi Kaitlyn Delengowski	Michael E. Donnini Jr. Sophia Hasib	Lauren B. Jentleson Kathryn Latona	Henry Li
---------------------------------------	--	---------------------------------------	----------

IN KIND

Courier Post METRO Philadelphia	MORE-FM 6ABC	Philly Weekly REAL106.1	Square One WRTI
------------------------------------	-----------------	----------------------------	--------------------

Donors listings as of August 7, 2019

Walnut Street Theatre gratefully acknowledges additional supporters of the annual Angels Campaign online at WalnutStreetTheatre.org/support/ways-to-give.
*Includes a donation made to The Rebecca Capuzzi Memorial Fund, The Ani Fiordimondo Scholarship Fund, The Len Karabell Memorial Fund or The Pamela Wood Fund.
For more information on ways you can support the arts and educational programs at Walnut Street Theatre please contact the Office of Philanthropy at (215) 574-3580.



20TH ANNUAL LIVE & SILENT AUCTION

Friday, October 25th at 6:00pm

Tickets are only \$35 and include a sneak preview of:

SHREK THE MUSICAL

Special \$5 Discount for Subscribers

All money raised benefits The Walnut's Arts Education Programs!

For tickets or questions, call (215) 574-3580