

PLAYBILL®



WALNUT STREET THEATRE

PHILADELPHIA, PENNSYLVANIA

A young boy in a red shirt sits on a grassy hill, looking up at a starry night sky. A constellation is visible in the sky, and a shooting star streaks across the upper right. The title text is overlaid on the sky.

the CURIOUS incident of the DOG in the night-time



AMERICA'S OLDEST THEATRE – PHILADELPHIA'S MOST POPULAR THEATRE COMPANY

WALNUT STREET THEATRE

825 WALNUT STREET • PHILADELPHIA PA 19107

Dear Theatregoer,

Welcome to Walnut Street Theatre! We are thrilled to bring you *The Curious Incident of the Dog in the Night-Time*; the show that was a sensation on Broadway, winning the Tony Award for Best Play. The production that you will see tonight was created entirely here in Philadelphia, specifically for you.

We are excited to have the support of PNC Arts Alive whose generosity is allowing us produce a sensory-friendly performance during the run. Because of this, hundreds of special needs adults and children who might not otherwise be able to attend a traditional performance will be able to experience the power of live theatre.

Next up on the Mainstage, we will conclude our 210th season with the fabulously fun Broadway hit *Legally Blonde: The Musical!* This feel-good musical comedy will be the most fashionable ticket in town and I hope you will join us!

Upstairs in our Independence Studio on 3, we have *Kate: The Unexamined Life*. This one-woman show looks back on the legendary star of the stage and silver screen, Katharine Hepburn. You won't want to miss this elegantly funny and poignant look at this remarkable actress who once graced the Walnut stage.

We are also delighted to have just announced our 211th anniversary season! We'll start it off with the monstrously mad musical comedy, Mel Brooks' *Young Frankenstein*, and then our favorite ogre will take the stage for our holiday production of *Shrek: The Musical*. We will start off the new year with Oscar Wilde's classic comedy of manners, *A Woman of No Importance*, before taking a peek behind the political curtain in Gore Vidal's *The Best Man*. Finally, our season will conclude with the international award-winning smash hit musical, *The Bodyguard*, featuring the songs of Whitney Houston! Join our Walnut family as a subscriber and don't miss out on the excitement.

We would also like to extend an invitation to our 2019 Gala. Join us on May 4 for a night of music performed by your favorite Philadelphia stars. This one-night-only event benefits our Education programs that now serve over 150,000 students and families each year.

For tonight, sit back and enjoy this heartwarming and thrilling adventure story for every one of us.

Sincerely,

Bernard Havard, President and Producing Artistic Director

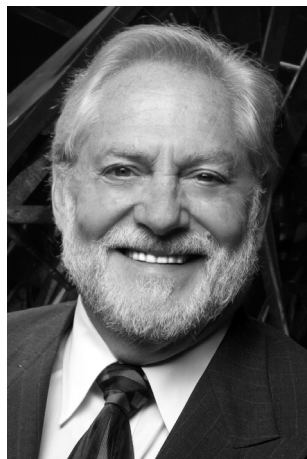


Photo: Mark Garvin



FOUNDED 1809

AMERICA'S OLDEST THEATRE – PHILADELPHIA'S MOST POPULAR THEATRE COMPANY

WALNUT STREET THEATRE

825 WALNUT STREET • PHILADELPHIA PA 19107

BERNARD HAVARD

President and Producing Artistic Director

MARCH 12 – APRIL 28, 2019

THE CURIOUS INCIDENT OF THE DOG IN THE NIGHT-TIME

A play by **SIMON STEPHENS**

Based on the novel by **MARK HADDON**

Scenic Design

ROMAN TATAROWICZ

Lighting Design

RYAN O'GARA

Sound Design

**CHRISTOPHER
COLUCCI**

Costume Design

MARY FOLINO

Projections Design

**CHRISTOPHER
ASH**

Director of Production

SIOBHÁN RUANE

Stage Managers

**LORI AGHAZARIAN
ANGELA CUCCO**

Directed by

BILL VAN HORN

SPONSORED BY

 **PNC**
arts alive
be part of art

**Drinker
Biddle
& Reath
L L P**

**FRANK AND
RAMONA
GWYNN**

THE CURIOUS INCIDENT OF THE DOG IN THE NIGHT-TIME was first presented by the National Theatre, London at the Cottesloe Theatre on August 2, 2012 and transferred to the Gielgud Theatre, West End, London on March 12, 2013. The play opened in the USA at the Ethel Barrymore Theatre on October 5, 2014.

THE CURIOUS INCIDENT OF THE DOG IN THE NIGHT-TIME is presented by special arrangement with Dramatists Play Service, Inc., New York.

MARK D. SYLVESTER

Managing Director

Director of
Education

THOMAS P. QUINN

Director of
Philanthropy

KENNETH A. WESLER

Director of Marketing
and Public Relations

ED GILCHRIST

WALNUT STREET THEATRE 5

THE CAST

(in order of appearance)

Mrs. Shears, Voice #1, Mrs. Gascoyne, Woman on Train,
ShopkeeperSUSAN RILEY STEVENS*

SiobhanALICIA ROPER*

Policeman, Voice #3, Mr. Thompson, Drunk 2,
Man with Socks, London PolicemanJUSTIN LUJAN*

Christopher BooneAUSTIN NEDROW

Duty Sergeant, Voice #2, Mr. Wise, Man behind Counter,
Drunk 1, Roger ShearsGREG WOOD*

Voice #4, Reverend Peters, Uncle Terry, Station Policeman,
Station GuardDAN HODGE*

Voice #5, No. 40, Lady in Street, Information, Punk Girl SARAH GLIKO*

Voice #6, Mrs. Alexander, Posh WomanJANE RIDLEY*

Ed Boone.....IAN MERRILL PEAKES*

Judy Boone.....KAREN PEAKES*

UNDERSTUDIES

LINDA CUNNINGHAM (Voice #6, Mrs. Alexander, Posh Woman),
MARY FISHBURNE (Mrs. Shears, Voice #1, Mrs. Gascoyne, Woman on Train, Shopkeeper),
SARAH GLIKO (Siobhan), KATIE HORNER (Voice #5, No. 40, Lady in Street, Information, Punk
Girl), BLAKE LOWRY (Christopher Boone – 2nd cover), TAYLOR MITCHELL (Siobhan – 2nd
cover), CHRIS MORRISS (Duty Sergeant, Voice #2, Mr. Wise, Man behind Counter, Drunk 1,
Roger Shears), LIAM MULSHINE (Voice #4, Reverend Peters, Uncle Terry, Station Policeman,
Station Guard), KATIE RAULERSON (Judy – 2nd cover), FRANK SCHIERLOH (Policeman,
Voice #3, Mr. Thompson, Drunk 2, Man with Socks, London Policeman), SUSAN RILEY STEVENS
(Judy), GREG WOOD (Ed), KAHLIL A. WYATT (Voice #4, Reverend Peters, Uncle Terry,
Station Policeman, Station Guard – 2nd cover), ERIC ZAVADSKY (Christopher Boone)

* Denotes membership in Actors' Equity Association, the professional union of Actors and
Stage Managers in the United States.

Assistant Director.....Jesse Bernstein

The videotaping or other video or audio recording of this production is strictly prohibited.

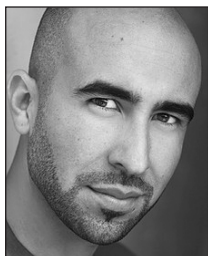
THE CAST



Sarah Gliko



Dan Hodge



Justin Lujan



Austin Nedrow



Ian Merrill Peakes



Karen Peakes



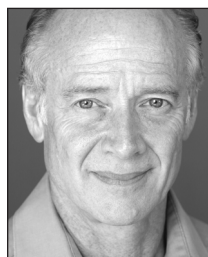
Jane Ridley



Alicia Roper



Susan Riley Stevens



Greg Wood

WHO'S WHO

SARAH GLIKO (Ensemble) Recent WST credits include: *Baskerville: A Sherlock Holmes Mystery*, *Around the World in 80 Days*, *Love Story*, and *The Buddy Holly Story*. She was last seen as “Francesca” in Philadelphia Theatre Company’s *The Bridges of Madison County*. Sarah is a proud member of the Wilma Theater’s critically acclaimed HotHouse ensemble. Wilma favorites: *Mr. Burns: A Post-Electric Play*, *Blood Wedding*, *Constellations*, *When the Rain Stops Falling*, and the U.S. premiere of Tom Stoppard’s *The Hard Problem*. She has also worked locally with Azuka, Arden, Lantern, Inis Nua and Act II Playhouse. Thank you to Bernard and BVH!

DAN HODGE (Ensemble) New York: *Dogs of Rwanda* (Urban Stages). Regional Credits: *Baskerville*, *39 Steps*, *Travels With My Aunt*, *The Mousetrap*, *Private Lives*, *Peter and the Starcatcher* (WST), *The Real Thing* (Wilma), *Glengarry Glen Ross* (Theatre Exile), *Around the World in 80 Days* (Barrymore Award: Leading Actor—Delaware Theatre), *Rape of Lucrece* (Philadelphia Artists’ Collective).

JUSTIN LUJAN (Ensemble) is excited for his debut on the Walnut stage. His MFA is from UC Irvine, he is Certified Teacher with the National Michael Chekhov Association, a graduate of The Groundlings School of Improvisation, and is the Head of Acting at UArts. His love and thanks is to his three ladies.

AUSTIN NEDROW (Christopher Boone) is thrilled and honored to be making his Walnut Street debut in a dream show! Austin has performed regionally at the Fulton Theatre and Maine State Music Theatre. Endless gratitude to Bill, the Walnut staff, mentors, teachers, Grace, Hanke, friends, and family for their support. Stay Curious! IG: austin.nedrow

IAN MERRILL PEAKES (Ed) 10th Walnut show (*Matilda*, *Ideal Husband*, *Of Mice and Men*, *Great Expectations* etc.) and 128th professional production. Two Best of Denver Awards, nominated for seven Barrymores (won 3), four Helen Hayes Awards (won 1) and winner of the 2003 F. Otto Haas Award. Proud Philadelphia actor. For Karen and Owen.

KAREN PEAKES (Judy) has been seen on the Mainstage of the Walnut in *Comedy of Tenors*, *Of Mice and Men*, *Fallen Angels*, and *Born*

Yesterday; and in the Studio space in *Speaking in Tongues*, *Doubt*, and *Last of the Red Hot Lovers*. She has been seen at many theatres in and around Philadelphia, including, The Arden, People’s Light, Act II Playhouse, InterAct, Delaware Theatre Company, Philadelphia Theatre Company, 1812, and The Wilma. Regionally, she has performed with The Peterborough Players, in NH, and The Folger Theatre, in DC. She is also an audiobook narrator, for Brilliance Audio. Love to Ian and Owen.

JANE RIDLEY (Ensemble) Delighted to be at the WST for her fifth show and last seen here in Studio 3 as Juliana in *The Other Place*, Jane’s recent regional experience includes: *Private Lives* (Shakespeare Theatre, DC); *Importance of Being Earnest* (Old Globe); *Sherlock’s Last Case* (Huntington) and *Noises Off*, *Doubt*, *August: Osage County* (Fulton).

ALICIA ROPER (Siobhan) is happy to be back at WST where she previously appeared in *Beautiful Boy*, *Enchanted April*, *The Constant Wife*, and *The Philadelphia Story*. Also Broadway, Off-Off-Broadway, Mark Taper Forum, Seattle Children’s Theatre, Two River Theatre, George Street Playhouse, Yale Rep, and Cleveland Playhouse. MFA: Yale School of Drama. Love to Rob, Max, and Josh.

SUSAN RILEY STEVENS (Ensemble) Favorites at the Walnut include *A Streetcar Named Desire*, *Fallen Angels*, *God of Carnage*, *The Gift*, *Harvey*, *Prescott Method*. She was seen most recently in *Collected Stories* at Act II Playhouse. Regional: Actors Theatre of Louisville, Dallas Theatre Center, People’s Light, Portland Stage Co., Asolo Rep, InterAct Theatre Co., Theatre Horizon, PA Shakespeare Festival, Peterborough Players, Bristol Riverside. MFA: Yale School of Drama.

GREG WOOD (Ensemble) On the WST Mainstage: *Noises Off*, *The Humans*, *Harvey*, *Private Lives*, *God of Carnage*, *Other Desert Cities*. Independence Studio on 3: *Shipwrecked!* and directing *The Gift*, *Mickle Street*, and *The Prescott Method*. Other recent credits include *A Christmas Carol* at the McCarter, *Once* for the Arden Theatre and *Bridges of Madison County* at the Philadelphia Theatre Co. Film and Television: *The Sixth Sense*, *Signs*, *The Happening*, *Killing Emmett Young*,

WHO'S WHO

A Gentlemen's Game, How To Get Away With Murder, and Law & Order.

MARK HADDON (Book) Mark Haddon's *The Curious Incident of the Dog in the Night-Time* was published in 2003. It was the winner of more than 17 literary awards, including prizes in Japan, Holland, and Italy, and was translated into 44 languages. *A Spot of Bother*, published in 2006, was also an international bestseller. His first work for the theatre, *Polar Bears*, was produced by the Donmar Warehouse in 2010. He has written 15 books for children, published a first collection of poetry in 2005, and is an illustrator and award-winning screenwriter. Mark Haddon's latest novel, *The Red House*, was published in 2012.

SIMON STEPHENS (Playwright) has written many plays that have been translated into more than 30 languages and produced all over the world. He is a professor of playwriting at Manchester Metropolitan University, an associate playwright at the Royal Court Theatre, the artistic associate at the Lyric Hammersmith in London, and the Steep Associate Playwright at Steep Theatre in Chicago.

BILL VAN HORN (Director) Recently at Walnut: *Annie, Forum, Oz, A Christmas Story, Mary Poppins, Driving Miss Daisy, Elf, The Prince, Fiddler on the Roof*, directed *The Glass Menagerie*, and created and starred in *O Captain, My Captain: Whitman's Lincoln*. Bill is a permanent member of the acting company at Theatre at Monmouth in Maine. Proud member of Actors' Equity.

ROMAN TATAROWICZ (Scenic Design) Walnut: *Oleanna, In Between, Tell Me on a Sunday, The Humans, Souvenir, Jerry's Girls, The Other Place, RED, I Love a Piano*. Selected Off-B'way: *The Banana Monologues* (Acorn Theatre); *Honky, Roses in December, The Oxford Roof Climber's Rebellion* (Urban Stages); *Mother Courage, The Importance of Being Earnest, Dames at Sea, The Threepenny Opera* (Jean Cocteau Rep). Many Off-Off-B'way including *Bee-Luther-Hatchee* (Audelco Award nom). Additional credits: Capital Rep, Merrimack Rep, Queens Theatre in the Park, Florida Studio Theatre, Azuka Theatre, Act II, InterAct, Bristol Riverside, People's Light and ETC (Santa Barbara). Member United Scenic Artists Local 829. tatarowicz.com

Page 9

2 ads here

WHO'S WHO

MARY FOLINO (Costume Design) is currently WST's Costume Shop Manager, having previously worked as the Costume Director of the Milwaukee Repertory Theater, and the Assistant Costume Shop Manager here at WST. Favorite WST designs include *Peter and the Starcatcher*, *South Pacific*, *Jerry's Girls*, *Forum*, *Annie*, *The Humans*, *Holiday Inn*, *Matilda*, and *A Comedy of Tenors*. Many thanks to the WST family, all my collaborators on this piece, and the amazing costume and wardrobe staff!

RYAN O'GARA (Lighting Design) selected-National Tour: *A Night with Janis Joplin*, *Vocalocity*, *Walking Dead*, *The Little Prince*. Various productions for NYC Opera, Paper Mill Playhouse, Walnut Street, Drury Lane-Chicago, TUTS, Signature DC, New Victory, Laguna Playhouse, Barter Theatre, Lincoln Center Festival, Capital Repertory and Bristol Riverside (2016 Barrymore Award). Associate Lighting Designer for over 25 Broadway productions, currently: *Ain't Too Proud*, *Come from Away* and *Hamilton*. O'Gara graduated from North Carolina School of the Arts. ryanogara.com

CHRISTOPHER COLUCCI (Sound Design) Recent work: *Betrayal* and *Hapgood* (Lantern); *Charlotte's Web* (Arden); *Sweat* (Philadelphia Theater Company); *A Doll's House, Part 2* (Weston Playhouse) and *A Comedy of Tenors* here at the Walnut. Upcoming: *For Peter Pan on Her 70th Birthday* (People's Light); *The God Project* (1812 Productions); and *Skylight* (Gulfshore Playhouse). The recipient of a 2019 Independence Foundation Arts Fellowship. Christopher will be attending the Prague Quadrennial of Performance Design and Space in June. He has received a Pew Fellowship in the Arts as well as 8 Barrymore Awards. MA, Philosophy; Western Kentucky University. For more sounds please visit Soundcloud (soundcloud.com/cmsound) and YouTube (tinyurl.com/yd89tm64)

CHRISTOPHER ASH (Projections Design) Credits include Broadway: *Saint Joan*, *Sunday in the Park With George*; Theater: Wilma, Bearded Ladies, Guthrie, Yale Rep, Philadelphia Theatre Co., Bucks County Playhouse, Hartford Stage, Soho Rep, Paramount, Drury Lane Oakbrook, Chautauqua, Old Globe, Geffen,

South Coast Rep, San Diego Rep, Victory Gardens, Laguna Playhouse, Wallis; Opera: Paris Opera, Lyric Opera Chicago, Canadian Opera, Houston Grand. Training: MFA Yale School of Drama. christopherash.com

LORI AGHAZARIAN (Stage Manager) This is Lori's thirteenth season here at the Walnut. Prior to joining WST, Lori spent seven seasons as PSM at the Prince Music Theater. Freelance credits include Wilma Theater, Opera Co. of Phila., Pig Iron Theatre Co., 1812 Productions, PTC, and the Eugene O'Neill Theater Center. In addition to stage managing, Lori spent five years as the box office manager for the Philadelphia Live Arts Festival/Philly Fringe. For Dad and Daisy.

ANGELA CUCCO (Stage Manager) is happy to be back at the Walnut for her ninth season! Previously, she stage managed for six seasons upstairs in the Independence Studio on 3. Other stage management credits include Williamstown Theatre Festival, George Street Playhouse, Vineyard Playhouse, Skyline Theatre Company, New York International Fringe Festival and Philly Fringe. Many thanks to Mom, Dad, Laurie, Anthony, Dante Carlo and the WST family. Love forever to David.

SIOBHÁN RUANE (Director of Production) This is Siobhán's fifth season at the Walnut. With almost 20 years in the business, Siobhán has worked internationally as a Production Manager and Stage Manager. Previously, Siobhán held the faculty position of Stage Management Advisor at Florida State University's School of Theatre. Additional credits include Cirque du Soleil, Norwegian Cruise Line, Cirque Productions, and various regional theatres. Siobhán holds an undergraduate degree from Rutgers University, an MFA from the University of Delaware, and is (proudly!) originally from the Jersey Shore.

MARK D. SYLVESTER (Managing Director) Mark is proud to be celebrating his 25th season at the Walnut. His extensive career has spanned Summer Stock to Broadway as an actor, stage manager, box office treasurer, theatre manager, marketing and public relations director and general manager. After several years working with commercial theatre he has devoted his career to non-profit theatre companies since 1987. To date, Mark has been associated with

WHO'S WHO

more than 450 stage productions. An avid collector of musical theatre recordings, his collection contains over 3,000 cast albums from around the world. Widely regarded as a theatrical marketing expert, Mark lectures and consults with organizations internationally. He has served on several boards including seven years with the National Alliance for Musical Theatre where he now holds the honorary position of Board Emeritus and the Advisory Committee of Samuel French, the international play publisher and licensing company. With Bernard Havard he co-authored the book *Walnut Street Theatre*. Since he joined the Walnut in 1994 it has become the most subscribed theatre company in the world.

BERNARD HAVARD (President and Producing Artistic Director) *Vox Populi* (The Voice of the People) was written on the Walnut Playbills in the 1800s. Whenever the Walnut has strayed from a populist program, the theatre has gone bankrupt. When I came here 36 years ago, we had no programs and no audience. Today we enjoy the largest subscription of any theatre in the world. So, my thanks to our loyal audience and a warm welcome to newcomers who enjoy and believe in what we do. I have tremendous admiration for the artists who have dedicated their lives to the theatre and the Walnut, in particular. Our theatre is a non-profit 501-C3 institution and we rely on contributed income to extend our reach into the community. Last season we reached more than 172,000 students in our city schools. We have 30 trustees who give their time, wisdom and contributions to help guide this historical treasure. I came to the Walnut in 1982, and I am as excited now about our future as I was in the beginning. My heartfelt thanks to all who enter this theatre. For my biography, go to About Us on our web site at WalnutStreetTheatre.org.

COMING ATTRACTIONS AT THIS THEATRE!

MAINSTAGE

- *Legally Blonde: The Musical*
(May 14 – July 14)

INDEPENDENCE STUDIO ON 3 Intimate Stories in an Intimate Space

- *Kate: The Unexamined Life*
(now – April 7)
- *Civil War Voices*
(April 23 – May 26)

WST FOR KIDS' SERIES

- *Pinkalicious: The Musical*
(March 29 – April 13)
- *Fly Guy: The Musical*
(May 31 – June 8)

WALNUT STREET THEATRE SCHOOL

Contact us about current classes
and our upcoming Camp Walnut!

Call 215-574-3550 x510 or register online
at walnutstreettheatre.org

Buy individual tickets
at **215-574-3550** (10am–10pm),
WalnutStreetTheatre.org
or Ticketmaster.com, 800-982-2787

CONNECT WITH US!



Like us on Facebook
[Walnut Street Theatre](https://www.facebook.com/WalnutStreetTheatre)



Join us on Twitter
[@WalnutStTheatre](https://twitter.com/WalnutStTheatre)



Post your photos
on Instagram
[@WalnutStreetTheatre](https://www.instagram.com/WalnutStreetTheatre)



Watch our videos
on YouTube!
[Walnut St. Theatre](https://www.youtube.com/WalnutStTheatre)

WALNUT STREET THEATRE
825 Walnut Street, 215-574-3550

BOARD OF TRUSTEES

Chair **Richard A. Mitchell, Esq.**
Immediate Past Chair **Denise Daher Hodgson**
Chairman Emeritus **Louis W. Fryman, Esq.**
Chairman Emeritus **Matthew Garfield**
Chairman Emeritus **John D. Graham**
Vice Chair **David S. Blum**
Vice Chair/Secretary **Ramona Gwynn**
Vice Chair **Francis J. Mirabello, Esq.**
Vice Chair **Scott Rankin**
Treasurer **Robert L. B. Harman**

Ronald E. Bowlan
Jeffrey Ferro
Christopher Franklin
Jack R. Garfinkle, Esq.
Albert A. Giagnacova, ChFC, CLU
Gerald T. Hathaway, Esq.
Bernard Havard
Audrey Merves
David Montgomery

Patrick Mullen
Edward Satell
Keith D. Schneck
James D. Scully, Jr.
Jon C. Sirlin
Ellen Tobie
Todd C. Vanett
Richard Woosnam

ALUMNI TRUSTEES

Ashok N. Bakhru, Valli Baldassano, Bruce Belzak,
Maureen Breakiron-Evans, George M. Chamberlain, Jr.,
Rebecca R. Clark, Thomas J. Coultres, Louis J. D'Ambrosio,
Allan M. Dabrow, Joseph E. Ellis, Sr., Barry Genkin, Donald
Gleklen, Bruce Goldberg, Terry Graboyes, Michael Hagy,
Joanne Marie Harmelin, Jeremy D. Johnson, Ira L. Kamens,
Kenneth E. Kirby, Robert A. Korn, Ann M. Liacouras, Ben
Lipitz, Theresa E. Loscalzo, Esq., Craig R. MacQueen,
James E. Marks, Kyle Anne Midkiff, George W. Murphy, Ann
Marie Richter, Renee H. Rollin, Dolly Beechman Schnall,
Martin W. Spector, James M. Tholey, Philip J. Webster

HONORARY MEMBERS

Mr. Charles Fuller, Ms. Carole Haas Gravagno,
Ms. Anne Jackson, Mr. Neil Simon, Mr. Stephen Sondheim,
Hon. Mark Squilla, Ms. Lily Tomlin

WALNUT STREET THEATRE STAFF

ARTISTIC

President and Producing

Artistic Director **Bernard Havard**
Assistant to the Producing Artistic Director/
Casting Director Rita Sirianni
Casting/Literary Apprentice Anna Torchia

ADMINISTRATION

Managing Director **Mark D. Sylvester**
Managing Associate/
Company Manager Kathryn McCumber
Karabell Management Apprentice Hannah Moloshok
Controller **Michael S. Armento**
Assistant to the Controller Lidwina Lo
Financial Assistant Loi Dang
Audience Services Manager **Angelia Evans**
Assistant Audience Services Manager Kris Karcher
Audience Services Apprentices ..Sniya Johnson, Peter Fenton
Facilities Manager **Bruce Myers**
Assistant to the Facilities Manager Tony Sample
Environmental Services Purnell Autry, Kiesha Bailey,
Greg Cook, Denise Edwards, Demetrius Hill, Yuri Jenkins,
Camielle Johnson, Victoria Robinson

DEPARTMENT OF PHILANTHROPY

Director of Philanthropy **Kenneth A. Wesler**
Philanthropy Officer Maura Ricci
Philanthropy Officer Robert Batson

EDUCATION

Director of Education **Thomas P. Quinn**
Assistant Director of Education Jasmine Hammond
Education Programs Associate Amanda Pasquini
Outreach Administrator Nate Golden
Resident Teaching Artist Emily Mattison
Education Apprentice Ali Walker
Acting Apprentices Taylor Mitchell, Katie Raulerson,
Kahlil A. Wyatt, Blake Lowry
Theatre School Faculty Marissa Barnathan,
Jessica Bedford, Jesse Bernstein, Sarah Biddle,
Carly Bodnar, Damon Bonetti, Chris Burcheri, Jared Calhoun,
Milena Corin, Amy Frear, Sharon Geller, Nate Golden,
Billy D. Hart, Heidi Hayes, Lanessa Hickman, Dan Ison,
Jesse Jones, Melissa Joy Hart, Julia Kershetsky, Aine Lafferty,
Mary Martello, Christina May, Drucie McDaniel, Nick Parker,
Miriam Grace Payne, Faith Sacher, Peter Schmitz,
Jacob Schrimpf, Susan Riley Stevens,
David Stradley, Tara Tagliarero, Greg Wood

MARKETING

Director of Marketing and Public Relations **Ed Gilchrist**
Marketing Associate Sarah Biddle
Public Relations Apprentice Paul Naidas
Marketing Apprentice Season Cooper
Box Office Treasurer **Rick Dougherty**
Assistant Box Office Treasurer Tom Brzozowski
Ticketing Services Manager **Matthew Morrell**
Associate Ticketing Services Manager Ava DeFrancesco
Ticketing Services Associate Joelle Paull
Subscriptions Apprentice Ryan Hennessey
Senior Ticketing Service Agents Elizabeth Childs,
Liam Mulshine, Cynda Purnell,
Amanda Robinson, Onya Russell
Tele-Sales Manager **Andy Burr**
Senior Tele-Sales Agents Joseph Bolc, Omar Cameron,
Mark Donic, Nasseem El, Maria Guiang,
Andre Mack, Keith Porter, Sal Testa,
Rob Waldman, Elliot Waters, Hardie Wedeen

PRODUCTION

Director of Production **Siobhán Ruane**
Assistant Production Manager Lindsay Cook
Production Associate Megan Lampron
Production Management Apprentice Caitlin Poller
Stage Managers **Lori Aghazarian, Angela Cucco**
Stage Management Apprentices Emily McGregor,
Adam Swez
Studio 3 Stage Manager Kelly Schwartz
Studio 3 Stage Management Apprentice Dana Katz
Technical Director **Brian Froomjinn**
Assistant Technical Director Kyle Amick
Shop Management Apprentice Sara Simmons
Head Carpenter Jeremy Webb
Carpenters Sean Dembeck,
Zachary Laska
Carpenter Apprentice Leigh Wenk
Scenic Charge Leslie Curd
Assistant to the Scenic Charge Sarah Ganek
Scenic Artist Jennifer Hiyama
Scenic Apprentice Molly Moore
Properties Manager **Greer Duckworth**
Properties Associate Leighann Westermeyer
Properties Management Apprentice Imani Johnson
Properties Artisan Kyle Hanahan
Properties Artisan
Apprentices Maria Monachino, Miranda Cisneros
Costume Shop Manager **Mary Folino**
Assistant Costume Shop Manager Rebecca Dwight
Costume Apprentices Jennifer Miller, Amanda Board
Lead Dresser Deb Holloway
Stitchers Kayla Speedy, Sarah Mitchell
Wig/Wardrobe Apprentice Claire Waid
Wig Designer Dave Bova

Stage Crew
 Head Carpenter Jeff Weigel
 Head Electrician Matthew Sanatore
 Head Flyman Tyler Shipley
 Head Sound Adam Orseck
 Head Props Valerie Bannan

Seasonal Assistant Sound Zack McKenna
 Stage Crew Apprentice Matthew Sawyer
 Costume Stock Coordinator Katie Yamaguchi
 Doctors Jeff. Fam. Med. Assoc., Jeff. Otolaryngology



Actors' Equity Association (AEA), founded in 1913, represents more than 45,000 actors and stage managers in the United States. Equity seeks to advance, promote and foster the art of live theatre as an essential component of our society. Equity negotiates wages and working conditions, providing a wide range of benefits for its members, including health and pension plans. AEA is a member of the AFL-CIO, and is affiliated with FIA, an international organization of performing unions. The Equity emblem is our mark of excellence. actorsequity.org



UNITED SCENIC ARTISTS REPRESENTS DESIGNERS FOR THE AMERICAN THEATRE



The Director is a member of the **STAGE DIRECTORS AND CHOREOGRAPHERS SOCIETY**, a national theatrical labor union.



BACKSTAGE EMPLOYEES AND SCENE SHOP EMPLOYEES ARE REPRESENTED BY THE INTERNATIONAL ALLIANCE OF THEATRICAL STAGE EMPLOYEES. (I.A.T.S.E.)

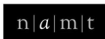
PROUD MEDIA PARTNERS FOR THE 2018–19 SEASON



6abc is Philly Proud and honored to support the work and mission of Walnut Street Theatre, the oldest theatre in America! What is Philly Proud? All across the Delaware and Lehigh Valleys, people of all ages are doing wonderful things to improve their communities, and to make life better for their neighbors and friends. Whether you're in Center City, the Jersey Shore, Wilmington, or the Poconos, 6abc Action News is committed to showcasing all these good works and wants you to be proud. Be Philly Proud!



Metro, Philadelphia's #1 newspaper, is proud to partner with Walnut Street Theatre, now in its 210th season, in supporting Philadelphia's artists and promoting art education in the local communities. Pick up Metro every Thursday for our Going Out section or read it online at metro.us.



NATIONAL ALLIANCE
for MUSICAL THEATRE

The mission of the Walnut Street Theatre Company is to sustain the tradition of professional theatre and contribute to its future viability and vitality. It does so through the production and presentation of professional theatre; the encouragement, training and development of artists; the development of diverse audiences; and the preservation and chronicling of its theatre building, a National Historic Landmark.



Walnut Street Theatre is a member of the Greater Philadelphia Cultural Alliance, Citizens for the Arts in Pennsylvania, the National Alliance for Musical Theatre, the League of Historic American Theatres and the Greater Philadelphia Chamber of Commerce.



Walnut Street Theatre receives support through a grant from the Pennsylvania Council on the Arts, a state agency funded by the Commonwealth of Pennsylvania.



Independence
STARTS HERE!

Walnut Street Theatre acknowledges with appreciation Bryce's Catering Company (Wynnewood, PA) for their elegant catering of theatre events.

Accessibility Equipment, Training and Marketing provided by Independence Starts Here, the statewide cultural accessibility program of VSA PA/Amaryllis Theatre Co., jointly led in different regions in PA by cultural partners in that region. In Greater Philadelphia, Independence Starts Here is jointly led by Art-Reach, Inc.



Support for Walnut Street Theatre's general operations provided in part by the Philadelphia Cultural Fund.

American Airlines is the official airline of Walnut Street Theatre.



PLAYBILLVAULT.COM

WALNUT STREET THEATRE 13

THANKS TO OUR SUPPORTERS

Walnut Street Theatre wishes to express gratitude to the following individuals, corporations, foundations and government agencies for their annual contributions to America's Oldest Theatre.

FORREST SOCIETY (\$25,000+)

Frank & Ramona Gwynn
Bernard Havard &
Judy Capuzzi Havard*

The Hellendall Family Foundation
Ken & Nancy Hellendall

Louis and Bessie Stein Foundation
Fund #2
PECO
Pennsylvania Council on the Arts
PNC Arts Alive
Scott & Sharon Rankin

The Shubert Foundation
Stradley Ronon Stevens & Young LLP
Syde Hurdus Foundation
The Walt Disney Company
William Penn Foundation

BOOTH SOCIETY (\$10,000+)

American Airlines
The Peter and Audrey Denton Fund
Jeff & Janie Ferro
Matt Garfield
The Hamilton Family Foundation
Herman Goldner Company

Horace W. Goldsmith Foundation
Independence Foundation
Jane James
Philip & Margaret Masters -
Arthur Murray International, Inc.
Philadelphia Cultural Fund

Philadelphia Insurance Companies
The Rebecca Capuzzi Memorial Fund
Universal Health Services
Vulcan Spring & Mfg. Co.

BARRYMORE SOCIETY (\$5,000+)

The ARAMARK Charitable Fund
Dolores & Ronald Bowlan
Drs. James Byers & Stephanie Chuipek
John & Mary Conlon
Connelly Foundation
Marian & Ken Disken
Gerald & Helga Finsen

The Louis W. Fryman Scholarship Fund
Bob & Louise Harman*
Mr. & Mrs. Francis J. Mirabello
Mr. & Mrs. Edward J. Mitchell
Richard A. Mitchell*
Maureen E. Molloy
The Mutual Fire Foundation

Pennsylvania Lumbermens
Mutual Insurance Company
Jennifer Toll Schulman
James D. Scully, Jr. & Marlene Stoczko
Walter & Gretel Hellendall
Education Fund

CUSHMAN SOCIETY (\$2,500+)

Anonymous (4)
Abele Family Foundation
Dan & Reeva Benau
David S. Blum & Mark B. Woodland
Bradford White Corporation
Bryn Mawr Trust Company
Bob & Cheryl Carfagno
Commonwealth Land Title
Insurance Company
Covenant Bank
Jack & Ellie Garfinkle
The Hassel Foundation
Jerry & Kate Hathaway

Charles W. Horn, III &
Patrick M. Rumaker
R. Todd Ireland
Sonya & Joseph Kelly
Ken & Elaine Kirby
LMC-Plasticsource
Dr. Stephen E. Lore
Louis N. Cassett Foundation
Christopher & Michele Mahle
Edward & Roberta Martin
Mr. & Mrs. Arthur Mattia
Chase & Susan McDaniel
Jack Miller Family Foundation
Robert Peter Miller

David & Lyn Montgomery
Ann & Lanny Patten
The Pennsylvania Trust Company
Bud & Betty Shapiro
Roger & Kathi Smith
Rowland & Elaine Smith
Stateside Vodka
TD Charitable Foundation
Theatre Forward
USLI
Joseph & Eileen Wawrzynek

JEFFERSON SOCIETY (\$1,500+)

Anonymous (3)	Mr. & Mrs. John D. Graham	Steven & Deborah Mongiardo	Ronald, Leslie & Amanda Shur
Marylee & Stuart Alperin	Patrick & Shelly Guise	Drs. Jonni & Roger Moore	Harry E. Springfield, Jr.
Ash Family Foundation	Kathryn S. Hayes &	Mr. & Mrs. Stuart Ockman	Dr. & Mrs. Frank Stearns
Bruce C. Belzak	Victor J. Tortorelli	Robin Palmieri	Jesse W. & B. Lois Stuart
Ms. Jean Berg	Mr. & Mrs. Robert and	Rev. Lucy Pierre	Mr. & Mrs. Donald C. Tantum
Gene & Joann Bissell	Elizabeth Hulitt	John & Michelle Prevoznik	Mr. & Mrs. Richard T. Taylor
Joseph & Suzanne Calabro	Clara Huntzinger	Linda Ralls	Mr. & Mrs. Jim Tholey
George M. Chamberlain	Karen & Joseph Israel	Mr. & Mrs. Nicholas W. Martino	Frank & Fran Urso
Sandy & Joanne D'Orazio	Ron & Sandy Johnson	Mr. & Mrs. Vincent Redes and	Carolyn Bunny Welsh &
Susan Dornstein & Gary Deutsch	Ginny & Gordon Lapinski	Morgan	Harry McKinney
Rhoda & Louis Fryman*	Rosalie & Ben Lipitz	Joyce Seewald Sanda	Alan Wender
Larry & Nancy George	Paul J. Marcotte &	Ellen Schwartz and Jeremy Siegel	Rachel & Brian Wilner
John & Elizabeth Gontarz	Karen A. Brown	Kathy & Don Shannon	Forrest & Kathy Worrell

KEMBLE SOCIETY (\$1,000+)

Anonymous (3)	Dr. Charles & Mrs. Brenda Driben	Paul & Beth Koob	Steven & Lynne Spencer
The Ani Fioridimondo Scholarship Fund	Mr. & Mrs. Timothy Duffy	Ms. Mary H. Ladd	Sherryl & Ted Strand
Dr. Sucha & Mr. Michael Asbell	Robert J. Eberle Jr.	Erik Lang	Dolores Sudhop
Sydney Beckett	Paul & Janet Engstrom	Frank & Darlene Lordi	Scott & Jennifer Sullivan
Sidney & David Biddle	Gina Evangelista	Mr. & Mrs. Marchiali	Mark D. Sylvester*
Thorir & Erna Bjornsson	Kalman & Suzan Fine	The Maser Family	Dr. Josephine Templeton
Mark D. Braverman	Rose Anne & Louis A. Fiore	Andrew Masterman	Marlene & Joe Testa
George & Nancy Brodie	Anthony & Laura Fiorenza	Mr. Patrick McGinley	Charles & Clarice Thum
Tracy A. Broomall	Melvyn Freid	Jeanette & Richard Merion	Ellen Tobie & Larry Gilberti
William & Joann Butler	Rick and Julie Frost	Jane & Martin Millner	Meryl Udell & Kelci
Joseph Candelore & Angelina	Robert Fuller	Evalind Minor	Peter & Viviana Van Deerlin
Wendy & Joseph Casillo	Jane Galli	Ruth & Jerry Mooney	Todd & Barbara Vanett
Anastasia Chrysofos	Marie H. Garfield	Stephen Masley & Lisa Rayder	Mr. & Mrs. Mickey Velez
Helene Ehrlich-Cohen &	James & Wendy Gerber	Catherine Mularz	Dr. & Mrs. Anthony W. Villare
Marc Cohen	Dr. Priya Gor & Dr. Darius Sholevar	Justin O'Malley	Richard and Margaret Volpe
Virginia R. Cragg	Mr. & Mrs. Roger Hallowell, Jr.	Jack and Hermene Potts	Mr. & Mrs. Michael B. Walsh
Mr. & Mrs. Alan Craig	Carolyn & Donald Hann	Juanita & Pete Ricchiuti	Marion M. Walter
Kimberly & Walter Cwietniewicz	Jim & Linda Hartz	Ann Robinson	Mr. & Mrs. Paris Washington
Drs. Michael B. Dabrow &	Linda Harvey	Drs. Brad and Elizabeth Robinson	Kathryn West
Manette K. Fine	James & Claudia Haviland	Dr. Renee H. Rollin	Timothy & Leora Wile
Sandy & Steve Daukaus	James Herman, Esq. &	Mr. and Mrs. Robert K. Roush, Jr.	Victoria Werth &
Mary Dauphinais &	Brenda Lee Eutsler, Esq.	Daniel & Wendi Ruddy	Kevin Jon Williams
Thomas Kenney	Bill & Clare Higgins	Mary & Paul Rutter	Debbie & Ron Wolf
Vic & Eva Dawson	Jerry Hook & Jacqueline Smith	Stephen M. Sader	Faith & David Wolford
Mr. & Mrs. William P. and	Dr. & Mrs. Thomas A. Howley, Jr.	Arthur & Marie Salvagno	Ruth Anne & David Woolsey
Susan P. Degler	Mr. Lee H. Hudson	Keith Schneck	Richard & Diane Dalto Woosnam
Nancy L. Dinsmore	Julie & Jerry Jacobs	Adam & Christine Sigal	
Joseph D'Orazio	James T. Johnston, Sr.	William & Mary Simpson	
Andrew, Amos, A. J. & K. Driban	Thomas & Angela Kay	Jon C. & Karen P. Sirlin	
	Janet & Lew Klein	William R. Snell, Esq.	

PRODUCING ANGELS (\$500+)

<p>Drs. Ronald & Marcia Abraham Mary Jane Breen Jim & Mary Brown Michael J. & Alice L. Brown Bob & Treva Burger Yvonne & Bruce Burgess C & M Noveltyes, Joseph J. Morgan Elizabeth F. Cosmas Mr. & Mrs. Carl J. Cencetti, Sr. Harvey & Jan Chanin John T. Chumbley & Carol Chumbley Barbara and Gerald Claffie Dr. Todd & Wendi Cohen Daniel Comer Chris & Sara Console Mr. & Mrs. Robert H. Cook David M. & Susan Y. Devor Sam Driban & Marilyn Neuhauser Drs. Bruce & Toby Eisenstein The Fox Foundation in memory of Rex & Carol Fox Kate Foyle Gerald & Jean Frank Julayne Frost Susan M. Garber Beatriz Garcia Mr. Robert Garrett Louisa Garrido</p>	<p>Al & Luci Giagnacova Valerie & David Gladfelder The William Goldman Foundation Gail & Samuel Goldstein Mr. & Mrs. Robert Goodman Ron & Sandy Gould Dr. Marcia and Dr. Alexander Grande, III Michael & Dawn Grasso David R. Griscom & Berminna Solem Sandra & Joel Haness David Hann Jason Haugh Lynda & David Herendeen Alicia & John Hlywak Frank Houston and Sue Locke Bruce & Alice Hudson Charles Intenzo* Kevin & Fran Jardine Dr. & Mrs. Gerard Johnson Tom & Joann Jordan Marcia & Ned Kaplin Ginny & Len Karabell Kathryn Keithley & Jill Ditton George Kelley Donna Kelly Paul Kelly, III & Kate M. Harper Walter Kissel</p>	<p>Gerhart & Anne Klein Charitable Fund Sherrie & Nelson Klein George F. Koch, Jr. & Santo A. DiDonato Holly Krause & Family Sudhir Kumar & Clio Mallin Joan & Marc S. Lapayowker, MD Christine & Oscar Laskin John & Daniela Leone Stephen Levin Carol & John Little Maureen Lord-Benson Boyd & Judith Mackleer Alexander & Jennifer Macleod Kenneth Mallin Mrs. Tilda Mann Lana & Linda Marcinek Mr. Robert Marcinkowski Julian Maressa Ilene Wolf McCaffrey Ellen McKenna Laura & Marc McKenna Rick & Daria Meehl Miriam & Stan Meltzer Ms. Kyle Anne Midkiff Don & Sue Miller Frances Miller Dr. James K. Miller Joseph E. Miller, Jr. Family Rick Moog & Pat Martin Gerry & Brenda Mullane</p>	<p>Christine Mundt Lisa & Tom Murphy Thomas P. Otade, MD Deborah Ott & Angel Macasieb Mrs. Joan Palitz L. Stephan & Rochelle Perchick Douglas Perham Edmund & Abbe Pescatore Mr. & Mrs. Steven B. Pinsky Donald & Dorothy Praiss Lindsay Ptaszenski Mr. & Mrs. Thaddeus Raczkowski Bruce & Cindy Rangnow Dr. & Mrs. Christopher Rapuano Mr. & Mrs. Daniel Rice Ann Marie & Iv Richter Christopher Ritchie Paul V. Robinson Mrs. Edwin P. Rome Charles & Dr. Mindy Goldberg Rose Anthony J. & Renee Scamuffa Mr. & Mrs. Irving Scolnick Ann Seiberlich David & Joanne Shaffer Anand Shah Rob & Eda Shannon Mr. & Mrs. C. A. Sherman Mr. Roy Shubert Marsha M. Silberstein, M.D.</p>	<p>Rita A. Silvestri Debbie & Dave Smeltzer Lisa Smukler Eric Spare Bill Spencer Mary Ann & Bill Stanczak Mrs. Allie F. B. Stanford Dave & Chris Stanton Mr. & Mrs. Sylvan Taub Peggy & David Stedman Mr. & Mrs. Domenic Stellato Jonathan Summers Mr. & Mrs. Peter Tallman Robert & Cheryl Traub John & Barb Ungerman Sarah & John VanBuren Donna Visioli and Cesar Silebi Thomas Wadas Margot Waitz & Gordon Manin Beau & Valerie Walton Brian & Jessica Watterson Raymond & Elizabeth Weddington Kurt & Terry Williams David & Kathleen Wojcik Gina T. Zegel Mitch & Randi Zimmer</p>
---	--	---	--	--

BENEFACTORS (\$250+)

<p>Anonymous (8) Jerry Abelson and June Idzal Mr. & Mrs. James Ahlum Phillip Altomare Wes Andersen M. Faith Angell & Kenneth Carobus Kay Aspell Arthur & KC Baldadian Kimberly & Kara Barker Mr. & Mrs. Charles Barnard Lynda Barnes Neal and Sandy Barnett Dr. & Mrs. Kenneth J. Basalik In memory of Anne Jones Lori Berk The Biles Family Barbara & Brian Binney Ken & Marie A. Bishop Kerry Bluestein Bolinski Consulting Janet, Don, & Jacob Boris Joseph Botero Lisa Boyell Theresa Brennan David & Janet Breskman</p>	<p>Mr. & Mrs. Thomas E. Brightman Broadview Kitchen & Bath Lee Brooks Carol E. Brown Mr. Anthony Bruno Tom Brzozowski Marilyn R. Burgin Mr. & Mrs. Christopher Burks Mr. & Mrs. Bransby and Margaret Bushey Mayor & Mrs. Edward Campbell Dr. and Mrs. David Capuzzi Mr. and Mrs. David Carey Ralph Carey Fred Carpentier and Carol Bozumato Edward & Dorothy Carter Cascade Water Services - Hal Roth Ms. Nancy L. Cervino Clay & Kristie Chandler James Chapman Dale & Nancy Choate Mr. & Mrs. Peter and Jane Cohen Robert and Deborah Cohen</p>	<p>Allan & Rose Coletta Mr. & Mrs. Frank Cona, Sr. Jeremi Conaway Ed & Joelle Connors Mr. George Cooper John & Marjorie Corbett Frieda & Marvin Cotler Malachi & Olivia Cunningham George Daly Frank DeMonaco Gail W. Dillon Susan DiPaolo David Dondero Beverly Downie Merle Edmunds* Dr. Beverly Emanuel Arthur & Eileen Etchells William Evans Ms. Elizabeth Ewing Anne M. Farrington Maria A. Feeley In memory of Mary Blair Fields Alexis Gerard Finger Bill Flannery Automotive Kathleen Flannery Joel & Carol Fleisher Ernie & Misty Flurry</p>	<p>Mr. & Mrs. C. Donald & Mary Forney Drs. Barbara & Len Frank Margaret Fretz & Gerald Heckmann Stephen & Marian Galer William & Alice Garvey Commercial Gaskets Mr. and Mrs. Barry H. Genkin Chris & Margie Giles* Arlene Goldberg George & Jackie Goldstone in memory of Dina Michelle Goldstone Mrs. Edward J. Goodman Fred & Sue Gordon Marshall & Maryellen Gorodetzer Mr. & Mrs. Joseph & Theresa Grabowski Rae Greenberg Jessica Greenfield in memory of Helen M. Powers Eleanor Gribok Mr. & Mrs. Benjamin Griffith Steve Griffith Ina & Earl Gross</p>	<p>Judith Guise Joseph & Barbara Gura Christopher Hamilton & Marguerite Hulett Mr. & Mrs. John Hammer Jennifer Hartey Peter & Donna Hasselmo Mr. George Hathaway Frances Heffner Jack & Marilyn Hines Mr. & Mrs. John R. Hogan Tom & Paula Hollencamp Louise Hoover Ms. Lois Hopkins Sandra Horwitz Alice Houston Jim & Carol Hunsicker Doris Hurst Mr. Kenneth Huth Kathy & Dave Hychalk Tom & Jo Hyden Gwen Iller Dr. & Mrs. Geza Incze in memory of Robert I. Incze Ginny and Frank Jackson Dr. & Mrs. Stanley R. Jacobs Elton & Wendy-Anne Johnson</p>
--	---	--	---	--

BENEFACTORS, continued

Eleanor Jordan*
 Homi & Shireen Kapadia
 Dennis Keleshian &
 Chris Dostal
 John & Barbara Kelly
 Ms. Norma Kelly
 Paul Keuerleber
 Alan and Henrietta Kiel
 Ms. Lyn Kinkade
 Wayne Klotzbach
 Charles & Mary Ellen Knothe
 Dr. & Mrs. Sylvester Kohut, Jr.
 Joseph & Kathryn Kraher
 Talbot & Charlotte Kramer
 Matthew and Dianne Krasney
 Mr. & Mrs. Douglas Kriebel
 Harry & Stacy LaBelle
 Anita Lamond
 Karen & Robert Landman
 Charles & Lucinda Landreth
 The Lange Family
 Andrew & Julia Leader-Smith
 Nelvin Lee & Stephen Walker
 Harry & Carol Leopold
 Suzanne & Stuart Levy
 Craig & Stephanie Lewis
 Mr. & Mrs. Ted Lotz
 Mr. and Mrs. James Love
 Patricia Lukaszow
 James Lynch
 Marie & Bill Magee
 Joe & Olena Maloney
 Dr. & Mrs. Harry E. Manser, Jr.

Rose M. Marinaro
 Laura Markowitz &
 Steven Miller
 Wayne Marquardt &
 Chris Tadeo
 Debbie & Elliott Maser
 Jacquelyn Massey*
 Joseph & Rosemarie Matranga
 Mr. & Mrs. Steve Mazda
 Regenia McAden*
 Beth McCarthy
 Mr. & Mrs. J. McCarthy
 Harry and Susan McClough
 Mr. and Mrs. Michael McCurdy
 Nora McErlan Hopson &
 Ken Cenci
 Sandy McGee
 Pat & Harold McIlwain
 Frank & Carolyn McIntosh
 Ms. Elynn McMullin
 Dr. & Mrs. James Meadowcroft
 Rev. & Mrs. Raymond and
 Deborah Merriweather
 Jim & Mary Ann Miles
 Arthur P. & Marjorie L. Miller
 Frances Miller
 John & Susan Miller
 Patrick Moeller
 Linda Moore
 Patricia M. Moore
 Sean Morrissey
 Hermann & Barbara Moser

Mr. & Mrs. Richard &
 Bonnie Moses
 Mr. Stephen Negro
 Mark Nimchuk
 Suzanne V. Norris, Realtor
 Mr. & Mrs. Thomas O'Reilly
 Frank & Anne Palopoli
 Dr. & Mrs. Lawrence Charles
 Parish
 Susan Peck
 Dr. & Mrs. Bernard & Joy Pekala
 Mr. David B. Penske
 Linda Penza
 Dr. & Mrs. Jerome R. Pietras
 Mr & Mrs. Martin Pley
 Mrs. Nancy Pliskin
 Patricia H. Polinsky
 Barbara Ponzek
 Mrs. Judith Porter-LoBue
 Mary Prychka
 Thomas Quinn &
 Susan Nicodemus Quinn
 Patricia A. Rice
 Dr. and Mrs. Melvyn Richter
 Carl and Donna Robinson
 Bob Roehr & Mary K.
 Mr. & Mrs. Robert Rosenbaum
 Sandy Rosenberg
 Leonard M. Rosenfeld
 Robert and Sara Sabota
 John & Lauren Sacks,
 Property Management
 Redefined

Anna & David Saul
 Mr. Gerald Schatz
 Ms. Donna Schleper
 C. H. Schwertmer
 Carol & Gregory Scott
 Gil & Michelle Segal
 Donald & Lela Seidel
 John & Mary Grace Senatore
 David and Claire Service
 Carol & Douglas Sherwood
 Celia Shevlin
 Maureen Shrader
 Dick & Maria Shroy
 Robert Shumelman
 Nancy & Alan D. Silverman
 Ronald M. Silverstein
 Aaron Simmons
 Mary Ann G. Smith*
 James L. Smith
 Maryrose Smochek
 John and Christine Sommer
 Dr. & Mrs. Jason Sorgini
 Robert & Nancy Spalding
 Drs. Arthur & Sherry Starr
 Mr. & Mrs. Donald Staudt, Sr.
 Jerry Stein
 Alice Stoll
 David Stickley
 Dr. & Mrs. Richard Streeter
 Mr. & Mrs. Daryl and
 Linda Stull II
 Steven and Nancy Talis
 Joeshp Teji

John & Rochelle Thompson
 Wayne Tobolski
 Gale Trent*
 Susan & Robert Tribit
 Anne Umbrecht
 Warren Uzialko
 Kathy Valla
 Joseph & Sandra Vasto
 Irene Vouladas
 Dr. Valaida S. Walker
 Jeff Walsh &
 Mark Klingensmith
 Mr. & Mrs. Robert and
 Lucinda Weiner
 Elizabeth Weinreb
 Wayne & Paula Davis West
 Mr. & Mrs. Howard White
 Russ and Carol Whitman
 Ms. Ann J. Williams
 Caron & Elizabeth Williams
 Gwendolyn Williams*
 David Wilson & Elizabeth Lexa
 Kathy Wingate
 Eugene Winner
 David & Karen Winning
 Marian M. Wolfert
 Judith & Fred Young
 Dr. Stephanie Zarus
 Susan & Kevin B. Zebrowski
 Gloria Zingaro &
 Todd and Nicholas Welch
 Robert Biron & Karen Zur

IN KIND

Courier Post
 METRO Philadelphia

MORE-FM
 6ABC

Philly Weekly
 REAL106.1

WRTI
 Square One

Donors listings as of February 5, 2019

Walnut Street Theatre gratefully acknowledges additional supporters of the annual Angels Campaign online at WalnutStreetTheatre.org/support/ways-to-give.

*Includes a donation made to The Rebecca Capuzzi Memorial Fund, The Ani Fiordimondo Scholarship Fund, The Len Karabell Memorial Fund or The Pamela Wood Fund. For more information on ways you can support the arts and educational programs at Walnut Street Theatre please contact the Office of Philanthropy at (215) 574-3580.

Save the Date!

2019 Gala Concert — May 4, 2019

Mark your calendar to join us for a night of music and celebration,
 benefiting the Walnut's education programs!

For more information, call 215-574-3580

PLAYBILLVAULT.COM

WALNUT STREET THEATRE 17