

# PLAYBILL



WALNUT STREET THEATRE

PHILADELPHIA, PENNSYLVANIA

NEIL SIMON'S  
**LAUGHTER**  
ON THE 23<sup>RD</sup>  
**FLOOR**





FOUNDED 1809

AMERICA'S OLDEST THEATRE – PHILADELPHIA'S MOST POPULAR THEATRE COMPANY

# WALNUT STREET THEATRE

825 WALNUT STREET • PHILADELPHIA PA 19107

Dear Theatregoer,

Happy New Year! We're delighted to begin the New Year with laughter at every turn. The past 12 months have been eventful at the Walnut, and we look forward to even more in 2017 at America's Oldest Theatre beginning with tonight's performance. *Laughter on the 23rd Floor* has been called Neil Simon's funniest play, and I couldn't agree more. No writer makes me laugh harder than Simon; I hope you enjoy the show as much as I do.

Next on our Mainstage is Oscar Wilde's *The Importance of Being Earnest*. This classic comedy is filled with Wilde's wit and style as the story unfolds artful duplicity, mistaken identities and secret affairs. This show continues to charm audiences around the world and I'm thrilled to produce it right here on our stage. We have a wonderful cast, including Mary Martello as Lady Bracknell. You won't want to miss it!

Upstairs in our Independence Studio on 3 we have another of Simon's hilarious plays, *Last of the Red Hot Lovers*. This is our seventh Walnut production that will set out on a national tour following performances in our theatre. You can see it here before it hits the road to delight audiences in 12 states across the country. The Studio 3 season will continue with *The Gift*, a story of loyal friendship that made its debut at the Walnut in 1998. The season ends with Broadway's loving tribute to an all-American master of song, Jerry Herman. We'll have music from *Hello, Dolly!*; *Mame*; *Mack and Mabel* and *La Cage Aux Folles* as we celebrate the Tony, Grammy, Olivier and Drama Desk Award-winning composer. I invite you to join us just two floors up for these intimate stories in an intimate space.

We're delighted to have just announced our 209th anniversary season including Stephen Sondheim's comical Broadway musical *A Funny Thing Happened on the Way to the Forum*; Broadway's dream-come-true musical *Annie*; the 2016 Tony Award-winning Best Play about a Pennsylvania family's Thanksgiving dinner, *The Humans*; and the rip-roaring backstage comedy, *Noises Off*. Next season ends a spectacular musical that will have you dancing in the aisles, *Mamma Mia!*

For now, sit back and get ready to laugh with *Laughter on the 23rd Floor*. We love having you at the theatre and look forward to seeing you again soon!

Sincerely,

Bernard Havard, Producing Artistic Director



Photo: Mark Garvin

[PLAYBILLVAULT.COM](http://PLAYBILLVAULT.COM)

WALNUT STREET THEATRE 3



FOUNDED 1809

AMERICA'S OLDEST THEATRE – PHILADELPHIA'S MOST POPULAR THEATRE COMPANY

# WALNUT STREET THEATRE

825 WALNUT STREET • PHILADELPHIA PA 19107

**BERNARD HAVARD**  
Producing Artistic Director

JANUARY 17 – MARCH 5, 2017

## LAUGHTER ON THE 23RD FLOOR

By **NEIL SIMON**

Scenic Design  
**DAVID P. GORDON**

Costume Design  
**MARK MARIANI**

Lighting Design  
**J. DOMINIC CHACON**

Sound Design  
**CHRISTOPHER COLUCCI**

Production Manager  
**JOEL MARKUS**

Stage Managers  
**ANGELA CUCCO**  
**LORI AGHAZARIAN**

Directed by  
**FRANK FERRANTE**

Sponsored by

*Laughter on the 23rd Floor*  
Community Partner



**MARK D. SYLVESTER**  
Managing Director

Director of  
Education  
**THOMAS P. QUINN**

Director of Marketing  
and Public Relations  
**RALPH WEEKS**

---

---

# CAST

(in order of appearance)

Lucas ..... DAVY RAPHAELY\*  
Milt ..... STEVE PERLMUTTER\*  
Val ..... TONY FREEMAN\*  
Brian ..... ANTHONY LAWTON\*  
Kenny ..... JESSE BERNSTEIN\*  
Carol ..... LEAH WALTON\*  
Max Prince ..... FRANK FERRANTE\*  
Helen ..... ELLIE MOONEY\*  
Ira ..... SCOTT GREER\*

## UNDERSTUDIES

DOUG CASHELL (Kenny), ALEXA CEPEDA (Helen), JOSLYNN CORTES (Carol, 2nd u/s),  
BRANDON TYLER HOLCOMB (Lucas), THOMAS-ROBERT IRVIN (Max Prince),  
JENNA KUERZI (Carol), WILLIAM R. McHATTIE (Brian), DAVID NIKOLAS (Milt),  
WILL POOST (Val), ERIC RUPP (Ira)

**Assistant Director:** Noah Herman

\* Denotes membership in Actors' Equity Association,  
the professional union of Actors and Stage Managers in the United States.

Special thanks to Karen Caesar for her support.

Cover photo: Frank Ferrante

---

## SCENE:

An office on the 23rd floor of a building on 57th Street, New York City

## ACT I:

March, 1953

*THERE WILL BE ONE 20-MINUTE INTERMISSION.*

## ACT II:

Scene 1: Seven months later

Scene 2: Christmas Eve

---

*Laughter on the 23rd Floor* (Neil Simon) is presented by special arrangement  
with SAMUEL FRENCH, INC.

The video and/or audio recording of this performance  
by any means whatsoever is strictly prohibited.

---

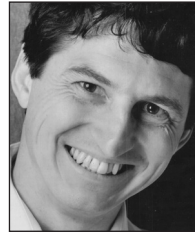
# CAST



**Jesse Bernstein**



**Frank Ferrante**



**Tony Freeman**



**Scott Greer**



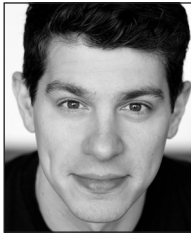
**Anthony Lawton**



**Ellie Mooney**



**Steve Perlmutter**



**Davy Raphaely**



**Leah Walton**

## WHO'S WHO

**JESSE BERNSTEIN** (Kenny) Walnut: Eugene in *Brighton Beach Memoirs*, *Biloxi Blues* and *Broadway Bound*; director, *Shipwrecked!* Regional: *Handle With Care* (Montgomery Theater), *Diary of Anne Frank* (Rubicon Theatre), *Enter Laughing* (Berkshire Theatre) and more. TV: *Law and Order*, *Veronica Mars*, *Days of Our Lives*. Jesse is also a writer and teaching artist.

**FRANK FERRANTE** (Director/Max Prince) debuted Off-Broadway at 23 in the title role in *Groucho: A Life in Revue* followed by a West End run. He earned New York's Theatre World Award, Outer Critics Circle nomination and London's Laurence Olivier nomination. On the Walnut Mainstage, Frank directed (and performed) 1997's *Laughter on the 23rd Floor*, *Brighton Beach Memoirs*, *Biloxi Blues*, *Broadway Bound*, *The Sunshine Boys*, *Lost in Yonkers* and *Groucho*. At Walnut's Independence Studio, Frank played the solo role in *By George* (about playwright/director George S. Kaufman) and directed the world premiere of *Old Wicked Songs* - a subsequent Pulitzer finalist. Since 2001, Frank performs his comic creation "The Caesar" in cirque/cabaret venues worldwide. On television, Frank played a talking mime in Emmy-winning *Childrens Hospital* and is heard on animated series *Garfield* and *SpongeBob SquarePants*.

**TONY FREEMAN** (Val) Broadway: *The Lion King*. Walnut Street: *Laughter on the 23rd Floor* (1997), *The Goodbye Girl* (Barrymore Nomination), *Grand Hotel* (Barrymore Nomination), *Triumph of Love*, *Lost in Yonkers*. Arden Theatre: *Merrily We Roll Along* (Barrymore Award), *Into the Woods* (The Baker), *Winesburg, Ohio*. *Law and Order* and *Law and Order, SVU*.

**SCOTT GREER** (Ira) Favorites at the Walnut: *Laughter...* ('97!), *Buddy*, *Of Mice and Men*, *Brighton Beach Memoirs*. NY: The Pearl Theatre. Regional: Milwaukee Rep., Arizona Theatre, Actors Theatre of Louisville, 5 Barrymore Awards. 2014 "Best of Philly," Philadelphia Magazine. Thanks to Frank, Mark and Bernard. Love to Jen and Lily.

**ANTHONY LAWTON** (Brian) has acted in Philadelphia for 25 years. Favorite roles include George in *Of Mice and Men* (Walnut Street) and Friar Laurence in *Romeo and Juliet* (Arden).

He produces solo versions of C.S. Lewis' *The Great Divorce* and *The Screwtape Letters*. For info, go to [AnthonyLawtonActor.com](http://AnthonyLawtonActor.com).

**ELLIE MOONEY** (Helen) WST Highlights: *Wizard of Oz* (Wicked Witch), *Harvey* (Myrtle Mae), *Sister Act* (Mary Martin-of-Tours), *A Christmas Story* (Miss Shields), *Mary Poppins* (Mrs. Corry), *Amadeus* (Constanze). Love and gratitude to Walnut Street Theatre and Basile family. Up next at WST: *The Importance of Being Earnest* (Miss Prism). [elliemooney.com](http://elliemooney.com)

**STEVE PERLMUTTER** (Milt) is thrilled to be returning to WST where he previously appeared in *Lost in Yonkers* and *Laughter on the 23rd Floor*. Other credits include: *Dinner with Friends*, *Luv*, *The Sisters Rosensweig*, *Picasso at the Lapin Agile*, *The Show-Off* and numerous radio and television commercials. Thanks, Frank and Bernard! Love to Quinn, Amelia.

**DAVY RAPHAELY** (Lucas) is proud to be back at the Walnut. (Last season, *Peter and the Starcatcher*). Some other credits include: *4,000 Miles* (PTC); *Other Desert Cities* (Hudson Stage, NY); *All My Sons* (Weston Playhouse, VT); *Bad Jews*, *Proof* (Walnut); *History of Invulnerability* (Theatre J, DC); *The Bomb-itty of Errors* (11th Hour). [davyraphaely.com](http://davyraphaely.com). Love to Allison.

**LEAH WALTON** (Carol) Off-Broadway: *Ars Nova* with Berzerker Residents. Philadelphia: Walnut Street Theatre, Arden, InterAct, Lantern, Pig Iron, Montgomery Theatre, 11<sup>th</sup> Hour, Azuka, EgoPo, People's Light. Barrymore Award 2015: Best Supporting Actress in a Musical. Training: National Theatre Institute, Moscow Art Theatre, Michael Chekhov Association, MFA Temple University. [leah-walton.com](http://leah-walton.com)

**NEIL SIMON** (Playwright) American playwright and screenwriter Neil Simon is widely regarded as one of the most successful, prolific and performed playwrights in the world. He has been represented on Broadway by shows including *Come Blow Your Horn*; *Little Me*; *Barefoot in the Park*; *The Odd Couple*; *Sweet Charity*; *The Star-Spangled Girl*; *Plaza Suite*; *Promises, Promises*; *The Gingerbread Lady*; *The Prisoner of Second Avenue*; *The Sunshine Boys*; *The Good Doctor*; *God's Favorite*; *California Suite*; *Chapter Two*; *They're Playing*

---

---

## WHO'S WHO

*Our Song; I Ought to Be in Pictures; Fools; Brighton Beach Memoirs; Biloxi Blues; The Odd Couple* (female version); *Broadway Bound; Rumors; Lost in Yonkers; Jake's Women; The Goodbye Girl; Last of the Red Hot Lovers; Proposals; The Dinner Party; and 45 Seconds from Broadway*. Off-Broadway: *London Suite* and *Hotel Suite*. Additionally, Simon has written books, films and series, teleplays and motion pictures for television. He has received more Academy and Tony nominations than any other writer. Additionally, he has been awarded the Pulitzer Prize for *Lost In Yonkers*, Emmy Awards for *The Sid Caesar Show* and *The Phil Silvers Show*, Tony Awards for *The Odd Couple, Biloxi Blues, Lost In Yonkers* and a special Tony Award For Overall Contribution To The Theatre. In 1999, the Walnut produced the world premiere of *Hotel Suite*.

**DAVID P. GORDON** (Scenic Design) WST: *Brighton Beach Trilogy*. New York: Public Theater, TFANA, CSC, EST, Women's Project, Pearl. Regional: Arden, Wilma, PTC, People's Light, Hartford Stage, Old Globe, Long Wharf, Williamstown, Goodspeed, Huntington,

McCarter, Westport, Williamstown, Chicago Shakespeare, Kennedy Center. Opera: L.A. Opera, Lincoln Center, Juilliard Opera, Seattle Opera, Florida Grand Opera, Opera Theatre of St. Louis, Berkshire Opera, Sarasota Opera. Awards: Five Barrymore Awards, the 2003 Elliot Norton Award. Professor of Set Design at Rutgers University's Mason Gross School of the Arts.

**MARK MARIANI** (Costume Design) Most recently: WST: *Last of the Red Hot Lovers, Always... Patsy Cline, Harvey, Private Lives*. Lantern Theater Co: *Taming of the Shrew*. Philadelphia Theater Co: *Disgraced*. Baystreet Theater, NY: *Mystery Of Irma Vep*. The Broad Theater, L.A: *Freud's Last Session*. Off-Broadway: Marjorie Dean Theater and New World Stages, *Freud's Last Session*. BSC (*Brel in the Berkshires* and *See Rock City & Other Destinations*); UAE: (*Ambassador Satch*). Proud to be a three-time Barrymore nominee!

**J. DOMINIC CHACON** (Lighting Design) is very happy to be back at the Walnut this season! Thanks to the entire Artistic and

---

---

## WHO'S WHO

Production team for everything. A graduate of The University of Iowa and Temple University, he currently teaches at Drexel University and is the Lighting Coordinator at the Lang Performance Arts Center. Favorites: *Peter and the Starcatcher*, *Red, Proof*, *The Rise and Fall of Little Voice* (WST); *Ordinary Days* (11th Hour); *Aladdin* (People's Light); *Dave and Aaron Go to Work* (1812).

**CHRISTOPHER COLUCCI** (Sound Design) is a sound designer, composer and guitarist. Recent work: *When The Rain Stops Falling* (Wilma Theater); *Metamorphoses* (Arden Theatre Company); *Disgraced* (Philadelphia Theater Company); *The Carols* (1812 Productions). This is his 28th show at the Walnut! Christopher has received a 2016 Pew Fellowship in the Arts, 7 Barrymore Awards for Outstanding Original Music and Sound Design. MA, Philosophy; Western Kentucky University. Visit <http://soundcloud.com/cmsound> and [youtube.com/user/cmsound](http://youtube.com/user/cmsound).

**LORI AGHAZARIAN** (Stage Manager) This is Lori's eleventh season here at the Walnut. Prior to joining WST, Lori spent seven seasons as PSM at the Prince Music Theater. Freelance credits include Wilma Theater, Opera Co. of Phila., Pig Iron Theatre Co., 1812 Productions, PTC, and the Eugene O'Neill Theater Center. In addition to stage managing, Lori spent five years as the box office manager for the Philadelphia Live Arts Festival/Philly Fringe. For Daisy.

**ANGELA CUCCO** (Stage Manager) is celebrating her 7th Walnut season by moving to the Mainstage! Prior to this move, she stage managed for six seasons upstairs in the Independence Studio on 3. Other stage management credits include *Mary Poppins* on the Walnut Mainstage, Williamstown Theatre Festival, George Street Playhouse, Vineyard Playhouse, Skyline Theatre Company, New York International Fringe Festival and Philly Fringe. Many thanks to Mom, Dad, Laurie and the WST family. Love forever to David.

**JOEL MARKUS** (Production Manager) This is Joel's sixth season at the Walnut. Other credits: ten seasons at the Indiana Repertory Theatre; four years at Geva Theatre Center in Rochester, NY; five summers at the Weston Playhouse in Vermont; American Players Theatre in Spring



## WHO'S WHO

Green, Wisconsin; and North Shore Music Theatre in Beverly, Massachusetts. He is a graduate of Indiana University and originally from Miami, Florida.

**MARK D. SYLVESTER** (Managing Director) Mark's extensive career has spanned Summer Stock to Broadway as an actor, stage manager, box office treasurer, theatre manager, marketing and public relations director and general manager. This season he is proud to be celebrating his 23<sup>rd</sup> season at the Walnut. After several years working with commercial theatre he has devoted his career to non-profit theatre companies since 1987. To date, Mark has been associated with more than 400 stage productions. An avid collector of musical theatre recordings, his collection contains over 3,000 cast albums from around the world. Widely regarded as a theatrical marketing expert, Mark lectures and consults with organizations internationally. He has served on several boards including seven years with the National Alliance for Musical Theatre where he now holds the honorary position of Board Emeritus and the Advisory Committee of Samuel French, the international play publisher and licensing company. With Bernard Havard he co-authored the book *Walnut Street Theatre*.

Since he joined the Walnut in 1994 it has become the most subscribed theatre company in the world.

**BERNARD HAVARD** (President and Producing Artistic Director) *Vox Populi* (The Voice of the People) was written on the Walnut Playbills in the 1800s. Whenever the Walnut has strayed from a populist program, the theatre has gone bankrupt. When I came here 34 years ago, we had no programs and no audience. Today we enjoy the largest subscription of any theatre in the world. So, my thanks to our loyal audience and a warm welcome to newcomers who enjoy and believe in what we do. I have tremendous admiration for the artists who have dedicated their lives to the theatre and the Walnut, in particular. Our theatre is a non-profit 501-C3 institution and we rely on contributed income to extend our reach into the community. Last season we reached more than 172,000 students in our city schools. We have 30 trustees who give their time, wisdom and contributions to help guide this historical treasure. I came to the Walnut in 1982, and I am as excited now about our future as I was in the beginning. My heartfelt thanks to all who enter this theatre. For my biography, go to About Us on our web site at [WalnutStreetTheatre.org](http://WalnutStreetTheatre.org).

### COMING ATTRACTIONS AT THIS THEATRE!

**Mainstage:** Also coming this season: **Oscar Wilde's *The Importance of Being Earnest***, March 14–April 30, 2017. ***Saturday Night Fever***, May 16–July 16, 2017. For Mainstage subscriptions, call 215-574-3550, ext. 6 (7 days a week, 10am–10pm).

**WST for Kids:** ***Garfield: The Musical with Cattitude***, February 3–February 18, 2017. ***Skippyjon Jones***, March 31–April 22, 2017. ***Junie B. Jones The Musical***, June 2–11, 2017. For tickets, call 215-574-3550, ext. 1 (7 days a week, 10am–10pm).

**Independence Studio on 3:** **Neil Simon's *Last of the Red Hot Lovers***, Now–February 5, 2017. ***The Gift***, February 21–March 19, 2017. ***Jerry's Girls***, April 4–July 2, 2017. For tickets, call 215-574-3550, ext. 1 (7 days a week, 10am–10pm).

**Walnut Street Theatre School:** For more information on the Summer 2017 semester or Camp Walnut, call 215-574-3550, ext. 510.

For information on any of the above items, or to purchase tickets, call the Walnut at 215-574-3550 or visit our website at [WalnutStreetTheatre.org](http://WalnutStreetTheatre.org). Tickets for Walnut Street Theatre productions can also be purchased at Ticketmaster or by calling 800-982-2787.

**WALNUT STREET THEATRE**  
825 Walnut Street, 215-574-3550

**BOARD OF TRUSTEES**

**Chair** ..... **Richard A. Mitchell, Esq.**  
**Immediate Past Chair** ..... **Denise Daher Hodgson**  
**Chairman Emeritus** ..... **Louis W. Fryman, Esq.**  
**Chairman Emeritus** ..... **Matthew Garfield**  
**Chairman Emeritus** ..... **John D. Graham**  
**Vice Chair** ..... **David S. Blum**  
**Vice Chair** ..... **Ramona Gwynn**  
**Vice Chair** ..... **Francis J. Mirabello, Esq.**  
**Vice Chair** ..... **Scott Rankin**  
**Secretary** ..... **Lauren A. Harrington**  
**Treasurer** ..... **Robert L. B. Harman**

Ronald E. Bowlan	David Montgomery
Ira Brown	Cedric Rockamore
Thomas J. Coultas	Edward Satell
Jeffrey Ferro	Keith D. Schneck
Christopher Franklin	Jennifer Toll Schulman
Jack R. Garfinkle, Esq.	Jon C. Sirlin
Albert A. Giagnacova, ChFC, CLU	Ellen Tobie
Gerald T. Hathaway, Esq.	Todd C. Vanett
Bernard Havard	Gloria Watson
Audrey Merves	Richard Woosnam

**ALUMNI TRUSTEES**

Ashok N. Bakhru, Valli Baldassano, Bruce Belzak, Maureen Breakiron-Evans, George M. Chamberlain, Jr., Rebecca R. Clark, Louis J. D'Amrosio, Allan M. Dabrow, Joseph E. Ellis, Sr., Barry Genkin, Donald Glekhan, Bruce Goldberg, Terry Graboyes, Michael Hagy, Joanne Marie Harmelin, Jeremy D. Johnson, Ira L. Kamens, Kenneth E. Kirby, Robert A. Korn, Ann M. Liacouras, Ben Lipitz, Theresa E. Loscalzo, Esq., Craig R. MacQueen, James E. Marks, Kyle Anne Midkiff, George W. Murphy, Ann Marie Richter, Renee H. Rollin, Dolly Beechman Schnall, Martin W. Spector, James M. Tholey, Philip J. Webster

**HONORARY MEMBERS**

Mr. Charles Fuller, Ms. Carole Haas Gravagno, Ms. Anne Jackson, Mr. Neil Simon, Mr. Stephen Sondheim, Hon. Mark Squilla, Ms. Lily Tomlin

**WALNUT STREET THEATRE STAFF**

**ARTISTIC**

**President and Producing**

**Artistic Director** ..... **Bernard Havard**  
Assistant to the Producing Artistic Director/  
Casting ..... Brian Kurtas, CSA  
Casting/Literary Apprentice ..... Rocco Praderio

**ADMINISTRATION**

**Managing Director** ..... **Mark D. Sylvester**  
Assistant to the Managing Director/  
Company Manager ..... Kathryn McCumber  
General Management Apprentice ..... Cara Frisina  
**Controller** ..... **Michael S. Armento**  
Assistant to the Controller ..... Rita Sirianni  
Financial Assistant ..... Loi Dang  
**Audience Services Manager** ..... **Angelia Evans**  
Assistant Audience Services Manager ..... Peter Marshall  
Audience Service Apprentices ..... Talvick Hook,  
Caitlin McCarthy  
**Refreshment Services Manager** ..... **Dan Ludwig**  
**Facilities Manager** ..... **Bruce Myers**  
Assistant to the Facilities Manager ..... Tony Sample  
Environmental Services ..... Purnell Autry, Keisha Bailey,  
Denise Edwards, Victoria Robinson, Garry Savage,  
Bernette Sawyer, Warren Stokes

**DEVELOPMENT**

Associate Director of  
Institutional Advancement ..... Iain Campbell  
Campaign Manager ..... Laura Van Tassel  
Development Assistant ..... Melissa Hoke  
Development Apprentice ..... Daniel Ebert

**EDUCATION**

**Director of Education** ..... **Thomas P. Quinn**  
Assistant Director of Education ..... Ashley Kerns  
Education Programs Associate ..... Pat Shane  
Education Production Associate ..... Angie Confredo  
Resident Teaching Artist ..... Jasmine Hammond  
Education Apprentice ..... Amanda Pasquini  
Acting Apprentices ..... Ann Bragg, Alexa Cepeda,  
Joslynn Cortes, Rafael Martinez-Salgado, Dana Orange,  
Austin Turner, Faith Sacher, Jacob Schrimpf  
Theatre School Faculty ..... Marissa Barnathan, Sarah Biddle,  
Chris Burcheri, Mary Carpenter, Jeffrey Coon, Sharon Geller,  
Nate Golden, Jasmine Hammond, Renee Hansberger,  
Melissa Joy Hart, Heidi Hayes, Jerrell Henderson,  
Noah Herman, Jesse Jones, Ashley Kerns, Brian Kurtas,  
Meghan Malloy, Mary Martello, Emily Mattison, Christina May,  
Drucie McDaniel, Ellie Mooney, Nick Parker, Susan Quinn,  
Tom Quinn, Amina Robinson, Peter Schmitz, Susan Riley  
Stevens, David Stradley, Tara Tagliaferro, Ellen Tobie,  
Bill Van Horn, Leah Walton, Greg Wood, Holly Yokley

**MARKETING**

**Director of Marketing**

**and Public Relations** ..... **Ralph Weeks**  
Communications Manager ..... Amy O'Connell  
Marketing Assistant ..... Adrian Anderson  
Marketing Apprentice ..... Chelsea Pedano  
Public Relations Apprentice ..... Christopher Lee Tutolo  
**Box Office Treasurer** ..... **Rick Dougherty**  
Assistant Box Office Treasurer ..... Tom Brzozowski  
**Ticketing Services Manager** ..... **Mandy Targoff**  
Associate Ticketing Services Manager ..... Krissy de Groot  
Ticketing Services Associate ..... Matthew Morrell  
Ticketing Services Apprentice ..... Carrie Williams  
Senior Ticketing Service Agents ..... Liz Childs, Megan Jones,  
Liam Mulshine, Amanda Robinson, Zech Thompson  
**Tele-Sales Manager** ..... **Andy Burr**  
Assistant Tele-Sales Manager ..... Santina Marie Andretta  
Senior Tele-Sales Agents ..... William Burgess,  
Omar Cameron, Shirley Carter, Jeff Dienes, Carman Fields,  
Kareemah Ferron, Maria Guiana, David Harlem,  
Jonathan Kincy, Joseph Kramer, Andre Mack,  
Adam Markind, Aliyah Martin, Jill Owens, Keith Porter,  
Kevin Rawls, Marie Ricciuti, Barbara Simons, Sal Testa,  
Rob Waldman, Elliot Waters, Hardie Wedeen

**PRODUCTION**

**Production Manager** ..... **Joel Markus**  
Assistant Production Manager ..... Siobhán Ruane  
Production Management Apprentice ... Hannah Drew Trachy  
**Stage Managers** ..... **Lori Aghazarian, Angela Cucco**  
Stage Management Apprentices ..... Rachel Gerrity,  
Amanda Klute  
Studio 3 Stage Manager ..... Meg Lydon  
Studio 3 Stage Management Apprentice ..... Karyn Bohli  
**Technical Director** ..... **Brian Froomjian**  
Assistant Technical Director ..... Kyle Amick  
Shop Management Apprentice ..... Laura Revelt  
Head Carpenter ..... Eric LaValley  
Carpenters ..... Jacob Goddard, Luis Vargas, John Shiner,  
Justin Wyatt, Zachary Laska  
Carpenter Apprentices ... Davis Caramanico, Jeremy Vreeken  
Scenic Charge ..... Leslie Curd  
Assistant to the Scenic Charge ..... Sarah Ganek  
Scenic Artists ..... Rodha Vakharia, Bridget Willingham,  
Raven Buck, Katie Woodward, Natalie Reichman  
Scenic Apprentice ..... Leighann Westermeyer  
**Properties Manager** ..... **Scott Groh**  
Properties Management Apprentice ..... Greer Duckworth  
Head Props ..... Charles Margies  
Props Artisan ..... Kyle Hanahan  
Properties Apprentices ..... Mariah Ganek, Mark Williams  
**Costume Shop Manager** ..... **Mary Folino**  
Assistant Costume Shop Manager ..... Rebecca Dwight  
Costume Apprentices ..... Aidan John Miller, Abigail Stenner  
Lead Dresser ..... Deb Holloway  
Stitchers ..... Kayla Speedy, Gretchen Ellis, Sarah Mitchell  
Wig Designer ..... Dave Bova

Stage Crew  
 Head Carpenter..... Cornelius de Groot  
 Head Electrician..... Frank Garcia III  
 Head Properties..... Bill Lloyd  
 Head Flyman..... Aaron Wilson  
 Head Sound Engineer..... Ryan Peavy  
 Stage Crew Apprentice..... Ryan George  
 Wig/Wardrobe Apprentice..... Aria Durso  
 Costume Stock Coordinator..... Stephanie Muntone  
 Assistant to the Scenic Designer.. Sonoka Fukuma-Gozelski  
 Doctors.....Jeff. Fam. Med. Assoc., Jeff. Otolaryngology



**Actors' Equity Association (AEA)**, founded in 1913, represents more than 45,000 actors and stage managers in the United States. Equity seeks to advance, promote and foster the art of live theatre as an essential component of our society. Equity negotiates wages and working conditions, providing a wide range of benefits for its members, including health and pension plans. AEA is a member of the AFL-CIO, and is affiliated with FIA, an international organization of performing unions. The Equity emblem is our mark of excellence. [actorequity.org](http://actorequity.org)



BACKSTAGE EMPLOYEES AND SCENE SHOP EMPLOYEES ARE REPRESENTED BY THE INTERNATIONAL ALLIANCE OF THEATRICAL STAGE EMPLOYEES. (I.A.T.S.E.).



UNITED SCENIC ARTISTS REPRESENTS DESIGNERS FOR THE AMERICAN THEATRE



The Director-Choreographer is a member of the STAGE DIRECTORS AND CHOREOGRAPHERS SOCIETY, a national theatrical labor union.

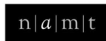
## PROUD MEDIA PARTNERS FOR THE 2016-17 SEASON



NBC10 is proud to support the work and mission of Walnut Street Theatre, the oldest theater in America. For more than 200 years, Walnut Street Theatre has been bringing families together to celebrate arts and culture in Philadelphia, all while remaining committed to local artists, talent and training. From your proud partners at NBC10, "Bravo!"



Metro, Philadelphia's #1 newspaper, is proud to partner with Walnut Street Theatre, now in its 208th season, in supporting Philadelphia's artists and promoting art education in the local communities. Pick up Metro every Thursday for our Going Out section or read it online at [metro.us](http://metro.us).



NATIONAL ALLIANCE for MUSICAL THEATRE

The mission of the Walnut Street Theatre Company is to sustain the tradition of professional theatre and contribute to its future viability and vitality. It does so through the production and presentation of professional theatre; the encouragement, training and development of artists; the development of diverse audiences; and the preservation and chronicling of its theatre building, a National Historic Landmark.



Walnut Street Theatre is a member of the Greater Philadelphia Cultural Alliance, Citizens for the Arts in Pennsylvania, the National Alliance for Musical Theatre, the League of Historic American Theatres and the Greater Philadelphia Chamber of Commerce.



INDEPENDENCE STARTS HERE!

Walnut Street Theatre receives support through a grant from the Pennsylvania Council on the Arts, a state agency funded by the Commonwealth of Pennsylvania.



Walnut Street Theatre acknowledges with appreciation Bryce's Catering Company (Wynnewood, PA) for their elegant catering of theatre events.

Accessibility Equipment, Training and Marketing provided by Independence Starts Here, the statewide cultural accessibility program of VSA PA/Amaryllis Theatre Co., jointly led in different regions in PA by cultural partners in that region. In Greater Philadelphia, Independence Starts Here is jointly led by Art-Reach, Inc.



Support for Walnut Street Theatre's general operations provided in part by the Philadelphia Cultural Fund.



American Airlines is the official airline of Walnut Street Theatre.



[PLAYBILLVAULT.COM](http://PLAYBILLVAULT.COM)

WALNUT STREET THEATRE 15



AMERICA'S OLDEST THEATRE – PHILADELPHIA'S MOST POPULAR THEATRE COMPANY

# WALNUT STREET THEATRE

825 WALNUT STREET • PHILADELPHIA PA 19107

Walnut Street Theatre wishes to express gratitude to the following individuals, corporations, foundations and government agencies for their contributions to the Annual Fund:

## Forrest Society (\$25,000+)

Anonymous  
Buford Alexander & Pamela Farr\*  
American Airlines  
The Arcadia Foundation  
Steven & Joy Bunson\*  
Courier Post  
Bernard Havard &  
Judy Capuzzi Havard^  
Louis and Bessie Stein Foundation  
Fund #2

M&T Bank/Wilmington Trust  
METRO Philadelphia/City Paper  
Mix 106.1  
NBC 10  
PECO  
Pennsylvania Council on the Arts  
The Philadelphia Inquirer  
Philly Weekly  
PNC Arts Alive  
Scott & Sharon Rankin

The Schloss Family Foundation\*  
The Shubert Foundation  
Stradley Ronon Stevens &  
Young LLP  
Syde Hurdus Foundation  
James S. & Lynne Turley\*  
Wells Fargo\*  
William Penn Foundation  
WRTI

## Booth Society (\$10,000+)

12th Street Gym  
AIG  
Aqua  
The ARAMARK Charitable Fund  
Energetx Marketing, Inc.  
Sylvia & Harold Farrey  
Jeff & Janie Ferro  
Alan & Jennifer Freedman\*  
Matt Garfield  
The Hamilton Family Foundation  
Horace W. Goldsmith Foundation  
Independence Foundation

Lincoln Financial Group  
Foundation  
Richard A. Mitchell  
National Endowment for the Arts\*  
Lisa Orberg\*  
Frank & Bonnie Orłowski\*  
Philadelphia Cultural Fund  
Philadelphia Insurance Companies  
PricewaterhouseCoopers LLP  
Progressive Business Publications  
RBC Wealth Management\*

The Rebecca Capuzzi  
Memorial Fund  
Ed & Cyma Satell  
Salem Shuchman & Barbara Klock  
Daniel A. Simkowitz\*  
George S. Smith, Jr.\*  
Southwest Airlines\*  
TD Charitable Foundation\*  
Theatermania/Gretchen Shugart\*  
Vulcan Spring & Mfg. Co.  
Isabelle Winkles\*

## Barrymore Society (\$5,000+)

Anonymous  
Drs. James Byers, III &  
Stephanie Chuipek  
Anna Darby-Matteoda &  
Terrance Darby  
Mr. Peter R. Denton &  
Mrs. Audrey J. Denton  
The Dow Chemical Company  
Gerald & Helga Finsen  
Glenmede  
Bob & Louise Harman

IMC Charitable Foundation  
R. Todd Ireland  
Jane James  
Janet & Lew Klein  
The Louis W. Fryman  
Scholarship Fund  
Macy's Foundation  
Chase & Susan McDaniel  
Mr. & Mrs. Francis J. Mirabello  
Maureen E. Molloy  
The Mutual Fire Foundation

Pennsylvania Lumbermens Mutual  
Insurance Company  
Daniel & Wendi Ruddy  
James D. Scully, Jr. &  
Marlene Stoczko  
Theatre Forward  
Jennifer Toll Schulman  
James & Rose Vendetti  
Walter & Gretel Hellendall  
Education Fund

## Cushman Society (\$2,500+)

Anonymous (3)  
Matthew & Megan Abbott  
Mitchell J. Auslander\*  
Dan & Reeva Benau  
Gene & Joann Bissell  
David S. Blum &  
Mark B. Woodland  
Joseph & Suzanne Calabro  
Bob & Cheryl Carfagno  
Connelly Foundation  
Stephen & Sandy Daukas  
Paula A. Dominick\*  
Dorfman and Kaish Family  
Foundation, Inc.\*

John R. Dutt\*  
Bruce R. & Tracey Ewing\*  
Marilyn J. Faust & Keith Faust  
John & Elizabeth Gontarz  
Mason & Kim Granger\*  
Steven I. & Genevieve Gross  
Brian J. Harkins\*  
The Hassel Foundation  
The Haverford Trust Company  
Kathryn S. Hayes &  
Victor J. Tortorelli  
Herman Goldner Company  
Gregory S. Hurst\*  
Jack Miller Family Foundation

Mr. & Mrs. Jeremy Johnson  
Howard & Janet Kagan\*  
Sonya & Joseph Kelly  
Ken & Elaine Kirby  
Joseph F. Kirk\*  
Joseph & Peter Lomax  
Louis N. Cassett Foundation  
Christopher & Michele Mahle  
John & Janet Marsella, Jr.  
Edward & Roberta Martin  
John R. Mathena\*  
Mr. & Mrs. Arthur Mattia  
Jonathan Maurer &  
Gretchen Shugart\*

Robert Peter Miller  
David & Lyn Montgomery  
Network for Good  
Stephen & Lucy Paccione  
Ann & Lanny Patten  
Michael T. Piotrowicz  
Ronald, Leslie & Amanda Shur  
Roger & Kathi Smith  
TD Charitable Foundation  
John Thomopoulos\*  
Charles & Clarice Thum  
UPS  
Marion M. Walter  
Gloria Watson

## Jefferson Society (\$1,500+)

Anonymous (2)  
Susan Adamczyk  
Blaine Applegate  
Dr. Sucha & Mr. Michael Asbell  
Ash Family Foundation  
Bruce C. Belzak  
Dolores & Ronald Bowlan  
George M. Chamberlain  
John & Mary Conlon  
Sandy & Joanne D'Orazio  
Anthony & Laura Fiorenza  
Sylvan & Sybil Freedman  
Rhoda & Louis Fryman  
Gary & Terri Fulwider  
Al & Luci Giagnacova  
Mr. & Mrs. Charles L. Ginder  
Ron & Sandy Gould

Mr. & Mrs. John D. Graham  
Jerry & Kate Hathaway  
The Hellendall Family Foundation  
Mr. & Mrs. Kenneth Hellendall  
The Herman & Jerry Finkelstein  
Foundation  
Charles W. Horn, III &  
Patrick M. Rumaker  
Karen & Joseph Israel  
Tony & Jane Lane  
Ginny & Gordon Lapinski  
Liacouras & Smith, LLP  
Rosalie & Ben Lipitz  
Stephen E. Lore  
Jeanette & Richard Merion  
Evalind Minor  
Mr. & Mrs. Edward J. Mitchell

Steven & Deborah Mongiaro  
Dr. Jonni S. Moore  
Mario & Rosemarie Nicolais  
Alan Jay Ominsky, MD &  
Judge Marlene F. Lachman  
Frank Plateroti & Dr. John Mully  
Linda Ralls  
Mr. & Mrs. Vincent Redes and  
Morgan  
Robert & Marilyn Rubin  
Joyce Seewald Sando  
Rebekah Sassi & Kirk Berlenbach  
Kathy & Don Shannon  
Bud & Betty Shapiro  
Rita A. Silvestri  
William R. Snell, Esq.  
Harry E. Springfield, Jr.

Mr. & Mrs. Frank Stearns  
Jesse W. & B. Lois Stuart  
Mr. & Mrs. Donald C. Tantum  
Mr. & Mrs. Richard T. Taylor  
Mr. & Mrs. Jim Tholey  
Dr. & Mrs. Alan and Edye Twer  
Lori & Robert Scott Uhl  
Jim & Stephanie Ward  
Joseph & Eileen Walzrynek  
Carolyn Bunny Welsh &  
Harry McKinney  
Joann White  
Rachel & Brian Wilner  
Forrest & Kathy Worrell

## Kemble Society (\$1,000+)

The A Capella Project -  
Philadelphia†  
Anonymous (2)  
Actors' Equity Foundation  
Paul M. & Mary Lee Anderson  
The Ani Fiordimondo  
Scholarship Fund  
Lori K. Belton  
The Benevity Community Impact  
Fund, a fund of American  
Endowment Foundation  
Bradford White Corporation  
Brandywine Realty Trust  
Tracy A. Broomall  
Mr. & Mrs. Leslie R. Butler  
Anastasia Chrysofos  
Commonwealth Land Title  
Insurance Company  
Sally & Tom Coultres  
Virginia R. Cragg  
Drs. Michael Dabrow & Manette Fine  
Nancy L. Dinsmore  
Ken & Marian Disken  
Joseph D'Orazio  
Andrew, Amos, A.J. & K. Driban  
Dr. Charles & Mrs. Brenda Driben  
Robert J. Eberle Jr.  
William Faris

Ray & Ruth Fausak  
Rose Anne & Louis A. Fiore  
Michelle Franklin  
Melynn Freid  
Jack & Ellie Garfinkle  
Walter & Jayne Garrison  
James & Wendy Gerber  
Aileen Gergely  
Dr. & Mrs. Herbert I. Goldberg  
Charles & Dr. Mindy Goldberg Rose  
Lynne Z. Gold-Bikin &  
David O. Smith  
Terry Graboyes  
Julie Grilliot  
Patrick & Shelly Guise  
Mr. & Mrs. Roger Hollowell, Jr.  
Carolyn & Donald Hann  
Mr. & Mrs. Brian Hanna  
Lauren & Matthew Harrington  
Jim & Linda Hartz  
James & Claudia Haviland  
James Herman, Esq. &  
Brenda Lee Eutsler, Esq.  
Robert Hess & Frances Sherr  
Denise D. Hodgson  
Marc Hoyer  
Mr. & Mrs. Robert and  
Elizabeth Hulitt

James Intracaso &  
Bonnie MacDonald  
Julie & Jerry Jacobs  
Ron & Sandy Johnson  
James T. Johnston, Sr.  
Bowen J. Knarr, Jr. & Kate Sheldon  
Joan & Marc S. Lapayowker, MD  
LMC-Plasticsource  
Maureen Lord-Benson  
Frank & Darlene Lordi  
Mr. & Mrs. Marchioli  
Paul J. Marcotte  
James E. Marks  
Penn Medicine  
John J. Medveckis  
Anne Marie Mockus  
Ruth & Jerry Mooney  
Sandy Muller  
Thomas Obade, MD  
James & Laura O'Brien  
Hayler, Robbie & Meighan Osborn  
John & Michelle Prevoznik  
Dr. Renee H. Rollin  
Mrs. Edwin P. Rome  
Ellen Schwartz & Jeremy Siegel  
The Seixas Family  
Dolph Simons  
William & Mary Simpson

F. P. Slack & P. Henriques  
Manning & Virginia Smith  
Martin & Cindy Spector  
Steven & Lynne Spencer  
The Sprocket Foundation  
in honor of Rowland Smith  
Scott & Jennifer Sullivan  
Mark D. Sylvester  
TE Connectivity Employee  
Engagement Fund  
Ellen Tobie  
John & Barb Ungerman  
USLI  
Peter & Viviana Van Deerlin  
Todd & Barbara Vanett  
Mr. & Mrs. Mickey Velez  
Dr. & Mrs. Anthony W. Villare  
Richard Volpe  
Mr. & Mrs. Paris Washington  
Kathryn West  
Dr. & Mrs. Franklin West  
Thom Wiernicki  
Timothy & Leora Wile  
Debbie & Ron Wolf  
June & Steve Wolfson  
Ruth Anne & David Woolsey  
Richard & Diane Dalto Woosnam  
Karen & Doug Zegel

PLAYBILLVAULT.COM

WALNUT STREET THEATRE 17



## Producing Angels (\$500+)

Anonymous  
Howard Aaronson  
Drs. Ronald & Marcia Abraham  
Edward & Roseann Adamczyk  
Mr. & Mrs. James Ahlum  
Mr. Winfield E. Akeley<sup>A</sup>  
Ron & Daryl Albury  
Ms. Margaret M. Alford  
Mr. & Mrs. Raymond and  
Mary Alimenti  
Marylee & Stuart Alperin  
Mr. & Mrs. Richard Anthony  
Albert & Patricia Antrobus  
Lynda Barnes  
Rena & Sam Barnett  
Mary R. Barry  
Thorir & Erna Bjornsson  
John & Linda Braceland  
Tim & Mary Ann Bramhall  
Mark D. Braveman  
George & Nancy Brodie  
Michael J. & Alice L. Brown  
Francis J. Brzozowski  
Thomas F. Brzozowski  
Bob & Treva Burger  
Yvonne & Bruce Burgess  
Stephen & Susan Bush  
Mr. & Mrs. Bransby and  
Margaret Bushey  
Daniel Bussinger  
William & Joann Butler  
Joseph & Angelina Candelore  
Elizabeth F. Casmas  
James Chapman  
John T. Chumbley &  
Carol Chumbley

Dr. Todd & Wendi Cohen  
Mr. & Mrs. Robert H. Cook  
Christine & Kenneth Coulter  
Mr. & Mrs. Alan Craig  
Karen Crane  
Kimberly & Walter Cwietniewicz  
Vic & Eva Dawson  
Mr. & Mrs. William P. and  
Susan P. Degler  
Susan Dornstein & Gary Deutsch  
Richard Dougherty  
Sam Driban & Marilyn Neuhauser  
Mr. & Mrs. Timothy Duffy  
Edelstein-McKinstry Family  
Marie & James Ely  
Paul & Janet Engstrom  
Mr. & Mrs. N. Fenimore, Jr.  
Kalman & Suzan Fine  
Josie Fischer  
Gerald & Jean Frank  
Rick & w Frost  
Ms. Susan M. Garber  
Valerie & David Gladfelter  
Don & Carol Gleklen  
Gail & Samuel Goldstein  
Janis & Stephen Goodman  
Radha & Hari Gopal  
Edward V. Grattini  
Greater Philadelphia  
Cultural Alliance  
David R. Griscom &  
Berminka Solem  
Mr. & Mrs. Joseph and Otti Hallinan  
Sondra & Joel Haness  
Noel Harbist  
Barbara R. Hartenbauer

Lynda & David Herendeen  
Louis & Eileen Hermans  
Bill & Clare Higgins  
Tom & Paula Hollencamp  
Stephen & Mary Holt  
Jerry Hook & Jacqueline Smith  
Tom & Joyce Howley  
Bruce & Alice Hudson  
Mr. Lee H. Hudson  
Mike & Betty Hummel  
Jim & Carol Hunsicker  
Emeline T. Hunter  
Mr. & Mrs. Peter Iannotta  
Charles Intenzo<sup>A</sup>  
Kevin & Fran Jardine  
Tom & Joann Jordan  
Ginny & Len Karabell  
George Kelley  
Elizabeth Kennedy  
Mr. & Mrs. Robert Kennedy  
Alan & Henrietta Kiel  
Walter Kissel  
Gerhart & Anne Klein  
Charitable Fund  
Sherrie & Nelson Klein  
Peter & Joyce Klugherz  
George F. Koch, Jr. &  
Santa A. DiDonato  
Dr. & Mrs. Sylvester Kohut, Jr.  
Talbot & Charlotte Kramer  
Brian Kurtas & Jason Ketelsen  
Ms. Mary H. Ladd  
Christine & Oscar Laskin  
Todd Levin & Andre Beckett  
Rafael & Carol Lissack  
Carol & John Little

Mr. William A. Loeb  
Tinker Lonergan & Dave Johnson  
Terry Loscalzo  
Alexander & Jennifer Macleod  
Lee & Lauri MacMinn  
Kenneth Mallin  
Joseph & Margaret Martelli  
McDowell Posternock, PC  
Jill & Shawn McGlinchey  
Paul & Karen McTamney  
Rick & Daria Meehl  
Ms. Kyle Anne Midkiff  
Miller & Flink Families  
Dr. James Miller  
Rick Moog & Pat Martin  
Tom & Mrs. Paul E. and  
Dorothy Morse Jr.  
Gerry & Brenda Mullane  
Christine Mundt  
Lisa & Tom Murphy  
Mr. & Mrs. Francis Nichols  
Donna & Seymour Nowicki  
Harvey & Lisa Ostroff  
Deborah Ott & Angel Macasieb  
Mr. & Mrs. Frank Palopoli  
Daniel & Michelle Peel  
Ms. Pamela Phelan  
Marcia & Don Pizer  
Dorothy Haas Prais  
Prudential Foundation  
Wayne & Karen Ranbom  
Bruce & Cindy Rangnow  
Beth & Jim Reber  
Juanita & Pete Ricchiuti  
Ann Robinson  
Drs. Brad & Elizabeth Robinson

Mr. & Mrs. Robert K. Roush, Jr.  
Dr. & Mrs. Walter Rubin  
Terry & Paul Rutter  
Stephen M. Sader  
Mr. & Mrs. R. Sampson  
Ann Seiberlich  
David & Joanne Shafter  
Mr. & Mrs. Alex D. Shaloway  
Mr. & Mrs. C.A. Sherman  
Rowland & Elaine Smith  
Bill Spencer  
Mr. & Mrs. Joseph St. Georges  
Steinbiss Family  
Al & Mary Ann Stevens  
Sherry & Ted Strand  
Marlene & Joe Festa  
Bill & Pat Turbett  
John & Victoria Turkik  
Meryl Udell & Kelci  
Raymond Vivacqua  
Dana Votto  
James & Kathleen Walters  
Beau & Valerie Walton  
Brian Watterson  
Raymond & Elizabeth Weddington  
Alan Wender  
West Chester Friends  
Dr. & Mrs. Jack Whittaker  
The William Goldman Foundation  
Victoria Werth &  
Kevin Jon Williams  
Mr. & Mrs. G. V. Willman and  
"Great"  
David & Kathleen Wojcik  
Faith & David Wolford  
Gina T. Zegel

## Directing Angels (\$300+)

Anonymous (3)  
Dr. Milton & Beverly Adams  
David J. Addis & Sankar Singh  
M. Faith Angell & Kenneth Carobus  
Mr. & Mrs. Sheila and Tad Archambault  
Mr. & Mrs. Charles Barnard  
Ellen E. Barrett  
Dr. & Mrs. Kenneth J. Basalik  
Mr. & Mrs. Robert Bauers  
Kathryn Bean  
Don & Lynn Bechtel  
Florence & Ted Begun  
Elinor Beier  
Bruce & Linda Bengtson  
Sidney & David Biddle  
Beaty Bock & Jonathan Miller  
Janet, Dan & Jacob Boris  
Mary Jane Breen  
Theresa Brennan  
David & Janet Breskman  
Shelley & David Brietling  
Mr. & Mrs. Thomas E. Brightman  
Carol E. Brown  
Mr. & Mrs. James Brown  
Jim & Mary Brown  
Jessica M. Bullion  
Wanda M. Bullion  
Marilyn R. Burgin  
C. & M. Novelities and  
Joseph J. Morgan  
Mayor & Mrs. Edward Campbell  
Ms. Susan Carducci  
Mrs. Nancy L. Carvino  
Harvey & Jan Chanin  
Mr. & Mrs. Dale E. Choate  
Mary Anne & Nick Casullo  
Commercial Gaskets  
Lance Curley  
Mr. & Mrs. Kevin Deal  
Robert E. Delaney  
Robert Dennis  
Mr. & Mrs. Joseph P. Denny  
Carol D'Eustachio  
David M. & Susan Y. Devor  
Mr. James V. DiToro, Jr.  
Michael & Laurie Dubyk

Mr. & Mrs. George M. Durgin Jr.  
Francis M. Duziba  
Paul & Rebecca Eckert  
Mr. & Mrs. Melvyn Efron  
Helene Ehrlich-Cohen & Marc Cohen  
Paul & Judy Forber  
Wayne & Linda Feaster  
Bill Flannery Automotive  
Joel Fleisher  
The Fox Foundation  
in memory of Rex & Carol Fox  
Marie H. Garfield  
Dr. & Mrs. Robert J. Geller  
Mr. & Mrs. Barry H. Genkin  
Mr. & Mrs. John and Barbara Geirke  
Cathy Gettis  
Chris & Margie Giles<sup>A</sup>  
Mr. & Mrs. Nicholas Giordano  
Arlene Goldberg  
Nana Goldberg  
Jeffrey & Janis Goldman  
George & Jackie Goldstone  
in memory of  
Dina Michelle Goldstone  
Mr. & Mrs. Robert Goodman  
Mrs. Dorothy J. Graham  
Dr. Marcia & Dr. Alexander Grande, III  
Michael & Dawn Grasso  
Ina & Earl Gross  
Dr. & Mrs. Hammer  
Tom & Rosemary Hampton  
Constance T. Happerset  
Dr. Nancy Harris &  
Dr. Mitchell Rodman  
Mr. & Mrs. Thomas Hemphill  
Jack & Marilyn Hines  
Victoria Hipple  
Mr. & Mrs. John R. Hogan  
Frank Houston  
Robert & June Hudson  
Jo & Thomas E. Hyden  
Deborah Iacovone Lord  
Brian & Kim Itterley  
Ginny & Frank Jackson  
Barbara John  
Dr. & Mrs. Gerard Johnson

Mr. Richard Johnson  
Sharon J. Jones  
Marcia & Ned Kaplin  
Thomas Kay  
Paul Kelly, III & Kate M. Harper  
John Kerr  
Mr. & Mrs. W.A. Kline  
John & Paulette Labar  
Harry & Stacy LaBelle  
Mr. & Mrs. Saverio Lacroce  
Robert & Phyllis Lambeck  
Ms. Abbie Lampe  
Dr. & Mrs. Scott Landvatter  
Cheryl Lane  
Earl & Mary Laney  
Dr. Howard R. Levy  
Linn One Hour Cleaners, Inc.  
Patricia Lukaszow  
Reaves & Francis Lukens  
Dominic & Marian Macchione  
Boyd & Judith Mackleer  
Julia Maguire  
Theodore & Kathleen Malpezzi  
Tony & Lori Mannino  
Lana & Linda Marcinek  
Laura Markowitz & Steven Miller  
Mr. & Mrs. Joseph Maszychik  
Mr. Vincent Massimiano  
Mr. & Mrs. Steve Mazda  
Regenia McAden  
Ilene Wolf McCaffrey  
Mr. & Mrs. J. McCarthy  
Jeffrey & Brenda McCooch  
Stu & Sandy McGee  
Mr. Nelson Medynec  
Miriam & Stan Meltzer  
Patricia S. Meyer  
Alex Madal  
Ms. Wanda Mohr  
Patricia M. Moore  
Hermann & Barbara Moser  
Dr. & Mrs. Richard and Bonnie Moses  
Laura Nolet  
Mr. & Mrs. Thomas O'Reilly  
Mr. Joseph Ostaszewski  
Lynn Owen

Mr. & Mrs. Thomas and Elizabeth Pack  
Mrs. Joan Palitz  
Mary & Daniel Palmer  
Mr. William Panella  
Jay Pastelick  
Joseph Paylor  
Linda Penza  
L. Stephen & Rochelle Perchick  
Ruth Peters  
Joe & Pat Piccerillo  
Eileen Pieper  
Mr. & Mrs. Steven B. Pinsky  
Drs. Domenic & Dorothy Pisano  
Pareca Family  
Joan B. Prewitt  
Robert & Anne Pritchard  
Pat Proudan  
Thomas Quinn &  
Susan Nicodemus Quinn  
Mary Prychka  
Joseph & Jan Quill  
Mr. & Mrs. Thaddeus Raczkowski  
Dr. & Mrs. Christopher Rapuano  
Deborah Radia  
Kurt Reichert  
Kevin & Jane Roach  
Paul V. Robinson  
Sally & Edwin Rosenthal  
Mr. Arnold Rovner  
Janet Rush  
Dr. Ronald Saffor  
Phyllis Sambar  
Joyce & Seth Schulman  
C. H. Schwertner  
Irving Sclainick  
Evelyn Scudder  
Ron Seiler  
Mary & Leslie Shaw  
Ragan Sheffer  
Dick & Maria Shroy  
Adam & Christine Sigal  
Marsha M. Silberstein, M.D.  
Ronald M. Silverstein  
Barry & Sandra Singer  
James L. Smith  
Michael & Christine Smith

In memory of Robert & Mary Grace  
Sobczak  
John Solari  
Mr. & Mrs. Jason Sorgini  
Mr. & Mrs. Donald Stoudt, Sr.  
Mr. & Mrs. Domenic Stellato  
Bernadette Sterling  
Richard & Linda Stoops  
Ruth & Norman Stuessy  
Regina Switzer  
Diana Sawyer, Inc.  
Mr. & Mrs. Peter Tallman  
Dr. & Mrs. Sylvan Taub  
Wayne Tobolski  
H. Selwyn & Judith S. Torrance  
Mr. & Mrs. Scott and Jane Uhr  
Dr. & Mrs. Ronald E. Uschold  
Warren Uzialko  
Sarah & John VanBuren  
Joseph & Sandra Vasta  
Gary & Barbara Vernick  
Lew & Hella Volgenau  
Michael Wacey &  
Elaine Jenkins-Wacey  
Thomas Wados  
Margot Waitz & Gordon Manin  
Jeff Walsh & Mark Kingensmith  
Mr. & Mrs. Michael B. Walsh  
Joseph R. Waters  
Richard & Patricia Webster  
Dania Welchhoff  
Roy & Sharon Wells  
Mr. & Mrs. Howard White  
Russ & Carol Whitman  
William & Terry Williams  
David & Karen Winning  
Thomas & Betty Jean Wissinger  
Judith & Fred Young  
Laurie & Paul Young  
Sandra Zolundansky  
Dr. Stephanie Zarus  
Susan & Kevin B. Zebrowski  
Ms. Nancy Zwick



## Benefactors (\$200+)

Anonymous (11)  
Mr. Gerald Abelson  
Virginia & Louis Ackler  
Mr. & Mrs. Donald Alderfer  
Mr. & Mrs. John Annand  
Barbara & Leonard Aquilino  
Elizabeth Avery  
Jacqueline Avilband  
Arthur & KC Baldodan  
Michael & Mary Barbee  
Kimberly & Kara Barker  
Dr. Michael Barnett  
Neal & Sandy Barnett  
Charles E. Barton, Jr.  
Andrew Baumbach  
Ronald & Joyce Boyer  
Madeline Bayliss  
Phyllis F. Belzok  
Elaine & Edward Benoff  
Ruth Ann Bice  
Mr. & Mrs. Thomas W. Bieri  
David & Deana Binder  
Ken & Marie A. Bishop  
Ron & Anita Block  
Kerry Bluestein  
Mr. Harris Block  
in honor of Denise Hodgson  
Bonnie Bozek  
Barbara Brady  
Paul & Susan Brennan  
Marion & Francis P. Brennan  
Laurel Brennan  
Peter & Jane Bridge  
Alexandra Brock  
Chuck & Jill Brownawell  
Mr. & Mrs. Ed Burdall and Sons  
Mr. & Mrs. Christopher Burks  
Dr. & Mrs. Carl Byck  
Pam & Rick Byrd  
Gerard & Nancy Callan  
Donnamae Camm  
Mary Campanell  
David & Barbara Carlin  
Fred Carpentier & Carol Borzumato  
Christopher & Jeff Carver  
Wendy & Joseph Casillo  
Jennie Castaldo  
John & Marguerite Celani  
Dr. Barbara Chamberlain  
Marylou Chappel  
Nelly & Scott Childress  
Mr. & Mrs. Philip Claxton  
Elaine M. Clay  
Mr. Ralph Clemmer  
Mr. & Mrs. Peter and Jane Cohen  
Robert & Deborah Cohen  
Stephen D. Cohen  
Allan & Rose Coletta  
Lori Corbett  
Robert & Ginna Cranston  
Richard & Diana Grean  
Mr. & Mrs. Albert Crescenzo  
Tom & Sue Crop  
Stefania Crum  
Malachi & Olivia Cunningham  
Sophie & Robert D'Agostino  
Ms. Michele Daniele & Mr. Chris Coffey  
Stephen Dante & Karen Fung Dante  
Mary Daughinis  
Kristy DeTitta  
Rosemary Delois  
Mr. & Mrs. James P. Deckard  
Thomas Delle Donne—  
Optima Cleaning System  
In Memory of Richard P. DiCamillo  
Gail Dillon  
Lisa & Donald Dissinger  
David Dondoro  
Mr. Randy Donovan  
Henry Doran

George Drach  
Mr. & Mrs. Dragone  
Gary & Marlene Dworkin  
Gail Ehrlich  
Steve Eisenstein & Lisa Longo  
Jean Berg Eslozgh  
Arthur & Eileen Etchells  
Ms. Joan M. Farkas  
Anne M. Farrington  
Judy Featherman, Ed.D.  
Maria & William Feeley  
In memory of Mary Blair Fields  
Leona Fierst  
Ellen Slott Fisher  
Mark & Fay Fisher  
Patricia & Kevin Fisher  
Mr. & Mrs. Philip W.J. Fisher  
Cheryl & John Fuff  
Mr. & Mrs. C. D. Farney  
Sandy Fox-Jones  
Mr. & Mrs. Kenneth Frank  
Mrs. Barbara & Len Frank  
Elizabeth Freeman  
Margaret Fraiz & Gerald Heckmann  
The Friedenthal Family  
Martin & Jane Friedman  
Stephen & Marian Galer  
Mary Gallagher  
Mr. Robert Garrett  
William & Alice Garvey  
Kathleen F. Gender  
Deborah Giacomoni<sup>†</sup>  
Bill & Gini Giombastista  
Ellen Gifford  
Stephen Gift  
Mr. Stanley Ginsburg  
Patrick Glorioso  
Hal & Bernice Goldberg  
Arlene Goldstein  
Dan Galoveyka  
Ms. Jennifer Goodbinder  
Dale & Laura Goodreau  
Dr. Priya Gor & Dr. Darius Sholevar  
Fred & Sue Gordon  
Francis R. Grebe  
Roe Greenberg  
Jessica Greenfield  
in memory of Helen M. Powers  
Mr. & Mrs. Michael and Linda  
Greenstein  
Eleanor Gribok  
Mr. & Mrs. Benjamin Griffith  
Steve Griffith  
Judith Guise  
Duane & Bernie Gustad  
Mr. Robert Hafter  
Mr. Harry Hannigan  
Judy A. Hansen  
Dr. John A. Harman  
Susan M. Harman, Esq.  
Jennifer Hartey  
Jennifer Hartnett  
John & Merrill Henley  
Herb & Gayl Henze  
Sandon Herzlich  
Connie L. Hewitt  
Alicia & John Hlywak  
Nancy Hobbie  
Ms. Michele Howard  
Sam Howe & Dodi Fordham  
Clara Huntzinger  
Harold Hurvitz  
Kathy & Dave Hychalk  
Dr. & Mrs. Geza Incze  
in memory of Robert I. Incze  
Dr. & Mrs. Stanley R. Jacobs  
Suzanne Janson  
Dr. & Mrs. Edwin A. Jensen  
Deborah J. Jones  
Frances Jones

Bert & Connie Jones  
Mr. Jay B. Jones  
Homi Kapadia  
Dennis Keleshian & Chris Dostal  
John & Barbara Kelly  
John Kennedy, Jr.  
Jonathan, Kathleen & Stacy Ketcham  
Paul Keuerleber  
Lois Khatchadourian  
Kathy Kingston  
Wayne Klotzbach  
Charles S. Knothe  
Marie Knup  
Mrs. Sandra Koch  
Michael Kolczynski  
Don & Diane Kolodziejski  
Janet & Michael Kott  
Bruce & Jean Kraeuter  
Joseph & Kathryn Kraher  
Vivienne & Charles Kramer  
Mrs. Suzanne Kratz  
Mr. & Mrs. Douglas Kriebel  
Mrs. Esther Kurtz  
Howard & Pat Kysner  
Andrew & Rebecca Lamborn  
Mary Landherr  
Karen & Robert Landman  
Charles & Lucinda Landreth  
Daniel Lee  
Tom & Judy Leidy  
Harry & Carol Leopold  
Suzanne & Stuart Levy  
Craig & Stephanie Lewis  
Dr. & Mrs. Harold Lightstone  
Dr. & Mrs. Matt Linn  
Lynn & James Litzke  
Harold Lloyd  
Robert & Sharon Long  
Edward Longazel  
Mr. & Mrs. James Love  
Richard & Kathleen Lowry  
Barbara Luptak  
Marie & Bill Magee  
Ms. Kristin Maguire  
Joe & Elena Maloney  
Mr. & Mrs. Jeffrey Mannings  
Mr. Robert Marcinkowski  
Susan & James Marinello  
Greg & Kathy Martin  
Judith Martin  
Mary Beth Martino  
Debbie & Elliott Maser  
Marvin Mashner  
John & Mary Mattioni  
Karen V. Matz  
Janet May  
Jim McCaffery  
Nora McElean Hopson & Ken Cenci  
John & Erma McEwen  
Mr. & Mrs. Thomas H. McGann  
Harriet McGraw  
Mr. & Mrs. Thomas McHugh  
Frank & Carolyn McIntosh  
Ms. Elynn McMullin  
Donna McNeil  
Dr. & Mrs. James Meadowcroft  
Jeffrey Melton  
Stacy & Richard Merkin-Eden  
Kenneth & Connie Merritt  
Rev. & Mrs. Raymond and Deborah  
Merrweather  
Annette Meyers  
Lois Meyers  
Mr. & Mrs. Antonino Micela  
Carol Micklin  
Mark Migliaccio Achilles Vitale  
Jim & Mary Ann Miles  
Arthur P. & Marjorie L. Miller  
Herbert G. Miller, Jr.  
Stephen & Maria Mockbee

Kyle Musal  
Jerry A. Neessens  
Mr. Stephen Negro  
C. Raymond Nelson  
Gene & Sally Nicholls  
Harvey & Sylvia Nisenbaum  
Mr. Walter Norris  
Thomas Nowakowski  
Mr. & Mrs. R. Lynn Oakes  
Mr. & Mrs. Stuart Ockman  
Jeremy & Sandy Oliver  
Rick Osman  
Sharon Ott  
Dr. Arlyne B. Pacho  
Mrs. Steven & Catherine Parrillo  
Mark & Eileen Parsonage  
Mr. & Mrs. Joseph Pasquarello  
Mr. & Mrs. David C. Pate  
Elizabeth & Jeffrey Paul  
PCA Industrial & Paper Supplies, Inc.  
John & Judith Peakes  
Susan Peck  
Dr. & Mrs. Bernard and Joy Pekala  
Penn Jersey Building Maintenance  
and Window Cleaning  
Mary Lynn Penn  
Mr. David B. Penske  
Dr. Maria Perez-Navarro  
Margaret Perryman & Bill Benton  
Sunny Peterman  
Marie Theres Piccioni  
James L. Pierson  
Mr. & Mrs. Martin Pley  
Ms. Frances Pliskin  
Patricia H. Polinsky  
Mrs. Judith Porter-LoBue  
Debra Quinn  
Diana & Philip Racobaldo  
David Rathbun  
Raynor Services  
Mr. Martin Redman  
Mr. & Mrs. Grahame P. Richards  
Dr. & Mrs. Melynn Richter  
Brythe C. Ricks  
Christopher Ritchie  
Joan C. Roberts  
Carl & Donna Robinson  
Janice Robinson  
Mr. & Mrs. Albert Rohman  
Bill Rose  
Thomas Rose  
Mr. & Mrs. David Rosen  
Mr. & Mrs. Robert Rosenbaum  
Leonard M. Rosenfeld  
James & Aldona Rubillo  
Mr. & Mrs. Richard Ryan  
John & Peggy Saba  
Joe Sacchetti & Family  
Phillip Sager  
Alan & Linda Sanders  
Joyce Scarfo  
Mr. Gerald Schatz  
Carol & Gregory Scott  
Eddy & Sallie Sager  
William & Nancy Seibert Jr.  
Lela B. & Don S. Seidel  
John & Mary Grace Senator  
David & Claire Service  
Barry & Judy Shafter  
Dr. Robert G. Sharrar  
In memory of Linda Sheedy  
Carol & Douglas Sherwood  
Ron & Naomi Shestack  
Robert Shumelman  
Nancy & Alan D. Silverman  
Arlene Glenn Simolike, Esq.  
Gail & Larry Simon  
Susan Sjostrom  
Robert Snow  
Bonnie & Steven Snyder

Erma Cocci Sobol  
Sara & Carly Sokoloff  
John & Christine Sommer  
Dorothy Sopp  
Robert & Nancy Spalding  
Joseph & Patricia Spampinato  
Eric Spare  
John Spielberger  
Ms. Anna M. Sprows  
Letitia Squillaro  
Joan S. Stafford  
Mary Ann & Bill Stanczak  
Mrs. Alie F.B. Stanford  
Gleenn & Megan Stanton  
Mrs. Arthur & Sherry Starr  
Billie Stein  
Dr. Paul & Kathleen Steinberg  
Marge & Ty Steinberg  
Mr. Raymond Stephano  
Mrs. Cynthia Stewart  
Mr. & Mrs. Elbridge F. Stockwell, Jr.  
Edward & Joyce Stoerber  
Alice Stoll  
Paul Stolpen  
Bruce & Sue Stone  
Mr. & Mrs. Richard Stoudt  
Alice & Walter Strine  
Mr. & Mrs. Daryl and Linda Stull II  
Patricia Taub  
John & Rochelle Thompson  
Beverly Thomsen  
Donald Tihansky  
Mr. & Mrs. John Tomaselli  
Melinda Trafford  
Nicholas & Robert Tribit  
Suzanne & Judith Troiano  
Kathy Valla  
Mr. & Mrs. Carmen Vecchio  
Margaret & Rick Volpe  
Mr. & Mrs. Frank and Doris Walker  
Dr. Valaida S. Walker  
Mr. John Walsh  
Michael & Patricia Walsh  
Kenneth Watson  
Mr. & Mrs. Robert and Lucinda Weiner  
Joseph & Carol West  
Carl & Ann J. Williams  
Rick & Sandy Williams  
Marion M. Wolfert  
Ms. Linda S. Wynne  
Sheryl T. Zigon  
Gloria Zingaro & Todd M. Welch  
Mr. & Mrs. Leon Zmroczek  
Eileen & Don Zolatorofe

Walnut Street Theatre graciously acknowledges additional supporters online at [WalnutStreetTheatre.org/support/ways-to-give](http://WalnutStreetTheatre.org/support/ways-to-give)

For more information regarding Walnut Street Theatre's annual fund, affectionately called our 'Angels Campaign,' please contact the Development Office at (215) 574-3580 or [angels@walnutstreettheatre.org](mailto:angels@walnutstreettheatre.org). In addition to Playbill listings, benefits associated with each level of giving can enhance your experience when you attend the Theatre!

<sup>†</sup>Includes a donation made to The Rebecca Capuzzi Memorial Fund

<sup>†</sup>Includes a donation made to The Ani Fioridomondo Scholarship Fund

\*Donation made to Theatre Forward's Educating Through Theatre program