

PLAYBILL®

 WALNUT STREET THEATRE
PHILADELPHIA, PENNSYLVANIA

ELVIS

A MUSICAL REVOLUTION



Prudential PRESENTS

MARQUEE MOMENTS

A BROADWAY TICKET GIVEAWAY

IN PARTNERSHIP WITH **PLAYBILL**



TICKETS ON US!

Enter to win two tickets to the theatre show of your choice—with our Marquee Moments Ticket Giveaway.

Scan the code now to get started.

And start dreaming about which soul-stirring, standing-ovation-inspiring show you want to see!



PrudentialMarqueeMoments.com

NO PURCHASE NECESSARY. VOID WHERE PROHIBITED. Open only to legal residents of the 50 United States and District of Columbia, 18 or older. The monthly contest ends at 11:59 p.m., April 16, 2024. Official rules and contest requirements available at www.PrudentialMarqueeMoments.com. Investment Products: Not FDIC-insured * No Bank Guarantee * May Lose Value.

© 2023 Prudential Financial, Inc. and its related entities. Prudential, the Prudential logo and the Rock symbol are service marks of Prudential Financial, Inc. and its related entities, registered in many jurisdictions worldwide.

1072501-00001-00

PLAYBILL®

Chairman Emeritus: Arthur T. Birsh
Editor in Chief Emeritus: Joan Alleman
Secretary/Treasurer: Shamindra Jagnanan

Chairman & CEO: Philip S. Birsh
Chief Financial Officer: Shamindra Jagnanan
Chief Operating Officer & VP: Alex Birsh
Director of Manufacturing: Robert Cusanelli
Executive Assistant to CEO & COO: Dalconerys Reyes

Editor in Chief: Diep Tran
Production Managers: Alexander Near
Jenna Perrino
Prepress Manager: Seán Kenny
Prepress Specialist: Benjamin Hyacinthe
Managing Editor, Classic Arts: Stephen Vratots
Art Director: Kesler Thibert
Creative Services Manager: Dean Greer
Managing News Editor: Logan Culwell-Block
Features Editor: Talaura Harms
New York Broadway Editors: Scott Hale
Khadijah Rentas
Managing Program Editor: Matt Bonanno
Program Editors: Amy Asch
David Porrello
Andrew Rubin

Publisher, West Coast Sales & Partnerships: Glenn Shaevitz
Vice President of Sales: Joshua Stone
Associate Publisher: Jolie Schaffzin
Head of Sales for Theatrical and Regional Markets: Nicholas Foster
Director, Restaurant Advertising: Clara Barragán
Sales Marketing Manager: Kelly Werner
Advertising Sales Associates: Jackie Churgin
Franchesca Reese
Sales Assistant: Joe Weinberg
Ticket Manager: Yadira Near

Chief Technology Officer: Jon Goldman
Director of Digital Operations: Andrew Ku
Creative Director: Bryan Campione
Director of Events & Creative Strategy: Leonard Rodino
Director, Online Advertising & Operations: Jim Cairl
Senior Digital Media Manager: Katie Clooney-Gainey

PHILADELPHIA ADVERTISING SALES
Franchesca Reese
(646) 751-4153 | freese@playbill.com

Advertising Sales
729 Seventh Avenue, 4th Floor
New York, New York 10019
(212) 557-5757

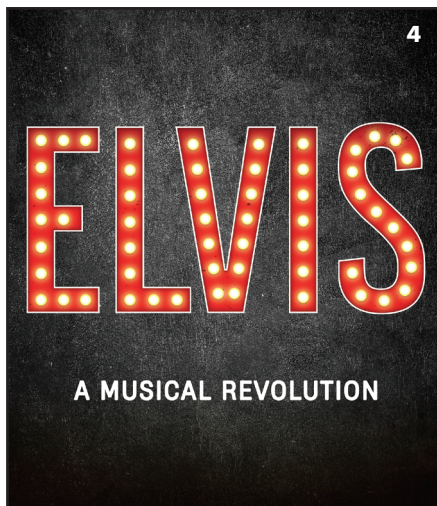
PLAYBILL® is published by PLAYBILL Incorporated, 729 Seventh Avenue, 4th Floor, New York, NY 10019. Copyright 2023 by PLAYBILL Incorporated. All Rights Reserved. PLAYBILL® is a Registered Trademark of PLAYBILL Incorporated.

Contents

OCTOBER 2023

WELCOME 2

THE PROGRAM 4
Including Cast, Who's Who and Credits





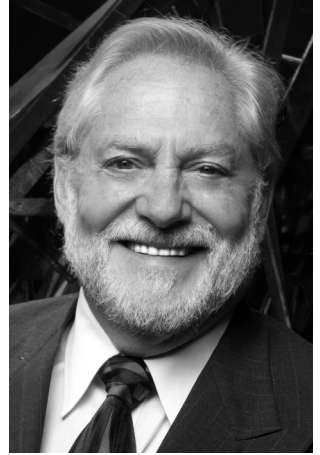
FOUNDED 1808

AMERICA'S OLDEST THEATRE – PHILADELPHIA'S MOST POPULAR THEATRE COMPANY
WALNUT STREET THEATRE
825 WALNUT STREET • PHILADELPHIA, PA 19107

Dear Theatregoer,

Welcome back to another exciting season at the Walnut! As we enter our 215th season (and my 41st), I want to thank you for your continued support to which we owe our remarkable success. I am delighted that you've joined us for our 2023-24 season premiere, *ELVIS – A Musical Revolution*.

We are thrilled to finally present this exciting new musical, a celebration of a cultural icon whose impact on music history is immeasurable, and I could not be more thankful for the talented artists bringing it to life. We extend a heartfelt invitation to you to join us for our other remarkable productions this season, each offering its own exceptional exploration of love. Coming up next on our stage, celebrate the holidays with us and immerse yourself in the enchanting world of Disney's *BEAUTY AND THE BEAST*, a timeless and magical love story for the entire family. Then, as we welcome the new year, join us for Edward Albee's explosive Tony Award Best Play Winner, *WHO'S AFRAID OF VIRGINIA WOOLF?* Following that, we'll commemorate the 100th anniversary of The Marx Brothers' legendary run at the Walnut with a sidesplitting and heartwarming tribute in *GROUCHO: A LIFE IN REVUE*, celebrating 'The Kings of Comedy.' Lastly, our season will culminate with the enthralling journey of *BEAUTIFUL - THE CAROLE KING MUSICAL*, promising an unforgettable ride through the life of a music icon.



In addition to our exciting Mainstage Season, we are thrilled that classes at The Theatre School at Walnut Street Theatre are underway for our fall semester, serving students of all ages. If you or someone you know has a passion for performance, I encourage you to review our offerings for this and upcoming semesters.

I am also pleased that we will be expanding our Walnut Street Theatre for Kids' productions this season, bringing back the favorite Charles Dickens' *A CHRISTMAS CAROL* for the holidays, and the much-loved *MADAGASCAR JR.* in the spring.

For now, sit back and enjoy the heart-stopping excitement of *ELVIS – A Musical Revolution*. We are honored to have you back at the theatre and look forward to seeing you again soon!

Sincerely,

Bernard Havard,
President and Producing Artistic Director

NOW IN ITS 3RD TRIUMPHANT YEAR!

“ALL HAIL!”

VOGUE

BROADWAY'S
“EUPHORIC
CELEBRATION!”

Entertainment



SIX



WRITTEN BY 2022 TONY AWARD[®] WINNERS
TOBY MARLOW & LUCY MOSS

BROADWAY • ON TOUR

SIXONBROADWAY.COM



Proud Partner
of SIX



ORIGINAL BROADWAY CAST | PHOTOS BY ANDREY FEDERES



FOUNDED 1808

AMERICA'S OLDEST THEATRE – PHILADELPHIA'S MOST POPULAR THEATRE COMPANY

WALNUT STREET THEATRE

825 WALNUT STREET • PHILADELPHIA, PA 19107

BERNARD HAVARD

President and Producing Artistic Director

October 3 – November 5, 2023

ELVIS—A Musical Revolution

Book by **SEAN CERCONO** and **DAVID ABBINANTI**

Based on a concept by **FLOYD MUTRUX**

Set Design
**ROMAN
TATAROWICZ**

Costume Design
MARY FOLINO

Lighting Design
MICHAEL GILLIAM

Sound Design
ED CHAPMAN

Wig and Makeup Design
**CARISSA
THORLAKSON**

Projection Design
CAITE HEVNER

Director of
Production
SIOBHÁN RUANE

Stage Managers
**ELIZABETH HAROIAN
MICHELE BEGLEY**

Associate
Director
KIKAU ALVARO

Associate
Artistic Director
BRIAN KURTAS

Music and Vocal Direction by
CHRIS BURCHERI

Directed and Choreographed by
JEFF CALHOUN

SPONSORED BY  & 

Originally Produced by

Robbins Lane Entertainment American Pop Anthology Temple Dog Productions Big Block Media Holdings
SONY/ATV Music Publishing John Jerit/Paulo Aur RCA Records

Michael Speyer & Bernie Abrams Terry Schnuck Stefany Bergson Judith Borelli & Emilio Borelli

Howard Weissman/Howard Goldenfar Dot Dot Dot Productions, LLC

by special arrangement with Authentic Brands Group and Draw A Circle, LLC

MARK D. SYLVESTER

Managing Director

Director of
Development
SCOTT BLACKER

Director of
Education
T.J. SOKSO

Director of Marketing
and Public Relations
STEPHEN RAPP

Here, life is a symphony.
And you're the conductor.



At The Mansion at Rosemont, you can follow your lifelong passions or lean into new ones, thanks to a host of thoughtful lifestyle amenities, ever-changing programs and the support of a community that's right in step with your needs.

We invite you to call and schedule a visit.

The Mansion at Rosemont

a human good community

WELCOME TO LIFE PLAN COMMUNITY LIVING

(610) 550-8343 | TheMansionAtRosemont.org



INDEPENDENT LIVING | PERSONAL CARE | MEMORY SUPPORT

CAST

(in order of appearance)

Elvis Presley	LUCAS PASTRANA*
Kid Elvis	JOEY CAROTO† / HUNTER SILVERMAN‡
Roy Brown/Prisonaire/Jordanaire/Otis/Ensemble	EDWARD C. SMITH*
Dewey/Stage Manager/Ensemble	CHRIS FITTING*
Betty/Jordanaire/Show Girl/Ensemble	CHALI COOKE*
Jackie Brenston/Prisonaire/Chuck/Reverend/Ensemble	CHRISTOPHER MCCREWELL*
Sister Rosetta/Ensemble	TIARA GREENE*
Sam Phillips/Frank Sinatra/Ensemble	ASA SOMERS*
Marion/Show Girl/Show Singer/Ensemble	KARA HALLER*
Dixie/Show Singer/Priscilla/Ensemble	JENNA PASTUSZEK*
Gladys Presley/Ensemble	REBECCA ROBBINS*
Vernon Presley/Ernie/Studio Executive/Ensemble	PAUL L. NOLAN*
DJ/Ronnie/Ensemble	JAMES KERN
Scotty Moore/Glen/Ensemble	KEN SANDBERG*
Bill Black/Jerry/Ensemble	JAMES DAVID LARSON*
Colonel Parker/Ensemble	KELLY BRIGGS*
Ann-Margret/Jordanaire/Show Singer/Ensemble	MEREDITH BECK*

DANCE CAPTAIN

JENNA PASTUSZEK*

UNDERSTUDIES

GAVIN E. BARDEN (Kid Elvis), LINDSEY COFFEY (Marion/Ensemble), TOMMY CRAIG (Sam Phillips/Frank Sinatra/Ensemble), SHANNEN MICHAEL DOYLE (Dixie/Show Singer/Priscilla/Ensemble), STEVE HARDING (Bill Black/Jerry/Ensemble), BRIAN HERRICK (Ensemble), CAPRI HILL (Sister Rosetta/Ensemble), BOBBY KRAMER (Vernon Presley/Ensemble), BLAKE LAISURE (Jackie Brenston/Prisonaire/Chuck/Reverend/Ensemble), WILLIAM McHATTIE (Scotty Moore/Glen/Ensemble), KATIE McQUAIL (Ann-Margret/Ensemble), MICHAEL PERÉ (Ronnie/Ensemble), BRIANNA ROWLAND (Betty/Ensemble), MATT RYDZEWSKI (Colonel Parker/Ensemble), LARNEL SATCHELL (Ensemble)

†Performs weeknights; ‡ Performs weekends

* The Actors and Stage Managers employed in this production are members of Actors' Equity Association, the theatre union of Professional Actors and Stage Managers in the United States.

The videotaping or other video or audio recording of this production is strictly prohibited.

ELVIS – A Musical Revolution

is presented by special arrangement with Broadway Licensing, LLC.

www.broadwaylicensing.com



Wood·Mode[®]
FINE CUSTOM CABINETRY

Celebrate your style.

Discover personalized design and highly functional accessories for your home.

Contact us to discover more.

Wall & Walsh, Inc.
610-789-8530

wood-mode.com

8320 West Chester Pike
Upper Darby, PA 19082

MUSICAL NUMBERS

ACT I

Welcome to Beale St.....	Ensemble
Just Walkin' in the Rain.....	The Prisonaires
My Happiness/Peace in the Valley.....	Elvis, Gladys, Kid Elvis
Goofin, Around Medley.....	Elvis, Dixie
That's All Right.....	Elvis, Blue Moon Boys, Ensemble
Hit the Road.....	Elvis, Blue Moon Boys
This Train Is Bound for Glory.....	Reverend, Ensemble
Circle Be Unbroken.....	Show Singers
Heartbreak Hotel.....	Elvis, Ensemble
Television Medley.....	Elvis, Blue Moon Boys, Jordanaires
Love Me Tender.....	Elvis, Kid Elvis
Peace in the Valley Reprise.....	Kid Elvis, Ensemble

THERE WILL BE ONE 20-MINUTE INTERMISSION.

ACT II

Blue Suede Shoes.....	Elvis, Ensemble
Are You Lonesome Tonight.....	Elvis, Priscilla
Love Me Tender/Witchcraft.....	Elvis, Frank Sinatra
Viva Las Vegas.....	Elvis, Ensemble
You're the Boss.....	Elvis, Ann-Margret
Hard Headed Woman.....	Elvis
Movie Medley.....	Elvis, Ensemble
Baby, What You Want Me to Do.....	Chuck, Otis, Kid Elvis
Can't Help Falling In Love.....	Elvis
Trouble/Guitar Man/A Little Less Conversation.....	Elvis, Ensemble
Finale/Bows.....	Company

THE BAND

Keyboard/Conductor (10/3–10/29): Chris Burcher

Keyboard/Conductor (10/31–11/5): Geoffrey Langley

Reed 1 (Alto sax, tenor sax, clarinet, flute): Frank Mazzeo

Reed 2 (Tenor sax, baritone sax, flute, clarinet): Bob Quaile Trumpet: Jim Ward;

Trombone: Bob Gale; Guitar 1/Associate Conductor: Michael Quaile

Guitar 2: Tim Schilling; Bass: Fred Weiss; Drums: Kevin Blanke

MUSIC CREDITS

CC Rider Written by Elvis Presley, Ma Rainey. Published by Elvis Presley Music c/o Songs of Steve Peter/Raleigh Music Publishing, Elvis Presley Music, ABG Elvis Songs/Universal Music Publishing. **A Little Less Conversation** Written by Billy Strange, Scott Davis. Published by Elvis Presley Music/Raleigh Music Publishing, Elvis Presley Music, ABG Elvis Songs/Universal Music Publishing. **All Shook Up** Written by Otis Blackwell, Elvis Presley. Published by Elvis Presley Music/Raleigh Music Publishing, Elvis Presley Music, ABG Elvis Songs/Universal Music Publishing. **Are You Lonesome Tonight** Written by Roy Turk, Lou Handman. Published by Bourne Co., Cromwell Music/TRO. **Aura Lee** Written by W.W. Foskick (1965), George R. Poulton (1867). Public Domain. **Baby Let's Play House** Written by Arthur Gunter. Published by BMG Bumblebee (BMI) obo Lpvg Music (BMI), Embassy Music Corp (BMI)/Music Sales Corp. (BMI). **Baby What You Want Me To Do?** Written by Jimmy Reed. Published by BMG Platinum Songs (BMI) obo Conrad Music, A Division Of Arc Music Corp (BMI) obo itself and Seeds of Reed Music (BMI). **Blue Moon** Written by Lorenz Hart, Richard Rogers. Published by EMI Robbins Catalog.

Blue Moon of Kentucky Written by Bill Monroe. Published by BMG Platinum Songs obo Bill Monroe Music. **Blue Suede Shoes** Written by Carl Perkins. Published by Wren Music Co./MPL. **Burnin' Love** Written by Dennis Linde. Published by Sony/ATV Songs LLC. **Can't Help Falling In Love** Written by George David Weiss, Hugo Peretti, Luigi Creatore. Published by Gladys Music/Raleigh Music Publishing. **Change of Habit** Written by Ben Weisman, Buddy Kaye. Published by Gladys Music Joachim Jean Aberbach c/o Steve Peter Music/Raleigh Music Publishing, ABG EPE Gladys Music/Universal Music Publishing. **Cross That Bridge** Written by David Abbinanti. Published by Ninna Mouse Music, Inc. **Don't Be Cruel** Written by Otis Blackwell, Elvis Presley. Published by Elvis Presley Music Susan Aberbach Trust (BMI)/Raleigh Music Publishing LLC (BMI), ABG Elvis Songs (BMI)/Universal Music Publishing. **Good Rockin' Tonight** Written by Roy Brown. Published by Brown Angel Music Publishing (BMI)/Wixen Music Publishing (BMI). **Guitar Man** Written by Jerry Reed. Published by Sixteen Stars Music, Horipro. **Hard Headed Woman** Written by Claude De Metruis. Published by Gladys Music Joachim Jean

Music credits continue on page 15



Watch Your Daughter Thrive at Notre Dame!

Walk-in
Wednesdays

Nov. 1 & Dec. 6
9:00 am



ACADEMY of
NOTRE DAME
de NAMUR

World-Class Independent
Catholic Education
All Girls • Grades 6-12
ndapa.org/visit



Waverly Heights Life Plan Community

**EXCEPTIONAL LIFESTYLE,
EXTRAORDINARY LIVING**

From life-long learning
programs, to lectures
to book clubs,
Your next chapter starts here.



610-645-8764
WAVERLYHEIGHTS.ORG



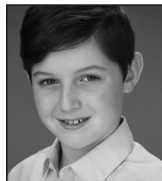
CAST



**Meredith
Beck**



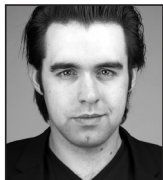
**Kelly
Briggs**



**Joey
Caroto**



**Chali
Cooke**



**Chris
Fitting**



**Tiara
Greene**



**Kara
Haller**



**James
Kern**



**James David
Larson**



**Christopher
McCrewell**



**Paul L.
Nolan**



**Lucas
Pastrana**



**Jenna
Pastuszek**



**Rebecca
Robbins**



**Ken
Sandberg**



**Hunter
Silverman**



**Edward C.
Smith**



**Asa
Somers**

WHO'S WHO IN THE CAST

MEREDITH BECK (*Ann-Margret/Jordanaire/Show Singer/Ensemble*) Walnut debut! Meredith is a Philadelphia-based theatre artist & private vocal coach. She has worked with BRT, Act II, MGR, BCP, Media, Gretna, BCCPA and 11th Hour, among others. Favorite roles include Nellie Forbush (*South Pacific*), Sally Bowles (*Cabaret*), Elsa Schraeder (*Sound of Music*), Martha Jefferson (1776), Eliza Doolittle (*My Fair Lady*) and multiple productions representing the legendary Mary Martin in her touring show *Merman & Martin Together Off-Broadway!* Meredith serves on Council for Actors Equity and is the founder/flautist of Celtic Trio, The Galway Girls! @thegalwaygirls Love to John. BFA Ithaca College www.meredithbeck.com @meredithashleybeck

KELLY BRIGGS (*Colonel Parker/Ensemble*) Originally from Bordentown, NJ, Kelly's Broadway credits include *Les Misérables* and *CATS*. He has also toured extensively with both productions. Regionally, Kelly has performed at the Media Theatre, Cohoes Music Hall, Surflight Theatre, Bucks County Playhouse, and others in over 40 productions. Kelly is also a Concert/Cabaret artist and received 11 Broadway World Awards, The New York Nightlife Award, Backstage Bistro Award and is inducted into the Bordentown Regional Hall Of Fame. Kelly is a graduate of the American Musical and Dramatic Academy. A huge thank you to everyone at Walnut Street Theatre for being so welcoming. www.kellybriggs.com

JOEY CAROTO (*Kid Elvis*) Joey is thrilled to be making his debut at WST! He is 11 years old and favorite credits include Gavroche in *Les Misérables*, Simba in *The Lion King* and Kristoff in *Frozen*. When he's not acting or singing, he loves playing video games, fishing and watching the Phillies. He would like to thank his family, especially his little sister Emma, as well as his teachers for the tremendous support! Special thanks to WST!

CHALI COOKE (*Betty/Jordanaire/Show Girl/Ensemble; Second Assistant Stage Manager*) is excited to be in this production of *Elvis – A Musical Revolution!* And to be back at Walnut Street Theatre where she made her regional theater debut in *Saturday Night Fever!* Most recently seen in: *Rent*: Media Theatre-Joanne; *Legally Blonde*: Walnut Street Theatre-Judge/"Courtney take your break"/ensemble. Chali is multifaceted as a commercial & T.V. actor, the founder of the life coaching business ICU Academy (@icu_academy), the Author of *En Route: Tools to Access Your Integrity*, and an amazing yoga teacher who teaches around the city and online. Connect with her here: @chalzz

CHRIS FITTING (*Dewey/Stage Manager/Ensemble*) makes his onstage debut at the Walnut after understudying the role of Tully in *Escape to Margaritaville*. Regionally, Chris has performed with the Fulton Theatre, Eagle Theatre, Media

Theatre, Candlelight Theatre, Scranton Fringe, and more. Favorite credits include Sonny Malone (*Xanadu*), Huey Calhoun (*Memphis*), and Bob Wallace (*White Christmas*). Temple University. Joyed it.

TIARA GREENE (*Sister Rosetta/Ensemble*) Official Walnut debut! Born and raised in Delaware County, Pennsylvania, Tiara is thrilled to perform close to home. Select regional credits—Playhouse on Park: *Bandstand* (Featured Ensemble); Walnut Street Theatre: *Escape to Margaritaville* (Marley u/s); Eagle Theatre: *The Wild Party* (Madeline True); Arden Theatre: *Into the Woods* (Witch u/s); 11th Hour Theatre Co.: *Bonnie and Clyde* (Governor/Trish); Candlelight Theatre: *Memphis* (Felicia), *Hairspray* (Motormouth Maybelle), *Beehive* (Gina/Aretha). All thanks to God, and thanks to her family and friends for their continued support! www.tiaragreene.com.

KARA HALLER (*Marion/Show Girl/Show Singer/Ensemble*) is so grateful to be making her Walnut Street Theatre debut! Broadway: *School of Rock*. National Tours: *School of Rock* (1st National), Disney's *Beauty and the Beast*. Select Regional: Paper Mill Playhouse, Ogunquit Playhouse, Ahmanson Theatre, Gateway Playhouse. TV: *The Blacklist*, *The Marvelous Mrs. Maisel*, *FBI*. Huge thanks to Take 3 Talent and endless love to Michael and Genevieve.

JAMES KERN (*DJ/Ronnie/Ensemble*) James is beyond excited to be making his Walnut debut with this incredible piece of history. Thank you so much to Brian Kurtas for bringing me on board and trusting me with all this fun stuff and the entire creative team! A graduate of the University of the Arts with an MFA from Wayne State University: most recently on stage in Hedgerows *The Pillowman*. I owe the world to my parents and want to thank them for their continued love and support. To my amazing wife who truly makes my world spin and to my newborn son, Asher, the little rapsallion.

JAMES DAVID LARSON (*Bill Black/Jerry/Ensemble*) National Tour: *Spamalot*, *The Buddy Holly Story*, *Twelfth Night*. Off-Broadway: *Into the Woods* (Roundabout Theatre Company), *Atomic* (Theatre Row). Selected Regional: *Ring of Fire* (Milwaukee Repertory Theater), *Luck Be a Lady* (Asolo Repertory Theatre), *Million Dollar Quartet*, *The Buddy Holly Story*, *Million Dollar Quartet Christmas*, *Ebenezer Scrooge's Big Playhouse Xmas Show* (Bucks County Playhouse), *The Other Josh Cohen* (Geva Theatre), *Too Marvelous for Words* (Florida Repertory Theatre), *The Hound of the Baskervilles* (Gulfshore Playhouse), *The Night Before* (freeFall Theatre), *25th Annual Putnam County Spelling Bee* (Oregon Cabaret Theatre), *Little Women* (Oregon Stage Works), *My Way* (Smithtown PAC). www.JamesLarson.co

WHO'S WHO

CHRISTOPHER McCREWELL (*Jackie Brenston/Prisonaire/Chuck/Reverend/Ensemble*) is extremely excited to make his WST debut!! He has had a summer filled with non-fictional characters: a Drifter in *Beautiful*, Booker T. Washington in *Ragtime* and now the ensemble of *Elvis – A Musical Revolution*. Christopher was also in the first national tour of *The Prom*, understudying and performing the roles of Barry Glickman, Principal Hawkins, and Sheldon Saperstein. Other favorite credits include *Children of Eden*, *Aspects of Love* and *Sister Act*. Always grateful to his family, friends and FSE for their continued love and support. For Dad. @chrismccrewell

PAUL L. NOLAN (*Vernon Presley/Ernie/Studio Executive/Ensemble*) has been performing on stage, in front of cameras and behind microphones on the right & left coasts and points in between since the Nixon administration. He is delighted to be returning to WST where he appeared most recently in previews of *The Best Man* in 2020. The pandemic closed that terrific production. Some other stage highlights: *The Mousetrap*, *August: Osage County*, *Of Mice and Men* and *The Birthday Party*. Film and TV credits include: *All Square*, *My One and Only*, *Ascension*, *The Wire*, *Signs*, *Ocean's 11*, *Homicide*, *Life on the Street*, and *Contact*. Want more PLN info – paulnolanactor.com

LUCAS PASTRANA (*Elvis Presley* is elated to be making his Walnut Street Theatre debut with this production of *Elvis – A Musical Revolution*. Off-Broadway: *Kinky Boots* (Harry; u/s Charlie). Regional credits include Chanhassen Dinner Theatre: *The Music Man*; Skylight Music Theatre: *Oklahoma!* (Curly), *Pippin* (Pippin), *Urinetown* (Bobby Strong), *Sweeney Todd* (Anthony). Instagram: @pastranaalucas

JENNA PASTUSZEK (*Dixie/Show Singer/Priscilla/Ensemble; Dance Captain*) (she/her): Fun fact: Jenna was named after character Jenna Wade on the TV show *Dallas*, notably played by Priscilla Presley. Previous WST credits: *Winter Wonderettes*, *Bad Jews*. Select NYC: *Smile* (Theatre Row), *The Incredible Fox Sisters* (New Ohio Theatre), *Single* (NYMF), *Joey & Ron* (Player's Theatre). Select Regional: *Side Show* (Media Theatre), *Diner* (Delaware Theatre Co.), *Because of Winn Dixie* (DTC), *44* (Bourbon Room Hollywood), *Evita* (Carbonell Award Nominee, Stage Door Theatre), *The Last Five Years* (Eagle Theatre). Her solo shows, *Get Happy!*, and *Me, Myself, & Barbra* were recently seen at Paper Mill Playhouse & Bucks County Playhouse. Co-Founder of Innovative Voice Studio. Graduate of NYU & UVA. @thejennap

REBECCA ROBBINS (*Gladys Presley/Ensemble*) is grateful to be returning to the Walnut after playing Gloria in *Rocky*, *The Musical* and Marie (aka the flying Fairy Godmother) in *Cinderella* last season. Earlier this year: 1812 Productions, Fulton

Theatre, Sacramento Music Circus, and Pittsburgh CLO. Broadway: *A Tale of Two Cities*, *The Phantom of The Opera* (also North American Tour). Walnut favorites: *The Little Mermaid* (Ursula), *Always...Patsy Cline* (Louise), *Legally Blonde* (Paulette), *Souvenir* (Florence Foster Jenkins), *Mary Poppins* (Mrs. Banks). Heartfelt thanks to Bernard, Mark, Brian, Jeff, and the cast, crew, and creative team behind *Elvis – A Musical Revolution*. Up next: Disney's *Beauty and The Beast*. Love to MFK. Proud cancer survivor. RebeccaRobbins.com or @rebrobbins.

KEN SANDBERG (*Scotty Moore/Glen/Ensemble*) WST debut! Ken is newly returned to Philadelphia after leaving for grad school in 2015. Recent productions include *Million Dollar Quartet* at the Media Theatre, *The Legend of Georgia McBride* at South Camden Theatre, *Pride and Prejudice* at Greenbrier Valley Theatre, and *Buddy! The Buddy Holly Story* which he has performed at Florida Studio Theatre, Music Theatre of Connecticut, Tuacahn Center for the Arts, and Maine State Music Theatre. When not on stage as an actor or musician Ken can be heard co-hosting the weekly podcast *Campfire Classics*. Ken is a proud member of AEA. "Always love and thanks to my partner Heather."

HUNTER SILVERMAN (*Kid Elvis*) is so excited to be making his hometown debut at the Walnut Street Theatre! Prior credits include *The Wizard of Oz*: (Mayor), *Matilda* (Bruce), *The Sound of Music* (Kurt), and *Orpheus* (Young Orpheus) at Philadelphia's own MacGuffin Theater & Film, and *Wendy's Story* (Peter Pan), *Willy Wonka Jr.* (Willy Wonka), and *Aladdin Jr.* (Genie) at Albert M. Greenfield School. When he is not acting, Hunter is a 7th Grader at Julia R. Masterman School and enjoys playing keyboard, guitar, bass and drums at The School of Rock Philadelphia. In his spare time, he enjoys reading, gaming, spending time with family and friends, as well as anything baseball, and Philly sports related. Special thanks and gratitude to all those who have helped him along the journey, especially his family, friends, teachers, and of course the incredible cast, crew and staff at WST. Instagram: @_huntersilverman_

EDWARD C. SMITH (*Roy Brown/Prisonaire/Jordanaire/Otis/Ensemble*) Edward enjoys life. He loves the theatre and how for the span of three hours one's disbelief is suspended, and you are transported to another place and time, where emotions are often expressed in song and living art moves through time and space, right before your very eyes, adorned with clever dialogue, colorful costumes, synchronized staging, imaginative sets, and mood lighting. Edward's first love is music and where much of his formal training lies. He also enjoys outdoor sports, such as softball and fishing.

WHO'S WHO

A consummate do-it-yourselfer, carpentry is also one of his favorite pastimes.

ASA SOMERS (*Sam Phillips/Frank Sinatra Ensemble*) Broadway: *Dear Evan Hansen*, *Next to Normal*, *Grey Gardens*, *Taboo*, *Dance of the Vampires*, *Rocky Horror Show*. Off-Broadway/Regional: *Fly By Night* (Dallas Theater Center); *Hedwig and the Angry Inch* (Jane Street, NYC, and Victoria Theatre, San Francisco); *Once Around the Sun* (Zipper, NYC); *Tallgrass Gothic* (Actors Theatre, Louisville). Asa also wrote librettos for the *Duck Dynasty Musical* (Rio Hotel, Las Vegas) and *Everyone Comes to Elaine's* (in development). His 10-minute play "*that Sweet D*" premieres this fall at Towne Street Theatre in LA. TV: "Billions," "Mr. Robot," "The Good Wife," and many others. Love to Ry and Carpenter. Insta: @asasomers

JEFF CALHOUN (*Director & Choreographer*) is a two-time Tony Award-nominated Director/Choreographer who's honored to be making his Walnut Street debut! Broadway: Disney's *Newsies* (Tony Award nomination for Best Director), *Bonnie & Clyde*, *Jekyll & Hyde*, *Grey Gardens*, Deaf West's *Big River* (Tony Award nomination for Best Revival of a Musical), *Brooklyn*, *Annie Get Your Gun*, *Grease* (Tony Award nomination for Best Choreography), *Tommy Tune Tonight*, and *The Will Rogers Follies*. Last year he was nominated for a Drama Desk Award for his direction of the Off-Broadway musical *Between The Lines*. He was also privileged to direct the legendary Maurice Hines in *Tappin' Thru Life*. Tours, Off-Broadway, and International: Dolly Parton's *9 to 5* (West End, US National Tour, Australia) Disney's *High School Musical 1 & 2*. Mr. Calhoun is an Associate Artist at The Ford's Theater in Washington D.C. He also serves on the Board of Directors for Covenant House International. He's currently developing the first musical written for and about a deaf character with Deaf West Theater. Feel free to follow Jeff on Instagram: @thejeffcalhoun

KIKAU ALVARO (*Associate Director*) is an Associate Professor of Musical Theater and the Interim Dean of the Ira Brind School of Theater Arts at University of the Arts. He is thrilled to have this amazing opportunity to work with Jeff and the team on this production, especially after being a lifetime Elvis fan. Favorite credits include *The Full Monty* (Transcendence), *A Gentleman's Guide...*, *Atlantis*, and *The Wiz* (Virginia Repertory Theatre), *Fun Home* (Cadence), *The View Upstairs* (RTP), *Big River* (TheatreWorks Silicon Valley), and *Anything Goes* (Cabrillo Stage). Kikau lives in South Philly with his husband Derrick, and their puppy, Bognes. Follow his journey @kikautown.

CHRIS BURCHER (*Musical and Vocal Direction*) is excited to be starting his fourth season on the Walnut's Mainstage with *Elvis - A Musical Revolution*. Previous favorites include *Young*



CLIENTS CAN'T HELP FALLING IN LOVE WITH OUR SERVICE

Accounting & Tax | Property & Casualty
Retirement & Investment | Valuation
Risk & Advisory | Employee Benefits
Life Insurance | Healthcare Consulting
Human Capital Management
Private Equity Advisory | Cyber Security

John Fidler

215.827.7476 | john.fidler@cbiz.com



Your Brand
Hand Delivered
to Your
Target Audience!

**Contact us today
to reserve space in
PLAYBILL.**

Your Sales Representative:

Frankie Reese
freese@playbill.com
646.751.4153

PLAYBILL®

WHO'S WHO

Frankenstein, Beehive, Disney's The Little Mermaid, Always... Patsy Cline, and Cinderella. Based in Philadelphia, he has also music directed at Broadway at Music Circus (*Cinderella*), Bucks County Playhouse (*Kinky Boots*), Rutgers-Camden, Arcadia University, and the WST for Kids series, where his musical arrangements have been heard in *A Christmas Carol*. He is a graduate of the University of Pennsylvania. Thank you to Bernard, Mark, and the entire Walnut staff. Love to Mom, Dad, and Maura.

ROMAN TATAROWICZ (*Set Design*) Walnut: *Rocky, The Musical, Cat on a Hot Tin Roof, Blithe Spirit, The Best Man, A Woman of No Importance, The Curious Incident... , The Humans.* In the Studio Space: *Thurgood, Oleanna, Meteor Shower, Souvenir, Jerry's Girls, The Other Place, Red, I Love a Piano.* Selected Off-B'way: *The Banana Monologues* (Acorn Theatre); *Honky, Roses in December* (Urban Stages); *Mother Courage, The Importance of Being Earnest, Dames at Sea, The Threepenny Opera* (Jean Cocteau Rep.). Many Off-Off-B'way including *Bee-Luther-Hatchee* (Audelco Award nom). Regional credits: Capital Rep., Merrimack Rep., Queens Theatre in the Park, Florida Studio Theatre, Azuka Theatre, Act II, InterAct, Bristol Riverside, People's Light, Pa. Shakespeare Festival, Delaware Theatre Company and ETC (Santa Barbara). Member United Scenic Artists Local 829. tatarowicz.com

MARY FOLINO (*Costume Design*) is currently Arcadia University's Costume Shop Manager, having previously worked as the Walnut's Costume Shop Manager, and as the Costume Director of the Milwaukee Repertory Theater. Favorite WST designs include *Holiday Inn, A Comedy of Tenors, Young Frankenstein, Shrek, A Woman of No Importance, Beehive,* and Disney's *The Little Mermaid*. Many thanks to Bernard and the WST family, all my collaborators on this piece, and the amazing costume and wardrobe staff!

MICHAEL GILLIAM (*Lighting Design*) Broadway: *Bonnie and Clyde, Brooklyn, Big River, Stand-Up Tragedy.* West End: *Gershwin Alone, Off-Broadway: Cagney The Musical, Mr Joy, The Best Is Yet To Come, Striking 12, Blue, End of the World Party, Zooman and the Sign, Menopause the Musical.* National Tours: *Spamilton, Looped, Peter Pan, Brooklyn, Guys and Dolls, Big River.* Extensive work in many of the regional theatres across the United States, Awards: Los Angeles Ovation Awards, Dramalogue Awards, Garland Awards, San Diego Critics' circle awards and the 1999 Career achievement award from the Los Angeles Drama Critics Circle

ED CHAPMAN (*Sound Design*) Happy to be returning. Walnut Street Theatre: Disney's *The Little Mermaid, Shrek, Young Frankenstein, In the Heights, Mary Poppins, Wizard of Oz, Annie.* Broadway: *Leopoldstadt* (Associate Designer),

Ink (2019 Tony nomination Best Sound Design, Associate Designer) and *Travesties* (2018 Tony nomination Best Sound Design, Associate Designer). Touring Productions: Disney's *The Little Mermaid, A Christmas Story, How the Grinch Stole Christmas, Guys and Dolls, The Producers.* Other award-nominated work: *Holiday Inn* (2018 SALT Award nomination), *Mamma Mia!* (2016 Berkshire Theatre Award nomination).

CAITE HEVNER (*Projection Design*) Broadway: *In Transit; Derren Brown: SECRET; Harry Connick Jr., A Celebration of Cole Porter.* Select New York: *Sweatshop Overlord, NYTW* (Lortel nomination); *Between the Lines, Tony Kiser Theatre* (Drama Desk nomination); *Bella Bella, MTC; Collective Rage, MCC; Ugly Lies the Bone, Roundabout Underground; Fidelio, Heartbeat Opera; Parade and The Scarlet Pimpernel, Manhattan Concert Productions/Lincoln Center.* Select Regional: Alley, Arena, Alliance, Baltimore Center Stage, Dallas Theater Center, Guthrie, Kennedy Center's Broadway Center Stage, Long Wharf, McCarter, MUNY, Pasadena Playhouse, Seattle 5th Avenue, TUTS, Woolly Mammoth. Video Coordinator for BC/EFA's Broadway Bares since 2018. USA829 Eastern Region Board Member Representative, Co-Chair of Respectful Workplace Committee. www.caitedesign.com Instagram: @caitehevner

ELIZABETH HAROIAN (*Stage Manager*). Thrilled to be back with WST for a third season! Select stage management credits: *Cat on a Hot Tin Roof, R&H's Cinderella, and Rocky: The Musical* (WST), *Further Than the Furthest Thing* (NYU Tisch), *Symphonie Fantastique* (Basil Twist), *The Pirate La Dee Da* (ATC), *The Secret Garden and Sister Act* (NYU Steinhart), *Grease* (New London Barn Playhouse), and *Richard III* (Juilliard). Last year, Liz was in Saudi Arabia managing a truly magical show with five international illusionists. She has worked with many academic programs including NYU Tisch, The Juilliard School, NYU Steinhart, Atlantic, and ART/Harvard. Amid all the chaos remember to have fun!

MICHELE BEGLEY (*Assistant Stage Manager*) is so excited to be returning to the Walnut! She started out here as a Stage Management Apprentice for the main stage under Lori Aghazarian and Angela Cucco Jenkins in the 2017-2018 season. Since then, she has held a resident position at the Bristol Riverside Theatre, both as ASM and PSM. Other regional credits include: Theater at Monmouth, Penobscot Theatre Company, First Stage, and The Barnstormers Theatre. Special thanks to the cast, crew, apprentices, production, and creative staff who make this show possible. Proud member of AEA. Enjoy the show!

SIOBHÁN RUANE (*Director of Production*) This is Siobhán's 11th season at the Walnut. With over 20 years in the business, Siobhán has worked

WHO'S WHO

internationally as a Production Manager and Stage Manager. Previously, Siobhán held the faculty position of Stage Management Advisor at Florida State University's School of Theatre. Additional credits include Cirque du Soleil, Norwegian Cruise Line, Cirque Productions, and various regional theatres. Siobhán holds an undergraduate degree from Rutgers University, an MFA from the University of Delaware, and is (proudly!) originally from the Jersey Shore.

BRIAN KURTAS, CSA (*Associate Artistic Director*) has been associated with the Walnut Street Theatre since 2007. He began his career here as a performer and in the professional apprenticeship program and has since dedicated himself to bringing artists together. He now serves our artists and audiences in the various capacities of casting, directing, programming, and literary management, as his function is to identify the highest quality of artists for our historic theatre. His vision behind unforgettable live experiences and storytelling has become a creative solution from the stage to the screen - He spent 4 seasons as the Executive Producer of Gretna Theatre, has worked on television networks and films including TLC and HGTV, and helped create events and entertainment for brands such as T-Mobile and Walmart while at Live Nation. Originally from Lancaster, Brian is a proud Temple alum and a member of the Casting Society of America.

MARK D. SYLVESTER (*Managing Director*) Mark is proud to be celebrating his 30th season at the Walnut. His extensive career has spanned Summer Stock to Broadway as an actor, stage manager, box office treasurer, theatre manager, marketing and public relations director and general manager. After several years working with commercial theatre, he has devoted his career to non-profit theatre companies since 1987. To date, Mark has been associated with more than 500 stage productions. An avid collector of musical theatre recordings, his collection contains over 3,500 cast albums from around the world. Widely regarded as a theatrical marketing expert, Mark lectures and consults with organizations internationally. He has served on several boards including seven years with the National Alliance for Musical Theatre where he now holds the honorary position of Board Emeritus and the Advisory Committee of Samuel French, the international play publisher and licensing company. With Bernard Havard he co-authored the book *Walnut Street Theatre*. Since he joined the Walnut in 1994, it became the most subscribed theatre company in the world.

BERNARD HAVARD (*President and Executive Producing/Artistic Director*) *Vox Populi* (The Voice of the People) was written on the Walnut Playbills in the 1800s. Whenever the Walnut has strayed from a populist program, the theatre has

gone bankrupt. When I came here 41 years ago, we had no programs and no audience. Today we enjoy one of the largest subscription bases of any theatre in the world. So, my thanks to our loyal audience and a warm welcome to newcomers who enjoy and believe in what we do. I admire the artists who dedicated their lives to the theatre and the Walnut, particularly. Our theatre is a non-profit 501-C3 institution, and we rely on contributed income to extend our reach into the community. Last season we reached more than 26,600 students in our city schools. We have 39 trustees who give their time, wisdom, and contributions to help guide this historical treasure. I came to the Walnut in 1982, and I am as excited now about our future as I was in the beginning. My heartfelt thanks to all who enter this theatre. For my biography, go to About Us on our website at WalnutStreetTheatre.org.

MUSIC CREDITS continued from page 8

Aberbach/Raleigh Music Publishing, Gladys Music Elvis Presley Enterprises LLC, ABG EPE Gladys Music/Universal Music Publishing. **Heartbreak Hotel** Written by Axton, Durden, Presley. Published by Sony Music Publishing. **Home on the Range** Written by Brewster M. Higly (1911). Public Domain. **Hound Dog** Written by Jerry Leiber, Mike Stoller. Published by Sony/ATV Songs. **Jailhouse Rock** Written by Jerry Leiber, Mike Stoller. Published by Sony/ATV Songs. **Just a Closer Walk With Thee** Written by Martha J Lankton (1915). Public Domain. **Just Walkin' in the Rain** Written by Johnny Bragg, Robert Stanley Riley. Published by Golden West Melodies, Inc./Warner Chappell Music Publishing. **Love Me Tender** Written by Elvis Presley, Vera Matson. Published by Elvis Presley Music/Raleigh Music Publishing, Elvis Presley Music, ABG Elvis Songs/Universal Music Publishing. **My Happiness** Written by Betty Blasco, Barney Bergantine. Published by Happiness Music Corp/Warner Chappell Music Publishing. **My Love Is Always There** Written by David Abbanti. Published by Ninna Music Music, Inc. **Mystery Train** Written by Herman Parker, Sam C. Phillips. Published by Mijac Music (BMI)/Sony/ATV Music (BMI), Unichappell Music. **O Solo Mio** Written by Eduardo di Capua (1917), Alfredo Mazzucchi (1972). Public Domain. **Old MacDonald** Lyrics from the film "Double Trouble". Written by Warren Nadel. Published by Nadel Music/Raleigh Music Publishing LLC (BMI). **Peace in the Valley** Written by Thomas A. Dorsey. Published by Warner Tamerlane Publishing. **Ready Teddy** Written by Robert Blackwell, John Marascalco. Published by Elvis Presley Music Susan Aberbach Trust (BMI)/Raleigh Music Publishing LLC (BMI), Robin Hood Music Co. (BMI), Sony Music Publishing. **Rocket 88** Written by Jackie Brenston. Published by Uni-Chappell Music. **Shake That Tambourine** Written by Florence Kaye, Bernie Baum, Bill Giant. Published by Elvis Presley Music/Raleigh Music Publishing LLC (BMI), Elvis Presley Music, ABG Elvis Songs/Universal Music Publishing. **Strange Things Happening Every Day** Written by Sister Rosetta Tharpe. Published by EMI Music Publishing. **Suspicious Minds** Written by Mark James. Published by Sony/ATV Songs LLC. **Swing Low Sweet Chariot** Written by Alec Gould. Published by EMI Music Publishing. **That's All Right** Written by Arthur Crudup. Published by Crudup Music (BMI)/Unichappell Music (BMI). **That's When Your Heartaches Begin** Written by Fred Fishers, William Hill, William Raskin. Published by Sony Music Publishing. **This Train Is Bound For Glory** Traditional, 1922. Public Domain. **Trouble** Written by Jerry Leiber, Mike Stoller. Published by Sony/ATV Songs. **Viva Las Vegas** Written by Jerome Pomus, Mort Shuman. Published by Warner Tamerlane, Pomus Songs Inc, Mort Shuman Songs LLP. **Witchcraft** Written by Dave Bartholomew, Pearl King. Published by Sony/ATV Songs. **You're The Boss** Written by Jerry Leiber, Mike Stoller. Published by Sony/ATV Tunes LLC.

WALNUT STREET THEATRE
825 Walnut Street, 215-574-3550

BOARD OF TRUSTEES

President.....**Bernard Havard**
Chair.....**Francis J. Mirabello, Esq.**
Immediate Past Chair.....**Scott Rankin**
Chairman Emeritus.....**Louis W. Fryman, Esq.**
Chairman Emeritus.....**Matthew Garfield**
Chairman Emeritus.....**John D. Graham**
Vice Chair/Secretary.....**Patrick Mullen**
Treasurer.....**Robert L.B. Harman**

Jeffrey Ferro
John Fidler
Jack R. Garfinkle, Esq.
Audrey Merves
Richard A. Mitchell, Esq.
Tanya Ruley-Mayo

Gene Schriver
Daniel J. Schuller
James D. Scully, Jr.
Ellen Tobie
David Wyher

ALUMNI TRUSTEES

Ashok N. Bakhru, Bruce Belzak, George M. Chamberlain Jr., Thomas J. Coultres, Louis J. D'Ambrosio, Joseph E. Ellis Sr., Barry Genkin, Terry Graboyes, Ramona Gwynn, Denise Daher Hodgson, Jeremy D. Johnson, Kenneth E. Kirby, Theresa E. Loscalzo (Esq.), Craig R. MacQueen, Kyle Anne Mickiff, Ann Marie Richter, Renee H. Rollin, Keith D. Schneck, Martin W. Spector, James M. Toley

HONORARY MEMBERS

Ms. Carole Haas Gravagno,
Hon. Mark Squilla, Ms. Lily Tomlin

WALNUT STREET THEATRE STAFF

ARTISTIC

President and Producing Artistic Director.....**Bernard Havard**
Associate Artistic Director.....**Brian Kurtas**

ADMINISTRATION

Managing Director.....**Mark D. Sylvester**
Company Manager.....**Daniel Ludwig**
Controller.....**Michael S. Armento**
Assistant to the Controller.....Kristen Lamb
Management Assistant.....Christina Taliua
Audience Services Manager.....**Angelia Evans**
Associate Audience Services Manager.....Katrina Dagenais
Facilities Manager.....**Bruce Myers**
Assistant to the Facilities Manager.....Tony Sample
Facility Services.....Phillip Glenn, Demetrius Hill,
Camielle Johnson, Jonathan Martin,
Charles Phillips, Victoria Robinson

DEVELOPMENT

Director of Development.....**Scott Blacker**
Development Associate.....Sharon Hoffberg
Development Apprentice.....Thomas Smith

EDUCATION

Director of Education.....**T.J. Sokso**
Associate Director of Education.....Amanda Pasquini
Education Programs Manager.....Maya Chester Ziv
Education Apprentice.....Jameka Wilson
Teaching Artists.....Dave Allison, Julianna Babb,
Hallie Berger, Elliot Davis, Walter Dodd, Andrea Cardoni,
Hannah Catanoso, Nora Gair, Kelsey Hodgkiss, Nicole
Renna, Kennedy McAlister, David Pica, Sharon Geller,
Annette Kaplafka, Brian Kurtas, Donovan Lockett, Lindsay
Marcus, Taylor J. Mitchell, Charlotte Northeast,
Nick Parker, Domenica Passio, Faith Sacher,
Seraina Schottland, Leah Senseney, Connor Shields,
Devon Sinclair, Arielle Sosland, Grant Uhle

MARKETING

Director of Marketing and Public Relations.....**Stephen Rapp**
Communications and
Audience Engagement Manager.....Mike Hogue
Marketing Associate.....Jennifer Epstein
Marketing and Public Relations Apprentice.....Tessa O'Donnell
Box Office Treasurer.....**Rick Dougherty**
Assistant Box Office Treasurer.....Tom Brzozowski
Ticketing Services Manager.....**Jeffrey Berry**
Associate Ticketing Services Manager.....Sonja Stornes
Ticketing Services and Group Sales Coordinator.....Celia Hegarty
Ticketing Services Apprentice.....Shaina Egan
Ticketing Services Agents.....Jason Boyer, Shaun Furter,
Richard Ginsberg, Maryann Kuzan, Christopher LeVere,
Anne Mailey, Keeghan McLane, Marissa Molek,
Leslie Monaco, Luke Solacoff, Madison Williams
Outbound Sales Manager.....Diana Urdinaran
Outbound Sales and Telefunding.....Anne Marie Borget,
Camille James, Evan Majorga

PRODUCTION

Director of Production.....**Sioh n Ruane**
Assistant Production Manager.....Megan Lampron
Production Technical Supervisor.....Matt DeMascolo
Production Apprentice.....Jess Fowler
Stage Managers.....Elizabeth Haroian, Michele Begley
Dance Captain.....Jenna Pastuszek
Second Assistant Stage Manager.....Chali Cooke
Stage Management Apprentices.....Mackenzie Seewagen,
Matthew Owitz
Technical Director.....**Brian Froomjian**
Assistant Technical Director.....Eli Marsh
Scene Shop Assistant.....Tyler Bogue
Head Carpenter.....Jon Wheeler
Carpenters.....Kerrin Frank, Charlie Margies
Carpentry Apprentices.....Carter Sinquefield, John Marsella
Scenic Charge.....Leslie Curd
Scenic Artists.....Thomasin Parnes, Lauren Sellers
Scenic Apprentice.....Lucy Pickering
Properties Manager.....**Shannon O'Brien**
Properties Associate.....Leighann Westermeyer
Head Properties Artisan.....Natalie Reichman
Properties Artisan.....Matthew Barth
Properties Apprentices.....Kysten Bailey, Kirken Craven,
Tara Cunniffe

Costume Shop Manager.....**Natalia de la Torre**
Assistant Costume Shop Manager.....Anya Loverdi
Draper and Costume Associate.....Chloe Swidler
Costume Apprentices.....Noel Morales, Loren Smither
Stitchers.....Janet DeCoster, Gretchen Ellis,
Francesca Schnalke, Abi Stenner
Wig and Make-Up Coordinator.....Claire Waid
Wig and Wardrobe Apprentice.....McKenzie McClure
Lead Dresser.....Alison Levy
Dressers.....Andy Martinez
Costume Stock Coordinator.....Elizabeth McNamara
Stage Crew
Head Carpenter.....Mick Coughlan
Head Electrician.....Amber Faulhaber
Head Flyman.....David Cain
Head Sound.....Adam Orseck
Head Props.....Valerie Bannan
Seasonal Assistant Sound.....Ryan Erlichman
Seasonal Assistant Lighting.....Kathryn Morgan
Stage Crew Apprentice.....Victoria Sills
Projection Content Associate.....Antonia Kogan
Projection Content Assistant.....Sydney Dye
Projection Associate.....Sarah Goodman



Actors' Equity Association (AEA), founded in 1913, represents more than 45,000 actors and stage managers in the United States. Equity seeks to advance, promote and foster the art of live theatre as an essential component of our society. Equity negotiates wages and working conditions, providing a wide range of benefits for its members, including health and pension plans. AEA is a member of the AFL-CIO, and is affiliated with FIA, an international organization of performing unions. The Equity emblem is our mark of excellence. actorsequity.org



UNITED SCENIC ARTISTS REPRESENTS DESIGNERS FOR THE AMERICAN THEATRE



MUSICIANS REPRESENTED BY THE AMERICAN FEDERATION OF MUSICIANS



BACKSTAGE EMPLOYEES AND SCENE SHOP EMPLOYEES ARE REPRESENTED BY THE INTERNATIONAL ALLIANCE OF THEATRICAL STAGE EMPLOYEES. (I.A.T.S.E.)



The Director/Choreographer is a member of the **STAGE DIRECTORS AND CHOREOGRAPHERS SOCIETY**, a national theatrical labor union.



The mission of the Walnut Street Theatre Company is to sustain the tradition of professional theatre and contribute to its future viability and vitality. It does so through the production and presentation of professional theatre; the encouragement, training, and development of artists; the development of diverse audiences; and the preservation and chronicling of its theatre building, a National Historic Landmark.



Independence STARTS HERE!

Walnut Street Theatre is a member of the Greater Philadelphia Cultural Alliance, Citizens for the Arts in Pennsylvania, and the League of Historic American Theatres. Walnut Street Theatre receives state arts funding support through a grant from the Pennsylvania Council on the Arts, a state agency funded by the Commonwealth of Pennsylvania.



Accessibility Equipment, Training and Marketing provided by Independence Starts Here, the statewide cultural accessibility program of VSA PA/Amarylhis Theatre Co., jointly led in different regions in PA by cultural partners in that region. In Greater Philadelphia, Independence Starts Here is jointly led by Art-Reach, Inc.



ART-REACH

Walnut Street Theatre receives additional season operating support from Actors Equity Foundation, and Independence Foundation.



Access2Walnut Program graciously funded by PNC Arts Alive in Partnership with Art Reach.

COMING ATTRACTIONS AT THIS THEATRE!

MAINSTAGE

Our 2023–24 Season includes

- *Disney's Beauty and the Beast* (Starts Nov. 21, 2023)
- *Edward Albee's Who's Afraid of Virginia Woolf* (Starts Jan. 9, 2024)
- *Groucho: A Life in Revue, the Musical* (Starts Feb. 13, 2024)
- *Beautiful – The Carole King Musical* (Starts March 26, 2024)

Buy a subscription or individual tickets at **215-574-3550**,

WalnutStreetTheatre.org
or Ticketmaster.com, 800-982-2787

WST FOR KIDS

- *Charles Dickens' A Christmas Carol* (Dec. 2–17, 2023)
- *Madagascar Jr.* (April 13–May 5, 2024)

WALNUT STREET THEATRE SCHOOL

Contact us about our current classes and the Fall 2023 semester.

Call 215-574-3550, ext. 510
or register online at walnutstreettheatre.org

THANK YOU TO OUR GENEROUS SUPPORTERS!

Walnut Street Theatre wishes to express gratitude to the following individuals, corporations, foundations, and government agencies for their generous contributions in support of America's Oldest Theatre

FORREST SOCIETY (\$25,000+)

Hamilton Family Charitable Trust	Arthur Murray's Rising Star World Foundation	PECO
Bob & Louise Harman	PA Department of Community & Economic Development	PNC Bank
The Hearst Foundations, Inc.	PA Department of Education	Scott & Sharon Rankin
Syde Hurdus Foundation		Louis and Bessie Stein Foundation
Philip & Margaret Masters		Fund #2c.

BOOTH SOCIETY (\$10,000+)

C&N Bank	Horace W. Goldsmith Foundation	Nationwide Private Client
CBIZ, Inc.	Bernard Havard & Judy Capuzzi Havard	The Neag Foundation
Disney Worldwide Services	Ken & Nancy Hellendall	Pennsylvania Council on the Arts
Educational Opportunities, LLC.	Independence Foundation	Royer Cooper Cohen Braunfeld LLC
Essential Utilities, Inc.	Johnson & Johnson	Gene Schriver
Jeff & Janie Ferro	Johnson Kendall and Johnson Inc.	James & Marlene Scully
Fulton Bank	The McLean Contributionship	Roger & Kathi Smith
Matt Garfield	Francis & Marianna Mirabello	Mark D. Sylvester
Garfield Refining, LLC	Richard A. Mitchell & Marna Carlton	USLI
GLOBO		Joe & Kim Villani
Herman Goldner Co., Inc.		

BARRYMORE SOCIETY (\$5,000+)

Bank of America	Anne & Philip Glatfelter III Family Foundation	The Patricia Kind Family Foundation	Pennsylvania Lumbermens Mutual Insurance Company
Dan & Reeve Benau	The Haley Foundation	William M King Charitable Foundation	Philadelphia Insurance Companies
Blank Rome LLP	Independence Blue Cross	Walter Kissel	Dr. Mitchell Rodman
Lee Brooks	Iron Hill Brewery	Joseph & Peter Lomax	The Ethel Sergeant Clark Smith Memorial Fund
Brotherston Homecare	IVY Rehab	Sandie Mather	Spark Therapeutics
Drs. James Byers & Stephanie Chuipek	Jane James Charity Fund of the Princeton Area Community Foundation	Edward & Regina J. Mitchell	TD Charitable Foundation
Daniel Comer	Grant & Nancy Karsner	Maureen E. Molloy & Stan Patrick & Jacki Mullen	UHS of Pennsylvania, Inc
Ruth Fausak		Pat's King of Steaks, LP	
Dennis & Jennie Franklin			

CUSHMAN SOCIETY (\$2,500+)

Archer & Greiner	Kathy & Dave Hychalk	Robert Peter Miller	Rowland & Elaine Smith
Baker Tilly US, LLP	Thomas Jefferson University	Montgomery Family Charitable Fund	Jesse W. & B. Lois Stuart
Jean Berg	Troy Johnson	Drs. Jonni & Roger Moore	Marlene & Joe Testa
Bob & Cheryl Carfagno	Justamere Foundation	Christian & Noelle Noyes	Dr. Alan & Edye Twer
Estate of Philip F. Drach	Brian Kurtas & Jason Ketelsen	NTIS/MDPINS	Margaret & Rick Volpe
Timothy & Jane Duffy	Ken & Elaine Kirby	PA Distribution	Stephanie Ward & Paul Merollo
William Faris	Jane Lane	Parkway Corporation	Ruth Anne & David Woolsey
John & Janette Fidler	Ginny & Gordon Lapinski	Lanny & Ann Patten	WSFS CARES Foundation
Rhoda & Louis Fryman	Paul J. Marcotte & Karen A. Brown	Robert & Terry Patterson	Anonymous (3)
Patrick & Shelly Guise	Roberta Martin	Pugliese Associates	
Brandon Havard	Jack Miller Family Foundation	Ruth & Vince Redes	
Charles Horn		Christopher Ritchie	
Clara Huntzinger			

JEFFERSON SOCIETY (\$1,500+)

Susan Adamczyk	Drs. Bruce & Toby Eisenstein	James Herman, Esq. & Brenda Lee Eutsler, Esq.	Sharon & John Payne	Ellen Tobie & Larry Gilberti
Paul M. & Mary Lee Anderson	Anthony & Laura Fiorenza	Denise D. Hodgson	Rev. Lucy Pierre	Tompkins Insurance
Dr. Sucha & Mr. Michael Asbell	Jane & David Galli	Henry & Paula Hollencamp	Jack & Hermene Potts	Lori & Robert Scott Uhl
Robert J. Bowen	Jack & Ellie Garfinkle	Jesse Jones	Bruce & Cindy Rangnow	Miguel Velez & Catherine DeGroot
Roger Braunfeld	Larry & Nancy George	Thomas & Angela Kay	Robert & Marilyn Rubin	Joyce Seewald Sando
Nancy Brodie	James & Wendy Gerber	Mary Kozar	Keith Schneck	Carl Schoenborn
Michael J. & Alice L. Brown	Katherine Glaser	Mary H. Ladd	Carl Schoenborn	Kathy & Don Shannon
Kathryn Brunner	Priya Gor & Darius Sholevar	Abbie Lampe	Lee & Roy Shubert	Rita A. Silvestri
William & Joann Butler	Ron & Sandy Gould	Dr. Morton & Rhea Mandell	Dave & Chris Stanton	Dave & Chris Stanton
Joseph & Suzanne Calabro	John & Sue Hammer	Mitts Law LLC	Dr. Frank & Lucille Stearns	Dom Stellato
Wendy & Joseph Casillo	Tom & Rosemary Hampton	Steven & Deborah Mongiardo	Mr. & Mrs. Richard T. Taylor	Jim & Irene Tholey
Virginia R. Cragg	Kathryn S. Hayes & Victor J. Tortorelli	Mario & Rosemarie Nicolais		
Vic & Eva Dawson	Gail Heinemeyer	Eileen Parsonage		
Allison & Roy DeCaro		Parx Casino		

KEMBLE SOCIETY (\$1,000+)

Matthew & Megan Abbott	Kimberly & Walter Cwiatniewicz	Marguerite & Christopher Hamilton	Dolfinger-McMahon Foundation	Robert & Dottie Roush
The A Cappella Project Philadelphia	Drs. Michael B. Dabrow & Manette K. Fine	Linda Harvey	Jeanette & Richard Merion	John & Lauren Sacks, Property Management Redefined
Raymond & Mary Alimenti	Mary Dauphinais & Thomas Kenney	Lynda & David Herendeen	Jim & Mary Ann Miles	Stephen M. Sader
Marylee & Stuart Alperin	William P. & Susan P. Degler	Gillian T. Herschman	Joseph E. Miller, Jr. Family	Ellen Schwartz & Jeremy Siegel
Will Anderson	Sam Driban & Marilyn Neuhauser	Robert Hess	Patrick Moeller	Robin M. Sherwood & John Zimmerman
Mrs & Mr. Emma Beckers	Dennis Dunlap	Alice Irene Hudson, In Memory of Lee Hudson	Gerard Mooney	William R. Snell, Esq.
Joseph & Barbara Bernert	Robert J. Eberle Jr.	Becky & Eric Hunt	Kenneth Morton	Grace Spampinato & Edward John Charlton
Ronald & Dolores Bowlan	Jeff & Lyn Evans	Tom & Jo Hyden	NJM Insurance Group	Lynne Delanty Spencer
David & Janet Breskman	Kalman & Suzan Fine	Julie & Jerry Jacobs	Nancy Nolan	Regina & DJ Sukanick
Tracy A. Broomall	Michelle Franklin	Richard Johnson	NRG Energy, Inc.	Mr. & Mrs. Sylvan Taub
Jeffrey & Diane Bush	The Fox Foundation, In Memory of Rex & Carol Fox	James T. Johnston, Sr.	Thomas P. Obade, MD	Frank & Fran Urso
Calabrese Charitable Fund - Christopher J. Calabrese & Cathleen A. Calabrese	Susan M. Garber	Joy Karsner & Brian Barton	Stuart & Carol Ockman	Peter & Viviana Van Derlin
Mayor Edward & Pamela Campbell	Ed & Vaia Gilchrist	Holly Krause & Family	Hayler, Robbie & Meighan Osborn	Cathy & Frazier Van Velsor
Campus Apartments	Chris & Margie Giles	Joseph & Andrea Leahy	Joseph Ostaszewski	Richard Volpe
George M. Chamberlain	Jack & Pat Graham	Beverly & Stephen Levin	Deborah Ott & Angel Macasieb	Marion M. Walter
George Chmielewski	Annamarie Hafer & Jake Oddo	Carol & John Little	Richard M. Parison, Jr.	Timothy & Leora Wile
Rodney Comegys	Joe & Otti Hallinan	Michael & Denise Marchioli	Marcia & Don Pizer	John Sacks-Wilner
Christopher Console		Andrew & Cheryl Masterman	Wayne & Karen Ranbom	Anonymous (2)
		Patrick McGinley	Kevin A. Roach	
		Pat & Harold McIlwain	Ann Robinson	
			Drs. Brad & Elizabeth Robinson	
			Leonard M. Rosenfeld	

PRODUCING ANGELS (\$500+)

Gerry Abelson & June Idzal
Actors' Equity Foundation
Roseann & Edward Adamczyk
George Ahern
Duane Amendola
Janice Baldwin
Mark Barrett
Rena & Sam Barnett
Mary Barry
Bruce C. Belzak
Amy & Tom Bohner
Janet Boris
Andrea Bowers
John & Linda Braceland
Donna Britt
Carol E. Brown
Mary & James Brown
Fusun Bubernack
Kaye Bunkin
Yvonne & Bruce Burgess
Christopher & Percy Burks
Bransby & Margaret Bushey
Natalie Caruso
Vincent Caruso
Marcy A. Chartrand
Jane M. Cohen
Dr. Todd & Wendy Cohen
Comcast Corporation
Mr. & Mrs. G. Sterling Coyne II

Richard & Diana Crean
Tom & Sue Crop
Cumberland Advisors
Gail W. Dillon
Susan DiPaolo
Richard Dougherty
Dr. Charles & Brenda Driben
Patrick & Dorothy Egan
Dr. Beverly Emanuel
Arthur & Eileen Etchells
Jeffrey Etinger
Sean & Amy Fahey
Anne M. Farrington
Bill & Karen Fisher
Joel & Carol Fleisher
Brandon Ford
Elizabeth Freeman
Rick & Julie Frost
Nicole Fryer
Tong Ming Fu
Robert Gilliam
Stephen Glauzel
Elizabeth Glowacki
Arlene Goldberg
The William Goldman
Foundation
Gail & Samuel Goldstein
Judith Guise
Ramona Gwynn

Nancy Hobbie & Drew Bastian
Sharon Hoffberg
Kathy Hoffman
Tom & Joyce Howley
Bruce & Alice Hudson
Robert & June Hudson
Jim & Carol Hunsicker
Dr. Charles Intenzo, In Memory
of Rebecca Capuzzi
Ginny & Frank Jackson
Dr. Gerard & Judith Johnson
In Memory of Anne Jones
Robert W. Jung
Marcia & Ned Kaplan
Norma Kelly
Gerhart & Anne Klein
Charitable Fund
William & Elaine Kline
Charles & Lucinda Landreth
Alexis Langella
Edward & Carolyn Larkin
Andrew & Julia Leader-Smith
Greg Liddle
Rafael & Carol Lissack
David Long
Richard & Kathleen Lowry
William Lowry
Patricia Lukaszow
Vanessa Mapson

Michael & Sam Markovitz
Jonathan Marmon
Debbie & Elliott Maser
Stu & Sandy McGee
Carol & Steve McKinley
Elyn McMullin
Merck & Co. Inc
Kyle Anne Midkiff
Frances Miller
Majiorie Miller
Rick Moog & Pat Martin
Michael & Karen Morgan
Sandy & Todd Murray
Emma Nashner
John Oates & Nikki Beden
Joan Palitz
Matthew Pettigrew
Frank Pittner
Marc Platitzky
Patricia H. Polinsky
Patricia Pomeranz
Prudential Foundation
Radio Dial Marketing -
Tom and Chris Schiller
Dr. Christopher & Sara Rapuano
Adam Rogers
Carl & Donna Robinson
Bruce & Susan Rosenbam
Sally & Edwin Rosenthal

The Rouse Family
Charitable Trust
Siobhan Ruane
Calvin Mayo &
Tanya Ruley-Mayo
Mary & Paul Rutter
Arthur & Marie Salvagno
Maureen & Fred Selby
Donna & Jerry Slipkoff
Maryrose Smocek
Jon & Jean Snyder
Steven & Bonnie Snyder
Eric Spare
Roman & Lynne Tatarowicz
Dell Technologies
James & Lisa Turner
Joseph & Sandra Vasta
Donna Visoli & Cesar Silebi
Lew & Hella Volgenau
Beau & Valerie Whitman
Rick & Carol Whitman
Jan Wright
Maureen & Joe Yanoshik
Elizabeth M. Young
Gina T. Zegel
Anonymous (3)

BENEFACTORS (\$250+)

Lee Aaron
Charles Adams
Mary Beth & Aaron Adams
M. Faith Angell &
Kenneth Carobus
Stephen & Domenick Angilletta
Dr. Brandi Baldwin
Dr. Kenneth & Susan Basalick
Andrew Bertalozzi
Black Rock Matching Gift
Program
Richard Boardman
Lucy Boardway
Daniel Bosin
Michael Bove
Lisa Boyell
Mark Branson &
Jacqueline Meckwood
Paul & Brenda Branson
Hank & Melissa Brasteter
Mr. & Mrs. Thomas E.
Brightman
Joyce Brady
Anthony Bruno
Susan Bunch
Maxine Bryant
Dr. David & Ruth Capuzzi
Ralph Carey
Kathryn G. Carlson
Donna Carmody
France Carmody

Susan Casey
Ken Cenci &
Nora McElean-Hopson
Nancy L. Cervino
Dr. & Mrs. Howard Cetel
Chubb Corporate Giving
Mary Anne & Nick Ciasullo
Sharon Coghlan
Robert & Deborah Cohen
Sherri & Daniel Cohen
In Memory of Virginia R. Cragg
Mary M. Creekmore
Sophie & Robert D'Agostino
Sharon A. Dennison
Beth DePietropolo
Dr. Ramon Diaz-Arastia
Jim DiCarlo
Kevin & Barbara Dillon
Document Concepts, Inc.
Janet Driscoll
Helen Dungan
Sheryl Durham
Claudia & John Dustin
Kellie & Mike Feehan
Ellen Sott Fisher
Jim Fitzgerald
Dawn Frank
Kristin & Gary Friedman
Arthur J Gallagher Foundation
Robert & Bernadette Garofala
Ann & Carl Gersbach

Fred & Sue Gordon
William Greenberg
Eleanor & Stephan Gribok
Mary Jane & Benjamin Griffith
Douglas & Epiphany Grisbaum
Linda Gussie
Helen M. Hall
Elizabeth Harrop &
Ben Bond
Rev. William D. Hartman
John R. & Eileen Hogan
Jean & Larry Holbert
Sandra Horwitz
Dr. Geza & Magdalena Incze,
In Memory of Robert I. Incze
Lynn Jordan
JPMC Foundation
Homi & Shireen Kapadia
Dennis Keleshtian &
Chris Dostal
John & Barbara Kelly
Stephanie Kelly
Marilyn Kirshbaum
Kris Klufas
Dr. Sylvester & Jeraldine
Kohut, Jr.
George & Patricia Kroculik
Scott & Rita Ann Lamb
Karen & Robert Landman
Cheryl Lane
Earl W. Laney

Harry & Kellen Lavallen
Nelvin Lee & Stephen Walker
John & Daniela Leone
Victoria Levesque
Mr. & Mrs. James Love
Joel & Barbara Luber
Boyd & Judith Mackleary
G. Bruce Mainland
Joe & Olena Maloney
Elliott Moser
Richard & Kathleen Mayberry
James & Patricia Mayhew
Charitable Fund, a Donor
Advised Fund of U.S.
Charitable Gift Trust
Steve Mazda
Philip & Patricia McAloon
Rita A. McBride
Kristi McGarvey
Harriet McGraw
Dorothy McMullen
Joseph & Trina McSorley
Miriam & Stan Meltzer
Mary Middleman
Kathleen Mitchell
Patricia M. Moore
Hermann & Barbara Moser
Gregory & Brenda Mullane
Jonathan Myerow
Suzanne & Jules Olita
John O'Hara

Rick Osman
David Orouke
Harvey & Lisa Ostroff
Robert Overell
Frank & Anne Palopoli
Susan Peck
Dr. Bernard & Joy Pekala
Linda Penza
L. Stephan & Rochelle Perchick
Eileen Pieper
Mr. & Mrs. Steven B. Pinsky
Susan Pitcher
Frances Pliskin
Nancy Pliskin
Barbara Poncek
Rocco Pugliese
Diana & Philip Racobaldo
Linda Reedy
Dr. & Mrs. Melvyn Richter
Deborah Radia
John & Peggy Sabo
Gail Scofield
Carol & Douglas Sherwood
Anne & Peter Silverberg
Patrick & Donna Smith
Robert Snyder
John & Catherine Solari
Gregory & Marlena Stratoti
Mr. & Mrs. Harry Symons
Donald & Jane Tarntum
John & Rochelle Thompson

BENEFACTORS, continued

Ed & MaryAnn Tierney	Anne & Richard Umbrecht	Michelle Weinstock	David & Karen Winning	Susan & Kevin B. Zebrowski
Gail R. Tillman	Richard Vanberg	Len Weiser	Denise Wisneski	Robert Zimet
Jan Toke	Sarah & John VanBuren	Llew Werley, Jr.	Denise & Kathleen Wojcik	Anonymous (2)
Wayne Tobolski	Edward Vidal	Howard & Victoria White	Alice Zal	
Susan & Robert Tribit	Walter Vogler	Thomas Wholey	Sandra Zarodnansky	

PLATINUM STAR VOLUNTEERS

Lee Aaron	Deborah Burton	Randi Chud & Bob Frey	Maryanne Giampapa	Jolene A. Martin
Laurie & Barry Altmark	Ken Cenci &	Jim DiCarlo	Blossom Gica	Anne J. Mitchell
Cathanne Bart	Nora McElean-Hopson	Marsha A. Flager	Jean & Larry Holbert	Barbara Poncek

Contributions made to Walnut Street Theatre between July 1, 2022 and August 5, 2023; additional supporters are gratefully acknowledged online at walnutstreettheatre.org/support/ways-to-give.

Every effort has been made to ensure this is a complete list; if your name is listed incorrectly, please contact the Development Office at 215-574-3580.

POP REED LEGACY SOCIETY

The Pop Reed Legacy Society recognizes individuals who have made provisions for Walnut Street Theatre through a planned gift. Because of their commitment to keeping our flame eternal, we know that our legacy will burn bright for future generations of audiences, artists, and students alike.

Anastasios and Anastasia Bandy*	Jeremy Edgedcliffe-Johnson	Gary Grab*	Carol Lange	Rebekah Sassi
Bruce Belzak	Harold Farrey*	Bernard Harvard &	Lloyd Lewis*	Martin Spector
John J Burns*	Rhoda & Louis Fryman	Judy Capuzzi Havard	Miranda Markart	Mark D. Sylwester
Joseph & Suzanne Calabro	Bruce & Terri Goldberg	Ken & Nancy Hellendall	Joan Prewitt*	Thomas C Wiernicki*
George Chamberlain	John & Liz Gontarz	George L James III*	Kevin & Jane* Roach	
Philip Drach*	Sylvia Green*	Don & Diane Kolodziejcki	Dr. Harry Rosenthal	*Deceased

CAPITAL CAMPAIGN

In acknowledgement of contributions made to *The Future Lives Here* Expansion Project, Walnut Street Theatre is humbled to thank the following donors of \$250+.

George J. Ahern	Rhoda & Louis Fryman	Kathy & Dave Hychalk	Mrs. and Mr. Margaret &	Robert & Cheryl Traub
Arthur Murray International, Inc.	Matt Garfield	In Memory of Jane Lydon Kappel	Mark Morgan	Meryl Udell & Kelci
Mr. & Mrs. John Ash	Jack & Ellie Garfinkle	Catharine Keim	Maria & Steve Needles	Todd & Barbara Vanett
Dave & Bill Bailey	Dr. & Mrs. Robert J. Geller	Kent Family	Lynn & Cherie Oakes	Miguel Velez &
Andrew and Melissa Baumbach	Michele M. Gendron	Alan & Henrietta Kiel	Pennsylvania Lumbermens	Catherine DeGroot
David S Blum &	George Boehm	Walter Kissel	Mutual Insurance Company	Margaret & Rick Volpe
Mark B Woodland	Gail & Samuel Goldstein	Carol & John Little	Daniel W. & Chieeng K. Pritchard	Timothy & Leora Wile
Tom & Amy Bohner	Janis Goodman	Stephen E. Lore	PNC Bank	Richard Woosnam
Dolores & Ronald Bowlan	Mackenzie & Joshua Gross	Mr. & Mrs. Ted Lotz	Philip & Diana Racobaldo	Maryann Ziembra
Mr. & Mrs. Warren Brandies	Patrick & Shelly Guise	Debbie & Elliott Maser	Scott & Sharon Rankin	Anonymous (6)
Drs. Lee & Ellen Brooks	Ramona Gwynn	Philip & Marjorie Masters	Earl & Felicia Rehmman	
Drs. James Byers &	Guy Hackney	Patricia & Philip McAloon	Kevin & Jane Roach	
Stephanie Chuipek	Helen M. Hall	Dr. Donald McGuigan, D.D.S.	Dally Beechman Schnall	
Dr. & Mrs. David Capuzzi	Tom & Rosemary Hampton	Michael & Deborah McKee	Keith Schneck	
Natalie Caruso	Bob & Louise Harman	Louis and Bessie Stein	Carmyn J Schultheis	
Dr. Todd & Wendy Cohen	William D. Hart	Foundation Fund #2	Kathy & Don Shannon	
Olympia Colasante	Bernard Harvard &	Arthur P. & Marjorie L. Miller	Dick & Maria Shroy	
Sally & Tom Coultres	Judy Capuzzi Havard	John W. Mills	Adam & Christine Sigal	
Charles J. Denny	Gillian Herschman	Mr. & Mrs. Francis J. Mirabello	Jon C. & Karen P. Sirlin	
Gary & Marlene Dworin	Alicia & John Hlywak	Richard A. Mitchell	Syde Hurdus Foundation	
Beverly S Emanuel	Denise D. Hodgson	Steven & Deborah Mongiardo	The Arcadia Foundation	
Jeff & Lyn Evans	John & Eileen Hogan	David & Lyn Montgomery	The Fox Foundation,	
Sean & Amy Fahey	Tom & Paula Hollencamp	Robert Basile & Marie Mooney	In Memory of Rex & Carol Fox	
Jeff & Janie Ferro	Bruce & Alice Hudson	Dr. Jonni & Roger Moore	The Otto Haas Charitable Trust	
Dr. & Mrs. William G. Field	Mr. & Mrs. Huphoeflewicz		Charles & Clarice Thum	



Decidedly Different. Decidedly Engaging.

You've worked hard for these carefree days and now it's time to enjoy them. A day at our continuing care retirement community might include a session in the floral design studio, a book discussion group, or a game of pickleball. Plus, Philadelphia's cultural resources are close at hand. There's always something interesting to do at Dunwoody Village. Contact us today to find out more.



(610) 359-4400 | www.dunwoody.org

3500 West Chester Pike • Newtown Square, PA 19073-4168

Independent Living • Rehabilitation • Personal Care • Skilled Nursing • Memory Support • Home Care



Pet Friendly