

# PLAYBILL®

 WALNUT STREET THEATRE  
PHILADELPHIA, PENNSYLVANIA



Disney  
**BEAUTY  
AND THE  
BEAST**

---

THE BROADWAY MUSICAL

---

We're bringin' back Christmas.



An Apple Original Film

# SPIRITED

Will Ferrell Ryan Reynolds

NOW STREAMING

Apple tv+

PARENTS STRONGLY CAUTIONED  
**PG-13**  
LANGUAGE, SOME SUGGESTIVE MATERIAL, AND THEMATIC ELEMENTS.  
Some Material May Be Inappropriate for Children Under 13

WRITTEN BY SEAN ANDERS & JOHN MORRIS DIRECTED BY SEAN ANDERS



Original Films



# PLAYBILL®

**Chairman Emeritus:** Arthur T. Birsh  
**Editor in Chief Emeritus:** Joan Alleman  
**Secretary/Treasurer:** Shamindra Jagnanan

**Chairman & CEO:** Philip S. Birsh  
**Chief Financial Officer:** Shamindra Jagnanan  
**Chief Operating Officer & VP:** Alex Birsh  
**Director of Manufacturing:** Robert Cusanelli  
**Executive Assistant to CEO & COO:** Dalconerys Reyes

**Editor in Chief:** Diep Tran  
**Production Managers:** Alexander Near  
Jenna Perrino  
**Prepress Manager:** Seán Kenny  
**Prepress Specialist:** Benjamin Hyacinthe  
**Managing Editor, Classic Arts:** Stephen Vratto  
**Art Director:** Kesler Thibert  
**Creative Services Manager:** Dean Greer  
**Managing News Editor:** Logan Culwell-Block  
**Features Editor:** Talaura Harms  
**New York Broadway Editors:** Scott Hale  
Khadijah Rentas  
**Managing Program Editor:** Matt Bonanno  
**Program Editors:** Amy Asch  
David Porrello  
Andrew Rubin

**Publisher, West Coast Sales & Partnerships:** Glenn Shaevitz  
**Vice President of Sales:** Joshua Stone  
**Associate Publisher:** Jolie Schaffzin  
**Head of Sales for Theatrical and Regional Markets:** Nicholas Foster  
**Director, Restaurant Advertising:** Clara Barragán  
**Sales Marketing Manager:** Kelly Werner  
**Advertising Sales Associate:** Franchesca Reese  
**Sales Assistant:** Joe Weinberg  
**Ticket Manager:** Yadira Near

**Chief Technology Officer:** Jon Goldman  
**Director of Digital Operations:** Andrew Ku  
**Creative Director:** Bryan Campione  
**Director of Events & Creative Strategy:** Leonard Rodino  
**Director, Online Advertising & Operations:** Jim Cairl  
**Senior Digital Media Manager:** Katie Clooney-Gainey

## PHILADELPHIA ADVERTISING SALES

Franchesca Reese  
(646) 751-4153 | freese@playbill.com

## Advertising Sales

729 Seventh Avenue, 4th Floor  
New York, New York 10019  
(212) 557-5757

PLAYBILL® is published by PLAYBILL Incorporated, 729 Seventh Avenue, 4th Floor, New York, NY 10019. Copyright 2023 by PLAYBILL Incorporated. All Rights Reserved. PLAYBILL® is a Registered Trademark of PLAYBILL Incorporated.

# Contents

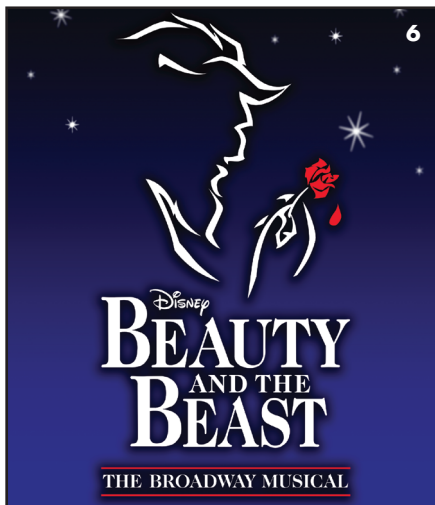
NOVEMBER–DECEMBER 2023

**THEATRE QUIZ** 2

**WELCOME** 4

**THE PROGRAM** 6

Including Cast, Who's Who and Credits



# THEATRE QUIZ: DISNEY ON BROADWAY

By Andrew Gans

Disney Theatrical Productions, which was formed in 1994, operates under the direction of Thomas Schumacher. Its 10 Broadway titles have been seen by more than 200 million theatregoers worldwide, and those shows have earned 62 Tony nominations, winning Broadway's top honor 20 times. Can you identify some of Disney Theatrical Productions' Broadway outings pictured below? Clues are provided, and answers are upside down at the bottom of the page.

1. Disney Theatrical Productions entered the Broadway arena in 1994 with this Alan Menken-Howard Ashman-Linda Woolverton-Tim Rice musical based on the 1991 animated film of the same name. The Tony-nominated musical played 13 years on Broadway and has been produced in 37 countries worldwide.

2. This Tony-winning Best Musical opened on Broadway in November 1997 at the New Amsterdam and continues its record-breaking run at the Minskoff. The international hit was directed by Julie Taymor, who became the first woman to win the Best Director of a Musical Tony Award.

3. In March 2000, this musical, featuring a score by Elton John and Tim Rice, opened at Broadway's Palace Theatre with a cast led by Heather Headley, Adam Pascal, and Sherie Rene Scott. Directed by Robert Falls, the production won four Tony Awards, including one for Headley's performance in the title role.

4. Everyone's favorite nanny took center stage in this Disney co-production with Cameron Mackintosh, which premiered in London in 2004 before arriving on Broadway in 2006. Based on the stories of P.L. Travers and the 1964 Disney film starring Julie Andrews, the musical was nominated for seven Tony Awards, including Best Musical.

5. This Alan Menken-Howard Ashman-Tim Rice-Chad Beguelin musical, which opened in March 2014 at Broadway's New Amsterdam Theatre, where it continues, is based on the 1992 Disney film of the same name. The musical was nominated for five 2014 Tony Awards, including Best Musical, winning James Monroe Iglehart the award for his performance as the Genie.

6. Based on the 2013 Disney film, which featured the Oscar-winning "Let It Go," this musical, with a score by Kristen Anderson-Lopez and Robert Lopez and a book by Jennifer Lee, opened on Broadway in March 2018, earning Tony nominations for Best Musical, Best Book, and Best Original Score.



JOAN MARCUS



DEEN VAN MEER



JOAN MARCUS



DEEN VAN MEER



JOAN MARCUS



DEEN VAN MEER

ANSWERS: 1. *Beauty and the Beast* 2. *The Lion King* 3. *Aida* 4. *Mary Poppins* 5. *Aladdin* 6. *Frozen*



| AS WELL CONNECTED AS YOU |



THE LEXUS LS



Some connections are invaluable—take the highly advanced LS as proof. Its 12.3-inch touchscreen display seamlessly helps you connect with the world, and its available Adaptive Variable Air Suspension dramatically enhances your connection with the road. In the Lexus LS, every move you make is more brilliant.

[LEXUS.COM/LS](https://www.lexus.com/ls)



FOUNDED 1808

AMERICA'S OLDEST THEATRE – PHILADELPHIA'S MOST POPULAR THEATRE COMPANY

# WALNUT STREET THEATRE

825 WALNUT STREET • PHILADELPHIA, PA 19107

Dear Theatregoer,

Welcome to another exciting holiday season at the Walnut! The successes we have celebrated over the past 41 seasons as a not-for-profit producing theatre company would not be possible without theatregoers like you. Whether you are one of our loyal subscribers, or visiting us for the first time, *you* make this possible. Thank you for your support! We are delighted you chose to make *Disney's BEAUTY AND THE BEAST* a part of your holidays.

My wife, son, and I have always loved sharing the holidays with our family and friends. Sharing the season – and this production with you – our Walnut family, adds to our holiday delight. As you enjoy the timeless story of *BEAUTY AND THE BEAST*, you'll see many familiar faces who have come home to the Walnut for the holidays, as well as many fantastic artists who are new to our stage. I am thrilled to share their talents and this enchanting adaptation of this beloved fairy tale with you.

I invite you to join us in the new year for our next Mainstage production, Edward Albee's explosive Tony Award Best Play Winner, *WHO'S AFRAID OF VIRGINIA WOOLF?* Following that, we'll commemorate the 100th anniversary of The Marx Brothers' legendary run at the Walnut with a sidesplitting and heartwarming tribute in *GROUCHO: A Life in Revue*, celebrating 'The Kings of Comedy.' Lastly, our season will culminate with the enthralling journey of *BEAUTIFUL - THE CAROLE KING MUSICAL*, promising an unforgettable ride through the life of a music icon.

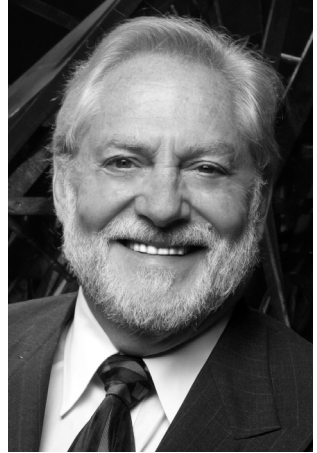
In addition to our exciting Mainstage Season, we are thrilled that classes at The Theatre School at Walnut Street Theatre are underway for our winter semester, serving students of all ages. If you or someone you know has a passion for performance, I encourage you to review our offerings for this and upcoming semesters.

I am also pleased that we will be expanding our Walnut Street Theatre for Kids' productions this season, bringing back the favorite *Charles Dickens' A CHRISTMAS CAROL* for the holidays, and the much-loved *MADAGASCAR JR.* in the spring.

Now, I invite you to take a break from the hustle and bustle and enjoy *Disney's BEAUTY AND THE BEAST!* My family and I wish you all the very best this season.

Sincerely,

Bernard Havard,  
President and Producing Artistic Director





THIS HOLIDAY SEASON  
**GIVE TIX**

TO



**SIX**

THE MUSICAL



**Critics' Pick**

WRITTEN BY 2022 TONY AWARD® WINNERS  
**TOBY MARLOW & LUCY MOSS**

**BROADWAY • ON TOUR**

**SIXONBROADWAY.COM**



Proud Partner  
of SIX



ORIGINAL BROADWAY CAST PHOTOS BY ANDREW ECCLES



FOUNDED 1808

AMERICA'S OLDEST THEATRE – PHILADELPHIA'S MOST POPULAR THEATRE COMPANY

# WALNUT STREET THEATRE

825 WALNUT STREET • PHILADELPHIA, PA 19107

**BERNARD HAVARD**

President and Producing Artistic Director

November 21 – December 31, 2023

*Disney's*

## **BEAUTY AND THE BEAST**

Music by  
**ALAN MENKEN**

Lyrics by  
**HOWARD ASHMAN &  
TIM RICE**

Book by  
**LINDA WOOLVERTON**

Originally Directed by  
**ROBERT JESS ROTH**

Originally Produced by

**DISNEY THEATRICAL PRODUCTIONS**

Original Music Supervision and New Arrangements by Michael Kosarin

Dance Music Arrangements by Glen Kelly

Orchestrations by Danny Troob

Set Design  
**ROBERT ANDREW  
KOVACH**

Costume Design  
**MARY FOLINO**

Lighting Design  
**MATT DEMASCOLO**

Sound Design  
**ED CHAPMAN**

Wig Design  
**CARISSA THORLAKSON**

Make-Up Design  
**KELSEY BROOKS**

Director of  
Production  
**SIOBHÁN RUANE**

Stage Managers  
**MICHELE BEGLEY  
ELIZABETH HAROIAN**

Associate  
Artistic Director  
**BRIAN KURTAS**

Music and Vocal Direction by  
**CHRIS BURCHERI**

Choreographed by  
**KIM ARNETT**

Directed by  
**GLENN CASALE**

SPONSORED BY

**Independence** 

**Spark** 

*Filler Club*

**RCC** Royer Cooper  
Cohen Braunfeld

**MARK D. SYLVESTER**

Managing Director

Director of  
Education  
**T.J. SOKSO**

Director of Marketing  
and Public Relations  
**STEPHEN RAPP**





Prudential PRESENTS

# MARQUEE MOMENTS

A BROADWAY TICKET GIVEAWAY

IN PARTNERSHIP WITH **PLAYBILL**



# TICKETS ON US!

Enter to win two tickets to the theatre show of your choice—with our Marquee Moments Ticket Giveaway.

**Scan the code now to get started.**  
And start dreaming about which soul-stirring, standing-ovation-inspiring show you want to see!



[PrudentialMarqueeMoments.com](https://PrudentialMarqueeMoments.com)

NO PURCHASE NECESSARY. VOID WHERE PROHIBITED. Open only to legal residents of the 50 United States and District of Columbia, 18 or older. The monthly contest ends at 11:59 p.m., April 16, 2024. Official rules and contest requirements available at [www.PrudentialMarqueeMoments.com](https://www.PrudentialMarqueeMoments.com). Investment Products: Not FDIC-insured \* No Bank Guarantee \* May Lose Value.

© 2023 Prudential Financial, Inc. and its related entities. Prudential, the Prudential logo and the Rock symbol are service marks of Prudential Financial, Inc. and its related entities, registered in many jurisdictions worldwide.

1072501-00001-00

---

---

# CAST

(in order of appearance)

|                                 |   |
|---------------------------------|---|
| Beast.....                      | DANIEL WISNIEWSKI*                                      |
| Belle .....                     | JULIA UDINE*  |
| Bookseller .....                | ADAM HOYAK*   |
| Lefou .....                     | GIOVANNI DIGABRIELE*                                    |
| Gaston .....                    | CHRIS STEVENS*  |
| Three Silly Girls .....         | ALEX FROHLINGER*, RACHEL BRITTON HART*, AUDREY SIMMONS* |
| Maurice .....                   | BILL VAN HORN*  |
| Wolves.....                     | ADAM HOYAK*, JESSE JONES*, ZUMMY MOHAMMED*              |
| Cogsworth .....                 | FRAN PRISCO*  |
| Lumiere .....                   | DANA ORANGE*  |
| Babette .....                   | BONNIE KELLY*   |
| Mrs. Potts .....                | MARY MARTELLO*  |
| Chip .....                      | GRANT KNUDSON † / RAPHAEL SOMMER ‡                      |
| Madame de la Grande Bouche..... | REBECCA ROBBINS*  |
| Salt and Pepper .....           | JOSEPH FIERBERG*, JESSE JONES*                          |
| Carpet.....                     | KEVIN KULP*   |
| Monsieur D'Arque .....          | ADAM HOYAK*   |

## ENSEMBLE

SARA BROPHY\*, JOSEPH FIERBERG\*, ALEXANDRA FROHLINGER\*,  
PHOEBE GAVULA, RACHAEL BRITTON HART\*, JESSE JONES\*, KEVIN KULP\*,  
KIMBERLY MAXSON\*, DANIEL MILLER, ZUMMY MOHAMMED\*,  
SAMANTHA ROCHE, AUDREY BIEHL SIMMONS\*, DEVON SINCLAIR\*

## EXTRAS

JULIA SHICATANO, JACK SULLIVAN, MONIQUE STREETY, ETHAN B. WALKER

## UNDERSTUDIES

ANDREW BARR (Cogsworth), ANDY BOETTCHER (Beast), AUDRA CASEBIER (Madame de la Grande Bouche), KRISTIN TITUS DIAMORE (Mrs. Potts), JORDAN ECK (Lefou), DJ HERNANDEZ (Ensemble), ADAM KASTER (Gaston), RYAN LAUER (Ensemble), KEITH LIVINGSTON (Ensemble), BRIAN MANNING (Chip), RACHEL MASELEK (Ensemble), JULIA SHICATANO (Ensemble), JAY W. STEINBERG (Maurice), MONIQUE STREETY (Ensemble), GRACE SZCZEPKOWSKI (Babette), HANA E TOGAMI (Belle), ETHAN B. WALKER (Lumiere)

† Performs weeknights; ‡ Performs weekends

## DANCE CAPTAIN

AUDREY BIEHL SIMMONS

## FIGHT CAPTAIN

BONNIE KELLY

\* The Actors and Stage Managers employed in this production are members of Actors' Equity Association, the theatre union of Professional Actors and Stage Managers in the United States.

Select costumes by Ryan Moller provided by Tuacahn Costume Rentals.

The videotaping or other video or audio recording of this production is strictly prohibited.

Artwork © Disney

## Disney's BEAUTY AND THE BEAST

Is presented through special arrangement with Music Theatre International (MTI).  
All Authorized performance materials are also supplied by MTI. [www.mtishows.com](http://www.mtishows.com)





*Wood·Mode*<sup>®</sup>  
FINE CUSTOM CABINETS

Celebrate your style.

Discover personalized design and highly functional accessories for your home.

Contact us to discover more.

Wall & Walsh, Inc.

610-789-8530

[wood-mode.com](http://wood-mode.com)

8320 West Chester Pike  
Upper Darby, PA 19082

---

---

# MUSICAL NUMBERS

## ACT I

|                                    |   |
|------------------------------------|---|
| Overture .....                     | Orchestra   |
| Prologue .....                     | Orchestra   |
| “Belle” .....                      | Belle, Gaston, Lefou, Silly Girls, Townspeople  |
| “Maurice Travels”* .....           | Maurice   |
| “Me”* .....                        | Gaston, Belle   |
| “Belle” (Reprise).....             | Belle   |
| “Home”* .....                      | Belle   |
| “Home”* (Reprise) .....            | Mrs. Potts, Madame de la Grande Bouche  |
| “Gaston” .....                     | Lefou, Gaston, Silly Girls, Tavern Patrons  |
| “Gaston” (Reprise).....            | Gaston, Lefou   |
| “How Long Must This Go On?”* ..... | Beast   |
| “Be Our Guest” .....               | Lumiere, Mrs. Potts, Cogsworth, Madame de la Grande Bouche,<br>Chip, Babette, Enchanted Objects |
| “If I Can’t Love Her”* .....       | Beast   |

*THERE WILL BE ONE 20-MINUTE INTERMISSION.*

## ACT II

|                                       |   |
|---------------------------------------|---|
| Entr’acte/Wolf Chase .....            | Orchestra   |
| “Something There” .....               | Belle, Beast, Lumiere, Mrs. Potts, Cogsworth  |
| “Human Again” .....                   | Lumiere, Madame de la Grande Bouche, Cogsworth,<br>Mrs. Potts, Babette, Chip, Enchanted Objects |
| “Beauty and the Beast” .....          | Mrs. Potts  |
| “If I Can’t Love Her”* (Reprise)..... | Beast   |
| “A Change In Me” .....                | Belle   |
| “The Mob Song” .....                  | Gaston, Lefou, Monsieur D’Arque, Townspeople  |
| “Transformation/Finale Ultimo”* ..... | Beast, Belle, The Company   |
| “Beauty and the Beast” (Reprise)..... | The Company   |

\*Music by Alan Menken and lyrics by Tim Rice.  
All other lyrics by Howard Ashman and music by Alan Menken

## ORCHESTRA

Keyboard 2/Conductor: Chris Burcheri  
Keyboard 1/Associate Conductor: Jake Collins  
Reed 1 (Flute, Piccolo): Frank Mazzeo  
Reed 2 (English Horn, Oboe): Bob Quaile  
Reed 3 (Bass Clarinet, Clarinet, Flute): John Welte  
Horn: Lyndsie Wilson  
Trumpet, Flugelhorn, Piccolo Trumpet: Jim Ward  
Percussion: Kevin Blanke  
Violin/Concertmaster: Rebecca Ansel  
Cello: Jessie Reagen Mann  
Bass: David Weiss

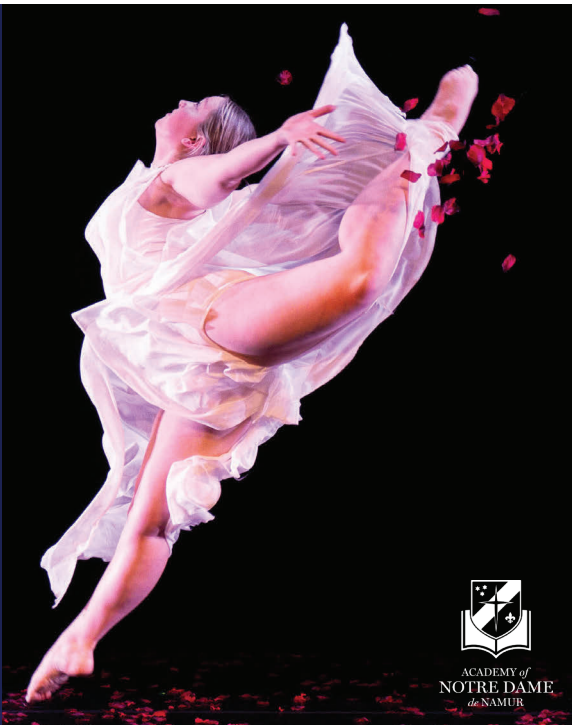
# Watch Your Daughter *Flourish* at Notre Dame!

## Walk-in Wednesdays

Nov. 1 • Dec. 6 • Jan 10  
*Tours depart at 9 am*



Academy of Notre Dame de Namur  
*World-Class Independent  
Catholic Education  
All Girls • Grades 6-12  
ndapa.org/visit*







ACADEMY of  
NOTRE DAME  
de NAMUR

# LIFE, on a Scale of You.

Foulkeways Resident,  
David Long



**Foulkeways**  
AT GWYNEDD

Foulkeways, a Quaker Life Plan Community,  
is rich in melody. Visit or call us today to  
create your own unique rhythm.    

**foulkeways.org | 215-283-7010 | 1120 Meetinghouse Rd, Gwynedd, PA**





**Sara  
Brophy**



**Giovanni  
DiGabriele**



**Joseph  
Fierberg**



**Alexandra  
Frohlinger**



**Phoebe  
Gavula**



**Rachael Britton  
Hart**



**Adam  
Hoyak**



**Jesse  
Jones**



**Bonnie  
Kelly**



**Grant  
Knudson**



**Kevin  
Kulp**



**Mary  
Martello**



**Kimberly  
Maxson**



**Daniel  
Miller**



**Zummy  
Mohammed**



**Dana  
Orange**



**Fran  
Prisco**



**Rebecca  
Robbins**



**Samantha  
Roche**



**Audrey Biehl  
Simmons**



**Devon  
Sinclair**



**Raphael  
Sommer**



**Chris  
Stevens**



**Julia  
Udine**



**Bill  
Van Horn**



**Daniel  
Wisniewski**

# QUINTESSENCE THEATRE



## THE FANTASTICKS

BOOK & LYRICS BY TOM JONES  
MUSIC BY HARVEY SCHMIDT

**STARTS  
NOV 22 2023**

## TWO HOLIDAY MUSICALS!

## THE LITTLE PRINCE

BOOK & LYRICS BY JOHN SCOLLAR  
MUSIC BY RICK CUMMINS

**STARTS  
DEC 2 2023**

[WWW.QTGREP.ORG](http://WWW.QTGREP.ORG)

Your Brand  
**Hand Delivered**  
to Your  
Target Audience!

**Contact us today  
to reserve space in  
PLAYBILL.**

**Your Sales Representative:**

Frankie Reese  
[freese@playbill.com](mailto:freese@playbill.com)  
646.751.4153

**PLAYBILL**

Doylestown, PA



*Holidays at  
Fonthill Castle*



MERCER  
MUSEUM  
& FONTHILL  
CASTLE

Tickets at

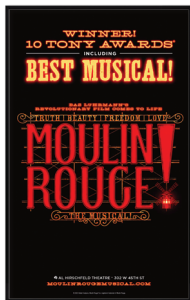
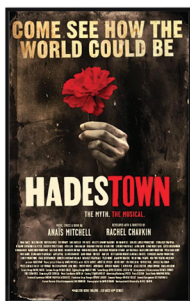


# The Playbill® Holiday Gift Guide 2023



## Protect & Display

PLAYBILL Binders and Sleeves protect your precious theatre keepsakes. Share your favorite Broadway memories with Playbill Display Frames and Poster Frames.





# Celebrate

PLAYBILL Gifts and Broadway Souvenirs are perfect for the theatre lover on your holiday list.



Text **SHOPPLAYBILL** to 66866 for a chance to win a \$250 **PLAYBILL STORE** Gift Certificate

For terms & conditions visit [playbillstore.com](http://playbillstore.com)

# Wear & Share

PLAYBILL and Broadway Apparel add some dash and drama to your day (or night!)



**PLAYBILL**STORE.com



# WHO'S WHO IN THE CAST

**SARA BROPHY** (*Ensemble*) is thrilled to be returning to WST! Last seen in *Legally Blonde*, this marks Brophy's 6th show at the nation's oldest theatre. An upstate New Yorker by birth, she's a proud UArts Dance alum. Thank you to Brook for continually making the impossible possible!

**GIOVANNI DIGABRIELE** (*Lefou*) is thrilled to be back at the WST and playing in his hometown! NYC: *Broadway Bares*. Broadway National Tour: *Cats*; *A Bronx Tale*; *A Chorus Line*; *Cinderella*. Regional: Goodspeed Opera House, Maine State Music Theatre, WST, and Fulton Theatre. Endless gratitude to the entire creative team, Glenn, Kim, Walnut staff, Bernard, Brian, his Italian family, friends, and mentors. For Santino, Luca, and Adriana.

**JOSEPH FIERBERG** (*Ensemble*) WST debut! Joseph is enchanted to return to *Disney's Beauty and the Beast* after national and international tours. Favorite credits: NY City Center: *A Chorus Line*; Theatre Under The Stars: *Jerome Robbins' Broadway*; Muny: *Disney's The Little Mermaid*; Goodspeed: *Chasing Rainbows*; PA Shakespeare: *West Side Story*; and the national tour of *Elf The Musical*. TV credits: the series finale of *The Marvelous Mrs. Maisel* (Amazon Prime); *The Gilded Age* (MAX); *Dickinson* (Apple TV+). Proud Syracuse U. Grad. Many thanks to Glenn, Kim, Chris, Brian, CESD, and the folks at WST. Endless love and gratitude to my family; I wouldn't be here without you.

**ALEXANDRA FROHLINGER** (*Ensemble*) is thrilled to be back at WST! WST: *Disney's The Little Mermaid*; *Cinderella*; *Escape to Margaritaville*. Broadway: *Soul Doctor*. Off Broadway: *Amerike: The Golden Land* at NYTF (Drama Desk nomination), National Tours: *A Wonderful World*; *Hello, Dolly!*; *Cinderella*; *West Side Story*. Regional Theater: Sacramento Music Circus; Arena Stage. Film/TV: *Orphan: First Kill* (stunts); *Blood* (stunts). BFA Boston Conservatory. Thanks, and love: Mom, Dad, Joey, Becky and Zaida @alexfrohlinger

**PHOEBE GAVULA** (*Ensemble*) (she/her) thrilled to return to WST, she couldn't be happier to be back in Philly with friends and family for the holidays after moving to New York with her dog, Asparagus, earlier this year. WST: *Cinderella*; Arden Theatre Company: *Cabaret*; Candlelight Theatre: *Sweet Charity*; Gretna Theatre: *Gypsy*; Delaware Theatre Company: *A Sign of the Times*; Richardson Theatre Centre: *Cabaret*; Ocean City Theatre Company: *A Chorus Line*. All the thanks and love to Mom, Dad, Jess, Joe, and Gus.

**RACHAEL BRITTON HART** (*Ensemble*) is honored to be back for her 3rd WST production! WST: *Disney's The Little Mermaid*; *Escape to Margaritaville*. National Tour: *Pippin*. Recent credits: *The Music Man*; *Cinderella*; *Something Rotten!*; *Carousel*; *Kiss Me, Kate* (Broadway at Music Circus); *White Christmas* (Fulton Theatre). Temple

Grad. My gratitude to Glenn, Kim, Chris, and the wonderful Walnut staff, LDC Artist Rep, my loving family and friends, and to you for being our guest! @ihart\_dancing

**ADAM HOYAK** (*Monsieur D'Arque*) Happy to be back at WST! Regional: WST: *Cinderella*; *Disney's The Little Mermaid*, *Shrek*; *Matilda*; Media: *The Prom*; *Hello, Dolly!*; Delaware Theatre Company: *Honk!*; Bristol Riverside: *Cabaret*; *Triumph of Love*; The Eagle Theatre: *Ragtime*; *Rock of Ages*; *John & Jen*; *Heathers*; Theatre Horizon: *Altar Boyz*; *Black Nativity*; 11th Hour: *Dogfight*; Gretna Theatre: *Matilda*. All of my gratitude to WST team, cast and crew. For my love, Adam Mandala. IG: @ahoymatey7

**JESSE JONES** (*Ensemble*) Broadway & North American Tour: *Beetlejuice*. Regional: Riverside Theatre: *La Cage Aux Folles*; Sacramento Music Circus; *In The Heights*; Alliance Theatre: *Jesus Christ Superstar Gospel*; Patchogue Theater: *The Cher Show*; WST: *Disney's The Little Mermaid*; Arkansas Repertory Theatre: *The Wiz*; Barter Theatre: *Cabaret*; North Carolina Theatre: *Dreamgirls*; North Shore Musical Theatre: *All Shook Up*; Gateway Playhouse: *Swing!*; Fulton Theatre: *Smoky Joes Café* (Associate Choreographer); Opera Philadelphia; Disney World; Tokyo Disney; Transcendence Theatre: *The Full Monty*. @jessejdance

**BONNIE KELLY** (*Babette, Fight Captain*) could not be more thrilled to bring her favorite musical to Philadelphia this holiday season. Touring the country with *Disney's Beauty and the Beast*, she performed the show over 500 times! Much love to this cast of so many dear friends and her WST family. 10th WST Production, a total dream! Last seen in *Cinderella*; *Rocky*; *Disney's The Little Mermaid*; *Beehive*. For Addison Rose, who is seeing her very first musical and Nance, as always. @bondooz

**GRANT KNUDSON** (*Chip*) is thrilled to be returning to WST after playing Sonny in *Cat on a Hot Tin Roof*. He also enjoys ballet and is reprising his role as Party Boy this year in The Rock School for Dance Education's production of *Classic Nutcracker*. Grant is a 2nd grader and likes to sing and perform with Collingswood Sound. Love and thanks to big sister Vienna, family, friends, teachers, and WST! @gregariangrant

**KEVIN KULP** (*Ensemble*) is excited to be back for his 6th mainstage at WST. NY Theatre: NAAP: *Cinderella*; Carnegie Hall: *Touch the Sky* Concert. National Tours: *Disney's Beauty and the Beast* and *A Christmas Story*. Regional: WST: *Disney's The Little Mermaid*; *Cinderella*; *Matilda*; Marriott Theatre: *Miss Saigon*; *The King & I*; *Gypsy*; *Anything Goes*; Fulton Theatre: *Grease*. Other recent theatres: Signature Theatre, Drury Lane Theatre, Olney Theatre, La Mirada Theatre, Arts Center of CC & Flat Rock

# WHO'S WHO IN THE CAST

Playhouse. Next up: *The Music Man* at The Marriott Theatre in Chicago. Love to Mom, Dad & Scott.

**MARY MARTELLO** (*Mrs. Potts*) has been a regional theatre artist for over 50 years and a Philadelphia actor for 20. She has performed at WST in over 30 shows (*Cinderella*; *Blithe Spirit*; *Young Frankenstein*, etc.); Arden Theatre Company: *Sweeney Todd*; *Gypsy*, etc.; Lantern Theatre: *Doubt*; *Mrs. Warren's Profession*; *Beauty Queen of Leenane*, etc.; Act2, Azuka, 1812 Productions: *Bat Boy*; *The Carols*, etc.; Interact, PTC, PLTC, and the Wilma. Mary has also performed with the Philadelphia Orchestra and created and performed several cabarets. She's a five-time Barrymore Award recipient and a Lunt-Fontanne Fellow. Mary is proud to be a member of AEA and this Philadelphia theater community and is grateful to Bernard and Glen and the whole team at WST. Special thanks to my husband, Matt Pettigrew.

**KIMBERLY MAXSON** (*Ensemble*) Delighted and thankful to be back! WST: *Escape to Margaritaville*; *Shrek*; *Holiday Inn*; *Mamma Mia!*; *A Funny Thing... Forum*; *9 to 5*; Media Theatre: *Gypsy*; *Billy Elliot*; *Beehive*; *Hello, Dolly!*; BCCPA: *Cabaret*; *The Producers*; OCTC: *Disney's Mary Poppins*; Maple Rep: *Chicago*. Love to my husband Ronnie and my family! @kimberly\_maxson

**DANIEL MILLER** (*Ensemble*) is happy to be back at WST after debuting in *Rocky* last season. Regional: Mason Street Warehouse: *Jersey Boys*; Quintessence Theatre: *Disney's Mary Poppins*; *The Playboy of the Western World*; *The Sygne Triptych*; *Oliver!*; *The Broken Heart*; *Love's Labor's Lost*; *Mother Courage and Her Children*; Arizona Broadway Theatre: *Chicago*; The Palace Theatre: *A Chorus Line*; Ivoryton Playhouse: *West Side Story*; Texas Shakespeare Festival: *Macbeth*; *Cymbeline*; International: NCL: *Jersey Boys*; China Tour: *Legally Blonde*. Huge thanks to my family, friends, The Roster, and Alex for their love and support. @danielmillery

**ZUMMY MOHAMMED** (*Ensemble*) is thrilled to return to WST! Zummy is a graduate of Temple U. and a recipient of Broadway World's Best Choreography Award (*American Idiot*, American Stage). WST: *Cinderella*; *Legally Blonde*. Off-Broadway: *Relapse: A New Musical*. Theatre Row: *Intrusive Thought*. Regional Credits: Broadway at Music Circus: *Cinderella*; The Phoenix Theatre Company: *A Chorus Line*; American Stage: *American Idiot*. Thank you to the cast, crew, loved ones and Jim Keith of MTA. @thezummymohammed

**DANA ORANGE** (*Lumiere*) is happy to be back for another season here at WST! WST: *Shrek*; *Disney's The Little Mermaid*; *Rocky*; *Escape to Margaritaville*; Fireside Theatre: *Disney's Mary Poppins*; Florida Studio Theatre: *Something Rotten!*; Delaware Theatre Company: *Plaid Tidings*; Sacramento Music Circus: *Kiss Me, Kate*; *The Color Purple*. All

my love to my big supportive family, both blood and chosen! Next up: *Beautiful - The Carole King Musical!* www.danaorange.com

**FRAN PRISCO** (*Cogsworth*) 39th Walnut St. Theatre production! His first show was Singing in the Rain in 2000, and his most recent was *Cinderella* (2022) where he played Sebastian. Favorite roles include: Paulie in *Rocky*; Inspector/Hermit in *Young Frankenstein*; Billis in *South Pacific*; Marcellus in *The Music Man*; & Andre in *Dirty Rotten Scoundrels*. Much Gratitude to Bernard, Judy, Mark, Brian K., and the entire WST family. Much love to Siobhan. This one is for my sister Joann.

**REBECCA ROBBINS** (*Madame de la Grande Bouche*) is honored to be celebrating the holidays with you once again and thrilled to reprise this role that she first performed at WST in 2005. Most recently at WST: *Elvis—A Musical Revolution*; *Rocky*; *Cinderella*. Broadway: *A Tale of Two Cities*; *The Phantom of the Opera* (also North American Tour). WST favorites: *Disney's The Little Mermaid*; *Always... Patsy Cline*; *Legally Blonde*; *Souvenir*; *Disney's Mary Poppins*. Heartfelt thanks to Bernard, Mark, Brian, Glenn, and the cast & crew. Love to MFK. RebeccaRobbins.com @rebrobbins.

**SAMANTHA ROCHE** (*Ensemble*) WST debut! Recent credits: *Elvis—A Musical Revolution*; *White Christmas*; *Mamma Mia!*; *The Nutcracker*; *The SpongeBob Musical*; *Damn Yankees*. Samantha also created and manipulated the puppets for the Bowling For Soup music video "Getting Old Sucks." Special thanks to Wayne Ballet, Kim Russell Voice Studio, and her family for their love and support. @samantha.roche

**AUDREY BIEHL SIMMONS** (*Ensemble, Dance Captain*) (she/her) is beyond grateful you are here supporting live theatre! WST: *Cinderella*; *Escape to Margaritaville*; *Young Frankenstein*; *Shrek*; *Legally Blonde*; *Holiday Inn*. Other credits: *Ragtime*; *The Addams Family*; *The Music Man*; *Beautiful - The Carole King Musical*; *Kiss Me, Kate*; *The Secret Garden* (Broadway Sacramento). *Disney's Beauty and the Beast*; *Annie*; *The Count of Monte Cristo*; *School of Rock* (Tuacahn). UArts Grad. @audreysimmons.

**DEVON SINCLAIR** (*Ensemble*) is a proud Philly native excitedly returning to WST mainstage (Previously: *Disney's The Little Mermaid*; *Cinderella*; *Escape to Margaritaville*). The Penn State alumnus also works around the region as a Director/Choreographer, Teaching Artist, and Professor at Temple University! As a creative and artist, Devon seizes opportunities to create exuberant and engaging productions that remind us of the limitless possibilities of storytelling. Devon has been nominated twice for the 2023 Barrymore Awards for Outstanding Choreography. He gives vibrant thanks to his commu-



# WHO'S WHO

nity of loved ones. [@CHOREATOR](http://www.FiveSixDevonEight.com)

**RAPHAEL SOMMER** (*Chip*) is so excited to return to WST! His prior credits include WST: *Cat on the Hot Tin Roof*; Quintessence Theatre: *Disney's Mary Poppins*; *The Winter's Tale*; and *Honk Jr.* Raphael has also acted in numerous award-winning films and commercials. Many thanks to his family for their tremendous support and unconditional love. Special thanks to his sister Rachel, and brothers Jacob, Noah, Jonathan, and David. Thanks to everyone, cast, crew, and staff, at WST for this unforgettable experience. @raphaelsommeractor

**CHRIS STEVENS** (*Gaston*) is over the moon to be returning to WST! *Disney's Beauty and the Beast* was the first show he ever saw on Broadway. NYC/Tours: *TINA: The Tina Turner Musical*; *Waitress*; *Jersey Boys*; *Mamma Mia!*; and *CATS*. WST: *Shrek*; *Sunset Boulevard*; *Grease*; *Disney's Tarzan*; *South Pacific*. 2019 SALT Award Recipient for his portrayal of Buddy in *Elf* at Syracuse Stage. Endless thanks to his team at B.W.A. All my love and gratitude to Mom, Dad, Brett, Erin, and Kris. He dedicates this performance to his Godson, Declan and all of the children who dare to dream. @CJStevens421

**JULIA UDINE** (*Belle*) is thrilled to return to WST! Julia made her Broadway debut as Christine in *The Phantom of the Opera*. Before that, she toured the country as Christine with the original cast of the restaged North American National Tour of *The Phantom of the Opera*. She has performed the role of Christine over 900 times between both productions. Other New York Credits: New York City Center: *The Pirates of Penzance*; *Jack's Back*. Regional: Broadway at Music Circus Sacramento: *The Music Man*; WST: *Shrek*; *Tell Me on a Sunday*. She has performed with the Philadelphia Orchestra under Maestro Yannick Nezet-Seguín, celebrating Leonard Bernstein. She has also performed with Josh Groban in the opening of his Stages tour in Atlanta. TV: *Law & Order: SVU*; *All My Children*. So much love and thanks to her supportive family and friends!

**BILL VAN HORN** (*Maurice*) WST: *Disney's The Little Mermaid*; *A Woman of No Importance*; *Gifts of the Magi*; *Annie*; *A Funny Thing...Forum*; *The Wizard of Oz*; *A Christmas Story*; *Disney's Mary Poppins*; *Driving Miss Daisy*; *Elf*; *The Prince*; and *Fiddler on the Roof*. Directed: *Civil War Voices*; *The Curious Incident of the Dog in the Nighttime*; *The Glass Menagerie*; and created and starred in *O Captain, My Captain*; *Whitman's Lincoln*. Bill is a permanent member of the acting company at Theatre at Monmouth in Maine. Proud member of Actors' Equity.

**DANIEL WISNIEWSKI** (*Beast*) Philly born and raised, former Acting Apprentice, ecstatic to be back! Select Credits: *Romeo & Bernadette* (Off-Broadway); *Gone with the Wind* (International

Tour); *Men with Money* (North American premiere, Suzi Bass nomination: Best Supporting Actor), Audible bestselling narrator with over 180 titles. BFA: Ithaca College. For Faith and my family. @danthevoiceman

**ALAN MENKEN** (*Composer*) Theater: *God Bless You Mr. Rosewater*; *Little Shop of Horrors*; *Real Life Funnies*; *Atina: Evil Queen of the Galaxy*; *Kicks*; *The Apprenticeship of Duddy Kravitz*; *Disney's Beauty and the Beast*; *A Christmas Carol*; *Weird Romance*; *King David*; *Der Glöckner Von Notre Dame*; *Disney's The Little Mermaid*; *Sister Act*; *Leap of Faith*; *Disney's Aladdin and Newsies*. Film: *Little Shop of Horrors*; *The Little Mermaid*; *Beauty and the Beast*; *Newsies*; *Aladdin*; *Pocahontas*; *The Hunchback of Notre Dame*; *Hercules*; *Life With Mikey*, *Lincoln*; *Home on the Range*; *Noel*; *Enchanted*; *Shaggy Dog*; *Tangled* and *Mirror Mirror*. Songs: *Rocky V*, *Home Alone 2* and *Captain America*. Awards: 8 Oscars (19 nominations), 11 Grammys (including Song of the Year), 7 Golden Globes, Tony® (plus 4 nominations), Drama Desk, Outer Critics Circle, New York Drama Critics, Olivier and London's Evening Standard Award, Drama League. Honors: Songwriter's Hall of Fame, Doctorates from New York University and University of North Carolina School of the Arts.

**HOWARD ASHMAN** (*Lyrics*) Best known as a pivotal creative mind behind the renaissance of Disney animation and his work on *The Little Mermaid*, *Aladdin* and *Beauty and the Beast* (which is dedicated to, "Our friend, Howard Ashman, who gave a Mermaid her voice and a Beast his soul...") Ashman's first love was theater. Ashman was a founder of off off Broadway's renowned WPA Theater, where he conceived, wrote and directed *God Bless You, Mr. Rosewater*, as well as the classic musical, *Little Shop of Horrors* (both music by Alan Menken). In 1986, he wrote and directed the Broadway musical *Smile* (music by Marvin Hamlisch). Lamented as a lost treasure of the 1980's theater scene, *Smile* remains popular on High School and College campuses throughout the country. Howard Ashman died in 1991 from complications of AIDS.

**TIM RICE** (*Lyrics*) Tim Rice has worked in music, theater, and film since 1965, when he met Andrew Lloyd Webber, a fellow struggling songwriter. Rather than pursue Tim's ambitions to write rock or pop songs, they turned their attention to Andrew's obsession – musical theater. Their first collaboration, *The Likes of Us* (lyrics by Tim, music by Andrew), was an unsuccessful show based on the life of Dr. Barnardo, the Victorian philanthropist. Their next three works together were much more successful: *Joseph and the Amazing Technicolor Dreamcoat*; *Jesus Christ Superstar*; and *Evita*. Tim has also worked with other distinguished popular composers such as Elton John (*The Lion King*; *Aida*), Alan Menken (*Aladdin*; *King David*; *Beauty and the Beast*), and Bjorn Ulvaeus

# WHO'S WHO

and Benny Andersson (*Chess*). *From Here to Eternity*, with music by newcomer Stuart Brayson, coproduced with Lee Menzies, directed by Tamara Harvey, and with book by Bill Oakes, premiered in the West End at the Shaftesbury Theatre in 2013. He formed his own cricket team in 1973 and was president of the MCC in 2002. In 2013, he wrote and presented a 52-part series for BBC Radio 2, *American Pie*, a trawl through the music and musicians of every American State. He has won several awards, mainly for the wrong thing or for simply turning up.

**LINDA WOOLVERTON** (*Book*) Linda Woolverton's writing credits include the screenplay for the animated feature film *Disney's Beauty and the Beast* (Golden Globe winner and Academy Award Best Picture nominee); the screenplay (shared) for *Homeward Bound: The Incredible Journey*; screenplay (shared) for the animated feature film *The Lion King*; the book for the Broadway musical *Disney's Beauty and the Beast* (Tony Award nomination for Best Book of a Musical, winner 1998 Olivier Award Best New Musical); and book (shared) for Elton John and Tim Rice's Broadway musical *Aida*. Also she has written two young-adult novels, *Star-Wind* and *Running Before the Wind*. She holds a Bachelor's degree in Theatre Arts from California State University Long Beach and a Master's degree in Theatre from California State University Fullerton. Linda is currently involved in writing and producing film projects for Miramax and Revolution studios. She lives in Los Angeles with her husband Lee Flicker and daughter Keaton.

**GLENN CASALE** (*Director*) is thrilled to be back! Broadway: *Peter Pan* (Tony Award nomination Best Revival), filmed by A&E (two Emmy Awards). Off-Broadway: *The Property Known as Garland*; Studio 54: *Dragapella* (Drama Desk and Lucille Lortel Award Nominations for Best Production). International: For Stage Entertainment and Disney Theatrical: *Disney's The Little Mermaid*; *Disney's Beauty and the Beast*; and *The Wiz*. Tours and Regional Theater: *Disney's The Little Mermaid*; *The Hunchback of Notre Dame*; *Doctor Dolittle*; *Camelot*; *Ballroom*; *Wrestlers*; *From the Top*; *Company*; *Bingo!*; *Anything Goes* (Ovation Award-winning Best Musical) for Reprise, and *The Prisoner of Second Avenue*. Television directing credits include: ABC TV's *The Faculty* starring Meredith Baxter and *The Wayans' Brothers*. Glenn is on the staff of the California Musical Theater in Sacramento.

**KIM ARNETT** (*Choreographer*) is thrilled to be making her debut with WST. She actually started her dance career here in Philadelphia where she trained and performed with Pennsylvania Ballet out of high school. In June she was the assistant choreographer for *Joseph and the Amazing Technicolor Dreamcoat* with McCoy/Rigby Entertainment. Kim was in the Broadway/National Tour of *Peter Pan* starring Cathy Rigby which was filmed for A&E. She also was the

dance captain for the original Vegas company of *Mamma Mia!* as well as the 1st National Tour.

**CHRIS BURCHERI** (*Vocal & Music Direction*) is excited to be continuing his 4th season on WST's Mainstage with *Disney's Beauty and the Beast*. Previous favorites include *Young Frankenstein*; *Beehive*; *Disney's The Little Mermaid*; *Always... Patsy Cline*; *Cinderella*. He has also directed music on Broadway at Music Circus (*Cinderella*), Bucks County Playhouse (*Kinky Boots*), Rutgers-Camden, Arcadia University, and the WST for Kids series, where his musical arrangements have been heard in *A Christmas Carol*. He is a graduate of the U. Penn. Thank you to Bernard, Mark, and the entire Walnut staff. Love to Mom, Dad, and Maura.

**ROBERT ANDREW KOVACH** (*Set Design*) has had the honor of designing for WST since 2006. Special thanks to Bernard and Mark for the years of opportunities. My family and I appreciate it. Robert has designed for Off-Broadway, tours, and theatre throughout the US & Internationally. Robert and his team have designed and produced corporate events, general sessions, and keynotes for Fortune 500 companies including INTEL, Blockworks, Milwaukee Tool, and Buick GMC. <http://www.koventertainment.com>

**MARY FOLINO** (*Costume Design*) is currently Arcadia University's Costume Shop Manager and resident costume designer, having previously worked as the Walnut's Costume Shop Manager, and as the Costume Director of the Milwaukee Repertory Theater. Favorite WST designs include *Holiday Inn*, *Young Frankenstein*, *Rocky, the Musical*, *Cinderella*, and *Elvis, a Musical Revolution*. Many thanks to Bernard and the WST family, all my collaborators on this piece, and the amazing costume and wardrobe staff!

**MATT DEMASCOLO** (*Lighting Design*) is pleased to be returning to WST this season and working on this production of *Disney's Beauty and the Beast*. His past shows at the WST include *Beehive*; *Always... Patsy Cline*; *Cinderella*; *Escape to Margaritaville*. For the last 18 years, Matt has been the Lighting Systems Manager at Production Express, Inc. but is now the Technical Supervisor at here at WST. His theatrical work includes lighting productions at the Fulton Theatre such as *Elf*; *Million Dollar Quartet*; *Little Shop of Horrors*. His freelance lighting design work for local high schools includes shows like *West Side Story*; *Les Misérables*; *Hairspray*, and many more. He enjoys working with students in the educational environment and teaching young adults about theatre.

**ED CHAPMAN** (*Sound Design*) Happy to be returning, WST: *Disney's The Little Mermaid*; *Shrek*; *Young Frankenstein*; *In the Heights*; *Disney's Mary Poppins*; *The Wizard of Oz*; *Annie*. Broadway: *Leopoldstadt* (Associate Designer), *Ink* (2019 Tony-nomination Best Sound Design, Associate Designer) and *Travesties* (2018 Tony-nomination Best Sound Design, Associate Designer). Touring Productions:

---

---

# WHO'S WHO

*Disney's The Little Mermaid; A Christmas Story; How the Grinch Stole Christmas; Guys and Dolls; The Producers.* Other award-nominated work: *Holiday Inn* (2018 SALT Award nomination), *Mamma Mia!* (2016 Berkshire Theatre Award nomination).

**CARISSA THORLAKSON** (*Wig Design*) is a freelance wig and makeup designer. You may have seen her recent work in *Cinderella; Escape to Margaritaville; Rocky* here at WST. She has also designed for New York City Center, The Old Globe, A.R.T., Paper Mill Playhouse, McCarter Theatre Center, Hartford Stage, Lookingglass Theatre Company, Two River Theatre, Bay Street Theater, Delaware Theatre Company, Olney Theatre Center, and The Princeton Festival. She has served as a wig and makeup artist across the country. Carissa also creates custom medical wigs, cosplay wigs, and teaches classes in wigs and makeup. CThorwigs.com @wigician.

**KELSEY BROOKS** (*Make-Up Design*) Regional: WST: *Cat on a Hot Tin Roof*; REP: *In the Heat of the Night*; Pennsylvania Shakespeare Festival: *In the Heights; The Tempest; Sense and Sensibility; Lady Day at Emerson's Bar and Grill*; Eagle Theatre: *Xanadu*. Film: *Clifton Park; Cheer Up Charlie!; Wendy; The Four Dance At Night*. SFX: Hershey Park, Fright Factory. Love to Adam and the cats. @kelseylyzanne

**ELIZABETH HAROIAN** (*Stage Manager*) Thrilled to be back with WST for a third season! Select stage management credits: WST: *Cat on a Hot Tin Roof; Cinderella; Rocky*; NYU Tisch: *Further Than the Furthest Thing*; Basil Twist: *Symphonic Fantastique*; ATC: *The Pirate La Dee Da*; NYU Steinhardt: *The Secret Garden; Sister Act*; New London Barn Playhouse: *Grease*; Juilliard: *Richard III*. Last year, Liz was in Saudi Arabia managing a truly magical show with five international illusionists. She has worked with many academic programs including NYU Tisch, The Juilliard School, NYU Steinhardt, Atlantic, and ART/Harvard. Amid all the chaos remember to have fun!

**SIOBHÁN RUANE** (*Director of Production*) This is Siobhán's 11th season at WST. With over 20 years in the business, Siobhán has worked internationally as a Production Manager and Stage Manager. Previously, Siobhán held the faculty position of Stage Management Advisor at Florida State University's School of Theatre. Additional credits include Cirque du Soleil, Norwegian Cruise Line, Cirque Productions, and various regional theatres. Siobhán holds an undergraduate degree from Rutgers University, an MFA from the University of Delaware, and is (proudly!) originally from the Jersey Shore.

**BRIAN KURTAS**, CSA (*Associate Artistic Director*) has been associated with WST since 2007. He began his career here as a performer and in the professional apprenticeship program and has since dedicated himself to bringing artists together. He now

serves our artists and audiences in the various capacities of casting, directing, programming, and literary management, as his function is to identify the highest quality of artists for our historic theatre. His vision behind unforgettable live experiences and storytelling has become a creative solution from the stage to the screen - He spent 4 seasons as the Executive Producer of Gretna Theatre, has worked on television networks and films including TLC and HGTV, and helped create events and entertainment for brands such as T-Mobile and Walmart while at Live Nation. Originally from Lancaster, Brian is a proud Temple alum and a member of the Casting Society of America.

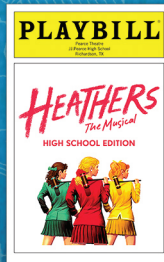
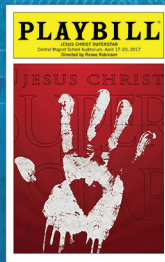
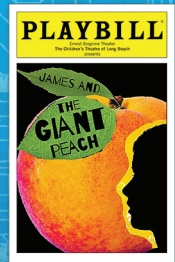
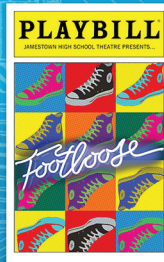
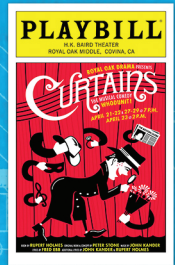
**MARK D. SYLVESTER** (*Managing Director*) Mark is proud to be celebrating his 30th season at WST. His extensive career has spanned Summer Stock to Broadway as an actor, stage manager, box office treasurer, theatre manager, marketing and public relations director and general manager. After several years working with commercial theatre, he has devoted his career to non-profit theatre companies since 1987. To date, Mark has been associated with more than 500 stage productions. An avid collector of musical theatre recordings, his collection contains over 3,500 cast albums from around the world. Widely regarded as a theatrical marketing expert, Mark lectures and consults with organizations internationally. He has served on several boards including seven years with the National Alliance for Musical Theatre where he now holds the honorary position of Board Emeritus and the Advisory Committee of Samuel French, the international play publisher and licensing company. With Bernard Havard he co-authored the book *Walnut Street Theatre*. Since he joined WST in 1994, it became the most subscribed theatre company in the world.

**BERNARD HAVARD** (*President and Executive Producing/Artistic Director*) Vox Populi (The Voice of the People) was written on WST Playbills in the 1800s. Whenever WST has strayed from a populist program, the theatre has gone bankrupt. When I came here 41 years ago, we had no programs and no audience. Today we enjoy one of the largest subscription bases of any theatre in the world. So, my thanks to our loyal audience and a warm welcome to newcomers who enjoy and believe in what we do. I admire the artists who dedicated their lives to the theatre and WST, particularly. Our theatre is a non-profit 501-C3 institution, and we rely on contributed income to extend our reach into the community. Last season we reached more than 26,600 students in our city schools. We have 39 trustees who give their time, wisdom, and contributions to help guide this historical treasure. I came to WST in 1982, and I am as excited now about our future as I was in the beginning. My heartfelt thanks to all who enter this theatre. For my biography, go to About Us on our website at WalnutStreetTheatre.org



# PLAYBILLder

# Create your own PLAYBILL® today!



# PLAYBILLder.com

PLAYBILLder® EXPRESS POWERED BY

MUSIC THEATRE INTERNATIONAL • CONCORD THEATRICALS  
R8H THEATRICALS • SAMUEL FRENCH • TAMS-WITMARK  
THE ANDREW LLOYD WEBBER COLLECTION

THEATRICAL RIGHTS WORLDWIDE • DRAMATISTS PLAY SERVICES



**WALNUT STREET THEATRE**  
825 Walnut Street, 215-574-3550

**BOARD OF TRUSTEES**

**President**.....**Bernard Havard**  
**Chair**.....**Francis J. Mirabello, Esq.**  
**Immediate Past Chair**.....**Scott Rankin**  
**Chairman Emeritus**.....**Louis W. Fryman, Esq.**  
**Chairman Emeritus**.....**Matthew Garfield**  
**Chairman Emeritus**.....**John D. Graham**  
**Vice Chair/Secretary**.....**Patrick Mullen**  
**Treasurer**.....**Robert L.B. Harman**

Jeffrey Ferro  
John Fidler  
Jack R. Garfinkle, Esq.  
Audrey Merves  
Richard A. Mitchell, Esq.  
Tanya Ruley-Mayo

Gene Schriver  
Daniel J. Schuller  
James D. Scully, Jr.  
Ellen Tobie  
David Wyher

**ALUMNI TRUSTEES**

Ashok N. Bakhru, Bruce Belzak, George M. Chamberlain Jr., Thomas J. Coultas, Louis J. D'Ambrosio, Joseph E. Ellis Sr., Barry Genkin, Terry Graboyes, Ramona Gwynn, Denise Daher Hodgson, Jeremy D. Johnson, Kenneth E. Kirby, Theresa E. Loscalzo (Esq.), Craig R. MacQueen, Kyle Anne Midkiff, Ann Marie Richter, Renee H. Rollin, Keith D. Schneck, Martin W. Spector, James M. Tholey

**HONORARY MEMBERS**

Ms. Carole Haas Gravagno,  
Hon. Mark Squilla, Ms. Lily Tomlin

**WALNUT STREET THEATRE STAFF**

**ARTISTIC**

**President and Producing Artistic Director**.....**Bernard Havard**  
**Associate Artistic Director**.....**Brian Kurtas**

**ADMINISTRATION**

**Managing Director**.....**Mark D. Sylvester**  
**Company Manager**.....**Daniel Ludwig**  
**Controller**.....**Michael S. Armento**  
**Assistant to the Controller**.....**Kristen Lamb**  
**Management Assistant**.....**Christina Taliu**  
**Audience Services Manager**.....**Angelia Evans**  
**Associate Audience Services Managers**.....**Aaron Bell,**  
**Katrina Dagenais**  
**Facilities Manager**.....**Bruce Myers**  
**Assistant to the Facilities Manager**.....**Tony Sample**  
**Facility Services**.....**Phillip Glenn, Camielle Johnson,**  
**Jonathan Martin, Ashura Merriweather,**  
**Charles Phillips, Victoria Robinson**

**DEVELOPMENT**

**Assistant Director of Development**.....**Dan Olmstead**  
**Development Associate**.....**BillyD Hart**  
**Interim Development Associate**.....**Lizzie Gumula**  
**Development Apprentice**.....**Thomas Smith**

**EDUCATION**

**Director of Education**.....**T.J. Sokso**  
**Associate Director of Education**.....**Amanda Pasquini**  
**Education Programs Manager**.....**Maya Chester Ziv**  
**Education Apprentice**.....**Jameka Wilson**  
**Teaching Artists**.....**Dave Allison, Julianna Babb,**  
**Jordan Bailkin, Hallie Berger, Andrea Cardoni,**  
**Hannah Catanoso, Elliot Davis, Walter Dodd,**  
**Nora Gair, Sharon Geller, Elizabeth Gumula,**

**Kelsey Hodgkiss, Annette Kaplafka, Brian Kurtas,**  
**Donovan Lockett, Lindsay Marcus, Kennedy McAlister,**  
**Taylor J. Mitchell, Domenica Passio, David Pica,**  
**Nicole Renna, Faith Sacher, Seraina Schottland,**  
**Leah Senseney, Connor Shields, Devon Sinclair,**  
**Arielle Sosland, Vanessa Sterling, Grant Uhle, Ali Walker**

**MARKETING**

**Director of Marketing and Public Relations**.....**Stephen Rapp**  
**Marketing Associate**.....**Jennifer Epstein**  
**Marketing and Public Relations Apprentice**.....**Tessa O'Donnell**  
**Box Office Treasurer**.....**Rick Dougherty**  
**Assistant Box Office Treasurer**.....**Tom Brzozowski**  
**Ticketing Services Manager**.....**Jeffrey Berry**  
**Associate Ticketing Services Manager**.....**Sonja Stornes**  
**Ticketing Services and Group Sales Coordinator**.....**Celia Hegarty**  
**Ticketing Services Agents**.....**Jason Boyer, Evelyn Deaton,**  
**Shaina Egan, Jerrod Ganesh, Maryann Kuzan,**  
**Christopher LeVere, Anne Mailey, Keeghan McLane,**  
**Marissa Molek, Leslie Monaco,**  
**Luke Solacoff, Madison Williams**  
**Outbound Sales and Telefunding**.....**Ann Marie Borget**

**PRODUCTION**

**Director of Production**.....**Siobhán Ruane**  
**Assistant Production Manager**.....**Megan Lampron**  
**Production Technical Supervisor**.....**Matt DeMascolo**  
**Production Apprentice**.....**Jess Fowler**  
**Stage Managers**.....**Michele Begley, Elizabeth Haroian**  
**Dance Captain**.....**Audrey Biehl Simmons**  
**Fight Captain**.....**Bonnie Kelly**  
**Stage Management Apprentices**.....**Matthew Owitz,**  
**Mackenzie Seewagen**

**2nd Assistant Stage Manager**.....**Adam Hoyak**  
**Technical Director**.....**Brian Froomjian**  
**Assistant Technical Director**.....**Eli Marsh**  
**Scene Shop Assistant**.....**Tyler Bogie**  
**Head Carpenter**.....**Jon Wheeler**  
**Carpenters**.....**Kerrin Frank, Charlie Margies, Jeremy Webb**  
**Carpentry Apprentices**.....**John Marsella, Carter Sinquefield**  
**Scenic Charge**.....**Leslie Curd**  
**Scenic Artists**.....**Thomasin Parnes, Lauren Sellers**  
**Scenic Apprentice**.....**Luccy Pickering**  
**Properties Manager**.....**Shannon O'Brien**  
**Properties Associate**.....**Leighann Westermeyer**  
**Head Properties Artisan**.....**Natalie Reichman**  
**Properties Artisan**.....**Matthew Barth**  
**Properties Apprentices**.....**Kylen Bailey, Kirken Craven,**  
**Tara Cunniffe**

**Costume Shop Manager**.....**Natalia de la Torre**  
**Assistant Costume Shop Manager**.....**Anya Loverdi**  
**Draper and Costume Associate**.....**Chloe Swidler**  
**Drapers**.....**Morgan Porter, Kayla Speedy, Abi Stenner**  
**Costume Apprentices**.....**Noel Morales, Loren Smither**  
**Stitchers**.....**Gretchen Ellis, Francesca Schnalke**  
**Wig and Make-Up Coordinator**.....**Claire Waid**  
**Wig Assistant**.....**Amari Callaway**  
**Wig and Wardrobe Apprentice**.....**McKenzie McClure**  
**Lead Dresser**.....**Alison Levy**  
**Dressers**.....**Andy Martinez**  
**Costume Stock Coordinator**.....**Elizabeth McNamara**  
**Stage Crew**  
**Head Carpenter**.....**Mick Coughlan**  
**Head Electrician**.....**Amber Faulhaber**  
**Head Flyman**.....**David Cain**  
**Head Sound**.....**Adam Orseck**  
**Head Props**.....**Valerie Bannan**  
**Seasonal Assistant Sound**.....**Ryan Erlichman**  
**Seasonal Assistant Lighting**.....**Kathryn Morgan**  
**Stage Crew Apprentice**.....**Victoria Sills**



**Actors' Equity Association (AEA)**, founded in 1913, represents more than 45,000 actors and stage managers in the United States. Equity seeks to advance, promote and foster the art of live theatre as an essential component of our society. Equity negotiates wages and working conditions, providing a wide range of benefits for its members, including health and pension plans. AEA is a member of the AFL-CIO, and is affiliated with FIA, an international organization of performing unions. The Equity emblem is our mark of excellence. [actorsequity.org](http://actorsequity.org)



UNITED SCENIC ARTISTS REPRESENTS DESIGNERS FOR THE AMERICAN THEATRE



MUSICIANS REPRESENTED BY THE AMERICAN FEDERATION OF MUSICIANS



BACKSTAGE EMPLOYEES AND SCENE SHOP EMPLOYEES ARE REPRESENTED BY THE INTERNATIONAL ALLIANCE OF THEATRICAL STAGE EMPLOYEES. (I.A.T.S.E.)



The Director and Choreographer are members of the **STAGE DIRECTORS AND CHOREOGRAPHERS SOCIETY**, a national theatrical labor union.



The mission of the Walnut Street Theatre Company is to sustain the tradition of professional theatre and contribute to its future viability and vitality. It does so through the production and presentation of professional theatre; the encouragement, training, and development of artists; the development of diverse audiences; and the preservation and chronicling of its theatre building, a National Historic Landmark.



Walnut Street Theatre is a member of the Greater Philadelphia Cultural Alliance, Citizens for the Arts in Pennsylvania, and the League of Historic American Theatres. Walnut Street Theatre receives state arts funding support through a grant from the Pennsylvania Council on the Arts, a state agency funded by the Commonwealth of Pennsylvania.



Accessibility Equipment, Training and Marketing provided by Independence Starts Here, the statewide cultural accessibility program of VSA PA/Amaryllis Theatre Co., jointly led in different regions in PA by cultural partners in that region. In Greater Philadelphia, Independence Starts Here is jointly led by Art-Reach, Inc.



ART-REACH

Walnut Street Theatre receives additional season operating support from Actors Equity Foundation, and Independence Foundation.



Access2Walnut Program graciously funded by PNC Arts Alive in Partnership with Art Reach.

## COMING ATTRACTIONS AT THIS THEATRE!

### MAINSTAGE

Our 2023–24 Season includes

- *Edward Albee's Who's Afraid of Virginia Woolf?* (Starts Jan. 9, 2024)
- *Groucho: A Life in Revue, the Musical* (Starts Feb. 13, 2024)
- *Beautiful – The Carole King Musical* (Starts March 26, 2024)

Buy a subscription or individual tickets at **215-574-3550**,

**WalnutStreetTheatre.org**  
or Ticketmaster.com, 800-982-2787

### WST FOR KIDS

- *Charles Dickens' A Christmas Carol* (Dec. 2–17, 2023)
- *Madagascar Jr.* (April 13–May 5, 2024)

### WALNUT STREET THEATRE SCHOOL

Contact us about our current classes and the Spring 2024 semester.

Call 215-574-3550, ext. 510  
or register online at  
**walnutstreettheatre.org**

# THANK YOU TO OUR GENEROUS SUPPORTERS!

Walnut Street Theatre wishes to express gratitude to the following individuals, corporations, foundations, and government agencies for their generous contributions in support of America's Oldest Theatre

## FORREST SOCIETY (\$25,000+)

|  |   |                                   |
|--|---|-----------------------------------|
| Dr. & Mrs. Anastasius C. Bandy               | PA Department of Community & Economic Development | Scott & Sharon Rankin             |
| Arthur Murray's Rising Star World Foundation | PA Department of Education                        | Louis and Bessie Stein Foundation |
| Hamilton Family Charitable Trust             | PECO  | Fund #2                           |
| Bob & Louise Harman                          | PNC Arts Alive                                    | Syde Hurdus Foundation            |
| The Hearst Foundation, Inc.                  | PNC Bank  |                                   |

## BOOTH SOCIETY (\$10,000+)

|                                      |                                     |                                  |
|--------------------------------------|-------------------------------------|----------------------------------|
| C&N Bank                             | Ken & Nancy Hellendall              | Pennsylvania Council on the Arts |
| CBIZ, Inc.                           | Herman Goldner Company              | REALPHA                          |
| CIGNA                                | Horace W. Goldsmith Foundation      | Royer Cooper Cohen Braunfeld LLC |
| Disney Worldwide Services            | Independence Foundation             | Gene Schriver                    |
| Essential Utilities, Inc.            | Johnson Kendall and Johnson Inc.    | James & Marlene Scully           |
| Jeff & Janie Ferro                   | The McLean Contributionship         | Roger & Kathi Smith              |
| Fulton Bank                          | Mr. & Mrs. Francis J. Mirabello     | Mark D. Sylvester                |
| Matt Garfield                        | Richard A. Mitchell & Marna Carlton | USLI                             |
| Garfield Refining, LLC               | Nationwide Private Client           | Joe & Kim Villani                |
| Bernard Havard & Judy Capuzzi Havard | The Neag Foundation                 |                                  |

## BARRYMORE SOCIETY (\$5,000+)

|   |  |   |   |
|---|--|---|---|
| Anne & Philip Glatfelter III<br>Family Foundation | The Ethel Sergeant Clark Smith<br>Memorial Fund                          | Grant and Nancy Karsner<br>Walter Kissel      | Pennsylvania Lumbermens<br>Mutual Insurance Company |
| Arthur Murray's Rising Star<br>World Foundation   | Ruth Fausak  | Joseph & Peter Lomax                          | Philadelphia Insurance<br>Companies                 |
| Bank of America                                   | Dennis & Jennie Franklin   | Sandie Mather                                 | REALPHA See Attributes                              |
| Blank Rome LLP                                    | The Haley Foundation   | Mr. and Mrs. Edward and<br>Regina J. Mitchell | Dr. Mitchell Rodman                                 |
| Dan & Reeve Benau                                 | Independence Blue Cross  | Maureen E. Molloy                             | Roger & Kathi Smith                                 |
| Lee Brooks  | Iron Hill Brewery  | Patrick & Jacki Mullen                        | Spark Therapeutics                                  |
| Drs. James Byers &<br>Stephanie Chuipeuk          | IVY Rehab/<br>EXCEL Physical Therapy                                     | Pat's King of Steaks, LP                      | TD Charitable Foundation                            |
| Daniel Comer                                      | Jane James Charity Fund<br>of the Princeton Area<br>Community Foundation | The Patricia Kind Family<br>Foundation        | UHS of Pennsylvania, Inc                            |
|   |  | Sharon Payne                                  | William M King Charitable<br>Foundation             |

## CUSHMAN SOCIETY (\$2,500+)

|  |                                      |                                      |  |
|--|--------------------------------------|--------------------------------------|--|
| AIG                                    | Brandon Havard                       | Mrs. Roberta Martin                  | Pugliese Associates                    |
| Archer & Greiner                       | Gail Heinemeyer                      | Robert Peter Miller                  | Mr. & Mrs. Vincent Redes and<br>Morgan |
| Baker Tilly US, LLP                    | Denise D. Hodgson                    | Paul Mirabello                       | Christopher Ritchie                    |
| Dan & Reeve Benau                      | Clara Huntzinger                     | Montgomery Family<br>Charitable Fund | Rowland & Elaine Smith                 |
| Jean Berg                              | Kathy & Dave Hychalk                 | Drs. Jonni & Roger Moore             | Jesse W. & B. Lois Stuart              |
| The Bohner Charitable Fund             | Jack Miller Family Foundation        | Christian and Noelle Noyes           | Marlene & Joe Testa                    |
| Bob & Cheryl Carfagno                  | Troy Johnson                         | NTIS/MDPINS                          | Thomas Jefferson University            |
| Estate of Philip F. Drach              | Justamere Foundation                 | Parkway Corporation                  | Dr. & Mrs. Alan and Edye Twer          |
| Mr. and Mrs. Timothy and<br>Jane Duffy | Ken & Elaine Kirby                   | Parx Casino                          | Stephanie Ward & Paul Merollo          |
| William Faris                          | Brian Kurtas & Jason Ketelson        | Lanny & Ann Patten                   | Ruth Anne & David Woolsey              |
| John & Janette Fidler                  | Mrs. Jane Lane                       | Robert and Terry Patterson           | WSFS CARES Foundation                  |
| Rhoda & Louis Fryman                   | Ginny & Gordon Lapinski              | Pennsylvania Lumbermens              | Anonymous (3)                          |
| Patrick & Shelly Guise                 | Paul J. Marcotte &<br>Karen A. Brown | Mutual Insurance Company             |  |



## JEFFERSON SOCIETY (\$1,500+)

|                             |                        |                          |                          |                         |
|-----------------------------|------------------------|--------------------------|--------------------------|-------------------------|
| Susan Adamczyk              | Vic & Eva Dawson       | Gail Heinemeyer          | Mario & Rosemarie        | Mr. & Mrs. Richard T.   |
| Paul M. & Mary Lee          | Allison DeCaro         | James Herman, Esq. &     | Nicolaio                 | Taylor                  |
| Anderson                    | Drs. Bruce & Toby      | Brenda Lee Eutsler, Esq. | Nochumson P.C.           | Mr. & Mrs. Jim Tholey   |
| Dr. Sucha & Mr. Michael     | Eisenstein             | Denise D. Hodgson        | Eileen Parsonage         | Ellen Tobie &           |
| Asbell                      | Anthony & Laura        | Henry & Paula            | Rev. Lucy Pierre         | Larry Gilberti          |
| Mr. Robert J. Bowen         | Fiorenza               | Hollencamp               | Mr. Jack and Hermene     | Tompkins Insurance      |
| Roger Braunfeld             | Michelle Franklin      | Intech Construction      | Potts                    | Lori & Robert Scott Uhl |
| Nancy Brodie                | Jane and David Galli   | Jesse Jones              | Bruce & Cindy Rangnow    | Mr. & Mrs. Paris        |
| Michael J. & Alice L. Brown | Jack & Ellie Garfinkle | Thomas Kay               | Robert & Marilyn Rubin   | Washington              |
| Kathryn Brunner             | Larry & Nancy George   | Mary Kozar               | Joyce Seewald Sando      | Victoria Werth &        |
| William & Joann Butler      | James & Wendy Gerber   | Ms. Mary H. Ladd         | Carl Schoenborn          | Kevin Jon Williams      |
| Joseph & Suzanne            | Priya Gor &            | Ms. Abbie Lampe          | Kathy & Don Shannon      | Eugene and Bess Wien    |
| Calabro                     | Dariusz Sholevar       | Stephen & Beverly Levin  | Mr. Roy Shubert          | Sally West Williams     |
| Richard A. Mitchell &       | Ron & Sandy Gould      | Meridian Bank            | Rita A. Silvestri        | Rachel & Brian Wilner   |
| Marna Carlton               | Mr. & Mrs. John Hammer | Mitts Law, LLC           | William R. Snell, Esq.   | WipFli LLP              |
| Wendy & Joseph Casillo      | Tom & Rosemary         | Steven & Deborah         | Dave & Chris Stanton     | Debbie & Ron Wolf       |
| Keith Schneck &             | Hampton                | Mongiardo                | Dr. & Mrs. Frank Stearns | Anonymous (4)           |
| Linda Chisholm              | Kathryn S. Hayes &     | Dr. Morton & Rhea        | Dom Stellato             |                         |
| Virginia R. Cragg           | Victor J. Tortorelli   | Mandell                  | Sheryl & Ted Strand      |                         |

## KEMBLE SOCIETY (\$1,000+)

|                          |                           |                        |                           |                          |
|--------------------------|---------------------------|------------------------|---------------------------|--------------------------|
| The A Cappella Project   | George Chmielewski        | Ed & Vaia Gilchrist    | Andrew & Cherly           | Mr. & Mrs. Robert K.     |
| Philadelphia             | Chrisitan R. & Mary F.    | Chris & Margie Giles   | Masterman                 | Roush, Jr.               |
| Matthew & Megan Abbott   | Lindback Foundation       | Mr. & Mrs. John D.     | Patrick McGinley          | John & Lauren Sacks,     |
| David Adelman            | Christopher Console       | Graham                 | Pat & Harold McIlwain     | Property Management      |
| Mr. & Mrs. Raymond and   | Gary Cosgrave             | Annmarie Hafer &       | Jeanette & Richard Merion | Redefined                |
| Mary Alimenti            | Kimberly & Walter         | Jake Oddo              | Jim & Mary Ann Miles      | Stephen M. Sader         |
| Marylee & Stuart Alperin | Cwietniewicz              | Joe & Otti Hallinan    | Joseph E. Miller, Jr.     | Ellen Schwartz &         |
| Will Anderson            | Mary Dauphinais &         | Marguerite and         | Family                    | Jeremy Siegel            |
| Mrs. & Mr. Emma Beckers  | Thomas Kenney             | Christopher Hamilton   | Patrick Moeller           | Robin Sherwood &         |
| Joseph and Barbara       | Mr. & Mrs. William P. and | Ms. Linda Harvey       | NJM Insurance Group       | John Zimmerman           |
| Bernert                  | Susan P. Degler           | Lynda & David          | Nancy Nolan               | Lynne Delanty Spencer    |
| David & Janet Breskman   | Dolfinger-McMahon         | Herendeen              | Thomas P. Obade, MD       | Regina & DJ Sukanick     |
| Lee Brooks               | Foundation                | Alice Irene Hudson     | Stuart & Carol Ockman     | Mr. & Mrs. Sylvan Taub   |
| Tracy A. Broomall        | Sam Driban &              | Becky and Eric Hunt    | Hayler, Robbie &          | Lisa Topalovich          |
| Drs. Michael B. Dabrow & | Marilyn Neuhauser         | Tom & Jo Hyden         | Meighan Osborn            | Dr. & Mrs. Alan and Eady |
| Manette K. Fine          | Dr. Charles & Mrs.        | Julie & Jerry Jacobs   | Mr. Joseph Ostaszewski    | Twer                     |
| Jeffrey & Diane Bush     | Brenda Driben             | Mr. Richard Johnson    | Deborah Ott &             | Frank & Fran Urso        |
| Calabrese Charitable     | Dennis Dunlap             | James T. Johnston, Sr. | Angel Macasieb            | Peter & Viviana          |
| Fund - Mr. Christopher   | Robert J. Eberle Jr.      | Joy Karsner &          | Richard M. Parison, Jr.   | Van Deerlin              |
| J. Calabrese and Mrs.    | Jeff & Lyn Evans          | Brian Barton           | Marcia & Don Pizer        | Frazier Van Velsor       |
| Cathleen A. Calabrese    | Kalman & Suzan Fine       | Holly Krause & Family  | Wayne & Karen Ranbom      | Anonymous (2)            |
| Mayor & Mrs. Edward      | The Fox Foundation,       | Suzanne Lemley         | Mr. Kevin A. Roach        |                          |
| Campbell                 | In Memory of              | Beverly and Stephen    | Ann Robinson              |                          |
| George M. Chamberlain    | Rex & Carol Fox           | Levin                  | Drs. Brad & Elizabeth     |                          |
| Grace Spampinato &       | Michelle Franklin         | Carol & John Little    | Robinson                  |                          |
| Edward John Charlton     | Susan M. Garber           | Mr. & Mrs. Marchioli   | Leonard M. Rosenfeld      |                          |

## PRODUCING ANGELS (\$500+)

|                             |                                   |                              |                                |                                |
|-----------------------------|-----------------------------------|------------------------------|--------------------------------|--------------------------------|
| Gerry Abelson & June Idzal  | Mr. and Mrs. G. Sterling Coyne II | Judith Guise                 | Stu & Sandy McGee              | Arthur & Marie Salvagno        |
| Actors' Equity Foundation   | Richard & Diana Crean             | Ramona Gwynn                 | Ms. Elynn McMullin             | Maureen & Fred Selby           |
| Roseann & Edward Adamczyk   | Tom & Sue Crop                    | Bruce & Alice Hudson         | Ms. Kyle Anne Midkiff          | Donna & Jerry Slipakoff        |
| George Ahern                | Cumberland Advisors               | Sharon Hoffberg              | Frances Miller                 | Jon & Jean Snyder              |
| Janice Baldwin              | Gail W. Dillon                    | Tom & Joyce Howley           | Rick Moog & Pat Martin         | Eric Spare                     |
| Bank of America             | Susan DiPaolo                     | Bruce & Alice Hudson         | Michael & Karen Morgan         | Roman and Lynne Tatarowicz     |
| Rena & Sam Barnett          | Dr. Charles & Mrs. Brenda Driben  | Robert & June Hudson         | Sandy & Todd Murray            | Mr. & Mrs. Richard T. Taylor   |
| Mark Barrett                | Mr. Pat Egan                      | Jim & Carol Hunsicker        | Ms. Emma Nashner               | James & Lisa Turner            |
| Ms. Mary Barry              | Dr. Beverly Emanuel               | In Memory of Rebecca Capuzzi | John Oates & Nikki Beiden      | Joseph & Sandra Vasta          |
| Bruce C. Belzak             | Arthur & Eileen Etchells          | In Memory of Anne Jones      | Mrs. Joan Palitz               | Mr. & Mrs. Mickey Velez        |
| Barbara & Brian Binney      | Jeffrey Ettinger                  | Ginny & Frank Jackson        | Matthew Pettigrew              | Joseph & Kimberly Villani      |
| Amy Bohner                  | Sean & Amy Fahey                  | Mr. & Mrs. Gerard Johnson    | Marc Platitzky                 | Donna Visioli & Cesar Silebi   |
| Andrea Bowers               | Anne M. Farrington                | Mr. Robert W. Jung           | Patricia H. Polinsky           | Lew & Hella Volgenau           |
| John & Linda Braceland      | Joel & Carol Fleisher             | Marcia & Ned Kaplan          | Patricia Pomeranz              | Beau & Valerie Walton          |
| Donna Britt                 | Brandon Ford                      | Norma Kelly                  | Radio Dial Marketing -         | Stephanie Ward & Paul Merollo  |
| Lee Brooks                  | Elizabeth Freeman                 | Mr. & Mrs. W.A. Kline        | Tom and Chris Schiller         | Virginia R Cragg               |
| Fusun Bubernack             | Rick and Julie Frost              | Karen & Robert Landman       | Dr. & Mrs. Christopher Rapuano | Russ & Carol Whitman           |
| Kaye Bunkin                 | Nicole Fryer                      | Alexis Langella              | Carl & Donna Robinson          | The William Goldman Foundation |
| Yvonne & Bruce Burgess      | Tong Ming Fu                      | Mr. Greg Liddle              | The Rouse Family               | Jan Wright                     |
| Bransby and Margaret Bushey | Gerhart & Anne Klein              | Rafael & Carol Lissack       | Charitable Trust               | Maureen & Joe Yanoshik         |
| France Carmody              | Charitable Fund                   | William Lowry                | Bruce & Susan Rosenbam         | Elizabeth M. Young             |
| Natalie Caruso              | Robert Gilliam                    | Ms. Vanessa Mapson           | Sally & Edwin Rosenthal        | Gina T. Zegel                  |
| Jane M. Cohen               | Stephen Glaudel                   | Michael and Sam Markovitz    | Siobhan Ruane                  | Anonymous (5)                  |
| Dr. Todd & Wendi Cohen      | Arlene Goldberg                   | Debbie & Elliott Maser       | Robert & Marilyn Rubin         |                                |
| Comcast Corporation         | Gail & Samuel Goldstein           | Calvin and Tanya Mayo        | Mary & Paul Rutter             |                                |

## BENEFACTORS (\$250+)

|                                 |                            |                                 |                                 |                             |
|---------------------------------|----------------------------|---------------------------------|---------------------------------|-----------------------------|
| Lee Aaron                       | Dr. & Mrs. David Capuzzi   | Ms. Mary Jane Griffith          | Joel & Barbara Luber            | Wayne & Karen Ranbom        |
| Charles Adams                   | David Carey                | Douglas & Epiphany Grisbaum     | Patricia Lukaszow               | Linda Reedy                 |
| Mary Beth & Aaron Adams         | Ralph Carey                | Linda Gussie                    | Joe & Olena Maloney             | Dr. & Mrs. Melvyn Richter   |
| M. Faith Angell &               | Mrs. Kathryn G. Carlson    | Elizabeth Harrop & Ben Bond     | Richard & Kathleen Mayberry     | John & Peggy Sabo           |
| Kenneth Carobus                 | Susan Casey                | Kathy Hoffman                   | Philip & Patricia McAloon       | Patrick & Donna Smith       |
| Stephen and Domenick            | Ken Cenci &                | Mr. & Mrs. John R. Hogan        | Rita A. McBride                 | Maryrose Smeohek            |
| Angilletta                      | Nora McElean-Hopson        | Sean & Larry Holbert            | Carol & Steve McKinley          | Robert Snyder               |
| Dr. Brandt Baldwin              | Ms. Nancy L. Cervino       | Sandra Horwitz                  | Joseph & Trina McSorley         | Gregory & Marlena Stratof   |
| Dr. & Mrs. Kenneth J. Basolick  | Dr. & Mrs. Howard Cetel    | Richard and Becky Hunt          | Miriam & Stan Meltzer           | Mr. & Mrs. Donald C. Tantum |
| Barbara & Brian Binney          | Chubb Corporate Giving     | Dr. & Mrs. Geza Incze in        | Mary Middleman                  | John & Rochelle Thompson    |
| Lucy Boardway                   | Sharon Coghlan             | memory of Robert I. Incze       | Marjorie Miller                 | Mr. Wayne Tobolski          |
| Daniel Bosin                    | Dr. Todd & Wendi Cohen     | Dr. Charles Intenzo             | Kathleen Mitchell               | Susan & Robert Tribit       |
| Michael Bove                    | Robert & Deborah Cohen     | James & Patricia Mayhew         | Maureen E. Malloy               | Richard Vanberg             |
| Lisa Boyell                     | Virginia R. Cragg          | Charitable Fund, a Donor        | Patricia M. Moore               | Sarah & John VanBuren       |
| Mr. & Mrs. Paul and Brenda      | Mary M. Creekmore          | Advised Fund of U.S.            | John O'Hara                     | Walter Vogler               |
| Branson                         | Sophie & Robert D'Agostino | Charitable Gift Trust           | Suzanne & Jules Olita           | Michelle Weinstock          |
| Mark Branson &                  | Ms. Sharon A. Dennison     | Dr. & Mrs. Sylvester Kohut, Jr. | Rick Osman                      | Len Weiser                  |
| Jacqueline Meckwood             | Dr. Diaz-Arastia           | Homi & Shireen Kapadia          | Robert Overell                  | Mr. Ulew Werley, Jr.        |
| Mr. & Mrs. Henry Brasteter, Jr. | Jim DiCarlo                | Dennis Keleshian & Chris Dostal | Susan Peck                      | Mr. & Mrs. Howard White     |
| Mr. & Mrs. Thomas E.            | Kevin & Barbara Dillon     | John & Barbara Kelly            | Dr. & Mrs. Bernard & Joy Pekala | Mr. Thomas Wholey           |
| Brightman                       | Janet Driscoll             | Jeff Walsh & Mark Klingensmith  | Linda Penza                     | David & Kathleen Wojcik     |
| Joyce Brody                     | Helen Dungan               | George & Patricia Kroculik      | L. Stephan & Rochelle Perchick  | Sandra Zorodansky           |
| Mr. Anthony Bruno               | Claudia & John Dustin      | Scott and Rita Ann Lamb         | Mr. & Mrs. Steven B. Pinsky     | Susan & Kevin B. Zebrowski  |
| Mr. and Mrs. Raymond Bryant     | Kellie & Mike Feehan       | Joe & Andrea Leahy              | Susan Pitcher                   | Robert Zimet                |
| Ms. Maxine Bryant               | Ms. Ellen Slott Fisher     | John & Daniela Leone            | Mr. Frank Pittner               |                             |
| Susan Bunch                     | Mr. & Mrs. Robert Garofola | Harry & Carol Leopold           | Mrs. Nancy Pliskin              |                             |
| Mr. & Mrs. Christopher Burks    | Ann and Carl Gersbach      | Victoria Levesque               | Ms. Frances Pliskin             |                             |
| Joseph & Suzanne Calabro        | William Greenberg          | Mr. & Mrs. James Love           | Rocco Pugliese                  |                             |

Contributions made to Walnut Street Theatre between July 1, 2022 and August 5, 2023. Additional supporters are gratefully acknowledged online at [walnutstreettheatre.org/support/ways-to-give](http://walnutstreettheatre.org/support/ways-to-give).

Every effort has been made to ensure this is a complete list; if your name is listed incorrectly, please contact the Development Office at 215-574-3580.

## PLATINUM STAR VOLUNTEERS

Lee Aaron  
Laurie & Barry Altmark  
Mrs. Cathanne Bart  
Carol E. Brown

Kim M. Bryant  
Deborah Burton  
Ken Cenci &  
Nora McElean-Hopson

Randi Chud & Bob Frey  
Jim DiCarlo  
Marsha A. Flager  
Maryanne Giampapa

Blossom Gica  
Jean & Larry Holbert  
Patricia McAloon

Anne J. Mitchell  
Barbara Ponczek

## POP REED LEGACY SOCIETY

The Pop Reed Legacy Society recognizes individuals who have made provisions for Walnut Street Theatre through a planned gift. Because of their commitment to keeping our flame eternal, we know that our legacy will burn bright for future generations of audiences, artists, and students alike.

Anastasios and Anastasia Bandy\*  
Bruce Belzak  
John J Burns\*  
Joseph & Suzanne Calabro  
George Chamberlain  
Philip Drach\*

Jeremy Edgediffe-Johnson  
Harold Farrey\*  
Rhoda & Louis Fryman  
Bruce & Terri Goldberg  
John & Liz Gontarz  
Sylvia Green\*

Gary Grob\*  
Bernard Havard & Judy Capuzzi  
Havard  
Ken & Nancy Hellendall  
George L James III\*  
Don & Diane Kalodziejski

Carol Lange  
Lloyd Lewis\*  
Miranda Markart  
Joan Prewitt\*  
Kevin & Jane\* Roach  
Dr. Harry Rosenthal

Rebekah Sassi  
Martin Spector  
Mark D. Sylvester  
Thomas C Wiernicki\*

\*Deceased

## CAPITAL CAMPAIGN

In acknowledgement of contributions made to *The Future Lives Here* Expansion Project, Walnut Street Theatre is humbled to thank the following donors of \$250+.

George J. Ahern  
Arthur Murray International, Inc.  
Mr. & Mrs. John Ash  
Dave & Bill Bailey  
Andrew and Melissa Baumbach  
David S Blum &  
Mark B Woodland  
Tom & Amy Bohner  
Dolores & Ronald Bowlan  
Mr. & Mrs. Warren Brandies  
Drs. Lee & Ellen Brooks  
Drs. James Byers &  
Stephanie Chuipek  
Dr. & Mrs. David Capuzzi  
Natalie Caruso  
Dr. Todd & Wendi Cohen  
Olympia Colasante  
Sally & Tom Coultres  
Charles J. Denny  
Gary & Marlene Dworkin  
Beverly S Emanuel  
Jeff & Lyn Evans  
Sean & Amy Fahey  
Jeff & Janie Ferro  
Dr. & Mrs. William G. Field

Rhoda & Louis Fryman  
Matt Garfield  
Jack & Ellie Garfinkle  
Dr. & Mrs. Robert J. Geller  
Michele M. Gendron  
George Boehm  
Gail & Samuel Goldstein  
Janis Goodman  
Mackenzie & Joshua Gross  
Patrick & Shelly Guise  
Ramona Gwynn  
Guy Hackney  
Helen M. Hall  
Tom & Rosemary Hampton  
Bob & Louise Harman  
William D. Hart  
Bernard Havard &  
Judy Capuzzi Havard  
Gillian Herschman  
Alicia & John Hlywak  
Denise D. Hodgson  
John & Eileen Hogan  
Tom & Paula Hollencamp  
Bruce & Alice Hudson  
Mr. & Mr. Huphoefwicz

Kathy & Dave Hychalk  
In Memory of Jane Lydon Kappel  
Catharine Keim  
Kent Family  
Alan & Henrietta Kiel  
Walter Kissel  
Carol & John Little  
Stephen E. Lore  
Mr. & Mrs. Ted Latz  
Debbie & Elliott Maser  
Philip & Marjorie Masters  
Patricia & Philip McAloon  
Dr. Donald McGuigan, D.D.S.  
Michael & Deborah McKee  
Louis and Bessie Stein  
Foundation Fund #2  
Arthur P. & Marjorie L. Miller  
John W. Mills  
Mr. & Mrs. Francis J. Mirabello  
Richard A. Mitchell  
Steven & Deborah Mongiardo  
David & Lyn Montgomery  
Robert Basile & Marie Mooney  
Drs. Jonni & Roger Moore

Mrs. and Mr. Margaret &  
Mark Margan  
Maria & Steve Needles  
Lynn & Cherie Oakes  
Pennsylvania Lumbermens  
Mutual Insurance Company  
Daniel W. & Chieeng K. Pitchford  
PNC Bank  
Philip & Diana Racobaldo  
Scott & Sharon Rankin  
Earl & Felicia Rehmman  
Kevin & Jane Roach  
Dolly Beechman Schnall  
Keith Schneck  
Carmyn J Schultheis  
Kathy & Don Shannon  
Dick & Maria Shroy  
Adam & Christine Sigal  
Jon C. & Karen P. Sirlin  
Syde Hurdus Foundation  
The Arcadia Foundation  
The Fox Foundation,  
In Memory of Rex & Carol Fox  
The Otto Haas Charitable Trust  
Charles & Clarice Thum

Robert & Cheryl Traub  
Meryl Udell & Kelci  
Todd & Barbara Vanett  
Miguel Velez &  
Catherine DeGroot  
Margaret & Rick Volpe  
Timothy & Leora Wile  
Richard Woosnam  
Maryann Ziembra  
Anonymous (6)

# PLAYBILL fringeSHIP

AUGUST 8-15  
EDINBURGH, SCOTLAND

# 2024



Playbill proudly presents the opportunity to experience the internationally acclaimed Edinburgh Fringe Festival in a first of its kind adventure on board the Playbill FringeShip. We are thrilled to bring you the Ambassador Cruise Line's *Ambition*—a sustainable and modern cruise ship—as the inaugural Playbill FringeShip for the 2024 Edinburgh Festival Fringe.

The beautiful and recently renovated ship will be the official 'Floatel' by the Fringe, docked in the buzzing port district of Leith. Playbill FringeShip will have direct transportation to and from the festival, as well as bringing the life and vibrancy of Edinburgh Festival Fringe on board.

Along with ultra-comfortable lodging in an array of accommodations on board, all guests

of the Playbill FringeShip will enjoy a number of amenities on and off the ship, including:

- Breakfast, lunch, and dinner every day in our many restaurants and lounges, paired with a drink package of your choice
- Exciting Fringe entertainment within the FringeShip's state-of-the-art theatre and cabaret lounge, for onboard guests only
- Access to roundtrip coach service from Leith to the center of Edinburgh
- Wellness center, gym, two swimming pools, and a top deck open-air lounge with a pizza parlor

Make your stay at Fringe Festival easy and comfortable. Join us on the Playbill FringeShip!

**Prices starting at \$225 per day, per person!**







Clockwise from top left: Musician from The Ambling Band; *Kathy and Stella Solve a Murder Mystery*, Photo: Mihaela Bodlovic; Traditional Dancer, Royal Mile; Fringe Festival Crowd, Royal Mile; *Feeling Afraid As If Something Terrible is Going to Happen*, Photo: Mihaela Bodlovic; *Mass Effect*, HIMHERANDIT Productions.



**PLAYBILL**  
**fringeSHIP**  
**PLAYBILLFRINGESHIP.COM**



# Decidedly Different. Decidedly Engaging.

You've worked hard for these carefree days and now it's time to enjoy them. A day at our continuing care retirement community might include a session in the floral design studio, a book discussion group, or a game of pickleball. Plus, Philadelphia's cultural resources are close at hand. There's always something interesting to do at Dunwoody Village. Contact us today to find out more.



**A Continuing Care  
Retirement Community**

★★★★★  
Five-Star Rated Healthcare

**(610) 359-4400 | [www.dunwoody.org](http://www.dunwoody.org)**

3500 West Chester Pike • Newtown Square, PA 19073-4168

Independent Living • Rehabilitation • Personal Care • Skilled Nursing • Memory Support • Home Care



**Pet Friendly**