



WALNUT STREET THEATRE

PETTER  
AND THE  
STAR  
CATCHER

A Grownup's Prequel to Peter Pan

*STUDY GUIDE*



## SHOW SYNOPSIS

*PETER AND THE STARCATCHER* is a grownup's prequel to Peter Pan. When starcatcher-in-training Molly meets an orphan boy longing for a home, they embark on the adventure of a lifetime. You'll be whisked away on a breathtaking quest to answer the question: how did a boy named Peter become the boy who never grew up? *PETER AND THE STARCATCHER* takes a hilarious romp through the Neverland you never knew. In this Tony Award-winning play with music, a dozen brilliant actors play more than 100 unforgettable characters using their enormous talent, ingenious stagecraft and the limitless possibilities of imagination. This swashbuckling production will have you hooked from the moment you let your imagination take flight!

## DISCUSSION QUESTIONS

### BEFORE THE SHOW

- Has anyone ever been to a live play before? How was it different from television or a movie?
- What is the difference between a play and a musical?
- Have you ever seen the movie Peter Pan? How will the experience be seeing a live production of similar characters?
- Have you ever felt like you never want to grow up? Have you ever felt like you wished you could grow up faster?
- What's your favorite place to go for an adventure?

### AFTER THE SHOW

- Did you enjoy this performance? What was your favorite part?
- Who was your favorite character? Why?
- How was the experience seeing *Peter and the Starcatcher* live different from watching the movie Peter Pan?
- Identify some similarities you noticed between *Peter and the Starcatcher* and Peter Pan. Identify some differences.



## THEATRE 101



### Ever wondered how to put on a play?

There are many different elements that go into putting a show up on its feet. Please review the following with your students:

**PLAYWRIGHT** The playwright writes the script.

**DIRECTOR** The director is in charge of orchestrating the entirety of the production. They lead the actors, designers, and production crew to put the show on its feet.

**COSTUME** What the actors wear during the show.

**SCENERY** Everything on stage (*except props*) used to represent the place at which action is occurring.

**PROPS** All physical items on stage with the exception of the scenery. This includes lamps, chairs, pens, paper, books, and more!

**LIGHTS** Stage lights illuminate the actors so that they look their best. The colors used, focus of the light, and amount of lighting can really set the mood and environment of a scene.

**SOUND** Everything that you hear during a performance that does not come from the actors.

**ACTORS** The actors are the people that perform the show onstage.

**AUDIENCE** The lucky people that get to watch the show. New to being an audience member? Follow these rules and you will be a natural!

### AUDIENCE RULES

- ◆ Unlike a movie, the actors are performing in front of you. They can see everything that you do. Talking, sleeping, poking your neighbor, or making noise during the performance distracts the actors and others around you.
- ◆ Don't bring electronics to the performance. The use of cell phones, cameras, computers, tablets, and video game devices are **not allowed**.
- ◆ Use your better judgment on when to laugh, clap, and/or cry during the performance. But don't forget to clap at the end of the show!
- ◆ Stay in your seat during the performance.
- ◆ Make sure you go to the bathroom *before* the show starts.

## TRY IT YOURSELF!

### DIRECTIONS

Give students a chance to act out a scene from *Peter and the Starcatcher* Before jumping into the performance, think about all of the elements that go into a play. Are there any props that we can use to help improve the scene? Where are the characters when this scene is taking place? What might the scenery look like?



### SAMPLE SCENE

**MOLLY:** Those little bits are starstuff. The trunk in Slank's cabin is full of it. There's some in here too, in case I'm ever in trouble.

**BOY:** Starstuff??? Lemme see!!

**MOLLY:** NO!! It changes people if they touch it.

**BOY:** How?

**MOLLY:** Different ways, depending on what they want to be.

**BOY:** So if somebody gets their hands on this starstuff and

**MOLLY:** and they're evil and greedy like Genghis Khan, or they're hungry for world domination like Caesar or Napoleon or, you know, Ayn Rand

**BOY:** Who's that?

**MOLLY:** Uch, didn't you learn anything at that orphanage?

**BOY:** Was kinda busy trying not to die.

**MOLLY:** Oh.

**BOY:** So if starstuff's so dangerous, why're you after it?

**MOLLY:** I'm a Starcatcher. We have special powers that we use in secret, to keep starstuff away from tyrants who try to rule the world.

**BOY:** You mean, like Queen Victoria?

**MOLLY:** God Save Her. And no, that's different. She doesn't need starstuff to rule the world. She's British.

**BOY:** So you're a, what is it?

**MOLLY:** Starcatcher. There's only six and a half of us on the planet.

**BOY:** Six and a half?

**MOLLY:** I'm still an apprentice.

**BOY:** Okay, so prove it.

**MOLLY:** What?

**BOY:** Go on, amaze me with your special powers.

**MOLLY:** It's not a magic show. I'm not like some magician guy.

**BOY:** Well, I mean if you can't actually do anything...

**MOLLY:** Fine, whatever. To have faith is to have wings.

### ACTIVITY: SEEING THE WORLD IN DIFFERENT WAYS in the HOT SEAT!

#### IT'S HOT SEAT TIME!

A story can change depending on who tells it. You've gotten to a chance to meet the characters in *Peter and the Starcatcher* and learn about their personality traits throughout the story. Now it's your turn to become the characters by expressing their viewpoints in words and styles that you help to create!

**STEP 1:** Set up a "hot seat", which is a single chair in front of your classroom.

**STEP 2:** One by one, each member of your class should take a turn in the "hot seat". When it's your turn, choose one of the characters from *Peter and the Starcatcher* and introduce yourself in the voice and manner of the character you have chosen.

**STEP 3:** Find an important event from *Peter and the Starcatcher* and ask the "characters" in the "hot seat" questions about how these events affect them.

#### FOLLOW-UP

- After students have interviewed several "characters", discuss how the characters' viewpoints differed. How were they alike?

#### VARIATIONS:

- Instead of acting out the characters' viewpoints, write about them in diary entries.
- How would the characters respond to events in your life? How would they respond to current events happening today?



## STUDENT ACTIVITY: First Impressions

### FIRST IMPRESSIONS

- When Molly first meets Peter, she sees him as a lowly orphan boy whose first impression isn't very charming. She later discovers his true heroic nature. Theatre has many first impressions.
- What were your first impressions of the characters in *Peter and the Starcatcher*? Did your opinion change throughout the show? Consider what happened to change your opinion.
- **WRITE** a few words about each character, below, describing your first impression when they were introduced in the play and then write a few words describing if your impression changed as you learned more throughout the show.

MOLLY: \_\_\_\_\_

BOY (PETER): \_\_\_\_\_

SLANK: \_\_\_\_\_

BLACK STACHE: \_\_\_\_\_

SMEE: \_\_\_\_\_

## STUDENT ACTIVITY: SPACE JUMP!

*Peter and the Starcatcher* has many scenes set in various locations throughout the play—this classic Improvisational game allows young actors to jump in and out of various scenes while maintaining character.

1. Four students go up on stage.
2. Number the students 1-4
3. The student who is number 1 comes onto the stage. The audience thinks of a scenario for student 1. For example he/she may be in a zoo.
4. Student number 1 then begins an improvisation about the given scenario. When you feel it has gone on enough, usually about 20 seconds you call **Space Jump!**
5. Student 1 then freezes and student 2 comes on stage. They use the pose student 1 is frozen in to inspire a new scene.
6. The two actors then continue on until again you feel it has been long enough and again call **Space Jump!**
7. This same process happens for students 3 and 4.
8. Once the final scene, which should have all 4 students in, has been going for enough time you again call **Space Jump!** Student 4 then leaves the scene and the scene reverts to what the 3 students were doing before.



## STUDENT WORKSHEET: WHAT DID HE DO?

### DISCUSSION

A story has a beginning, a middle, and an end, but a character's life goes on after the last page, or after the curtain falls. What DOES Peter Pan do?

### DIRECTIONS

- What happens after the curtain falls?
- Draw or write a story describing what happens to the characters after the end of the play.

### LIKE THE SHOW? LET US KNOW!

Send letters or drawings to:

Walnut Street Theatre

ATTN: Education Department

825 Walnut St.

Philadelphia, PA 19107





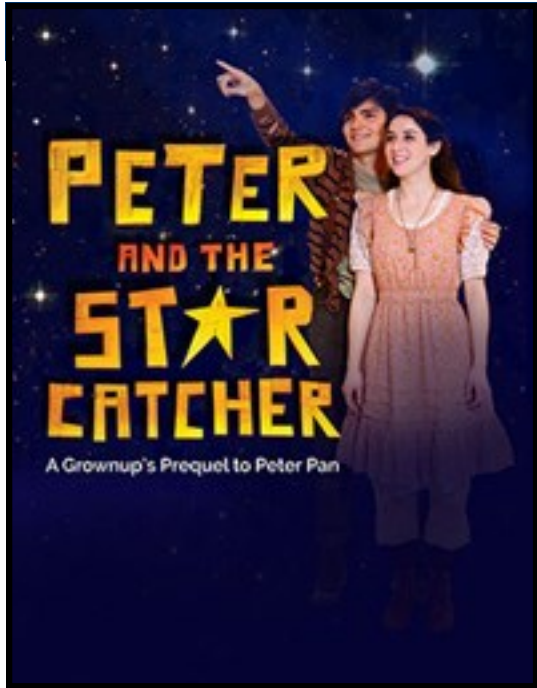
# WALNUT STREET THEATRE

## BIOGRAPHY

Walnut Street Theatre has the unique distinction of being the oldest, continuously operating theatre in the English-speaking world, having served Philadelphia audiences for over 200 years!

Today, under the direction of Producing Artistic Director Bernard Havard, Walnut Street Theatre is in its 33rd season as a self-producing, non-profit theatre company. Walnut Street Theatre continues to entertain and enlighten diverse audiences with high quality theatrical programming. With more than 50,000 subscribers, the Walnut is also the most subscribed theatre company in the world!

Last season, 180,000 children and adults were impacted by the Walnut's Education Programs- including our theatre school with classes for kids and adults, Camp Walnut, Our Touring Outreach Program to local schools and our artist in residency programs.



### WALNUT STREET THEATRE EDUCATION STAFF

### ADDITIONAL RESOURCES

**DIRECTOR OF EDUCATION**  
**ASSISTANT DIRECTOR OF EDUCATION**  
**EDUCATION PROGRAMS ASSOCIATE**  
**EDUCATION PRODUCTION ASSOCIATE**  
**EDUCATION APPRENTICE**  
**ACTING APPRENTICES**

Thomas Quinn  
Ashley Kerns  
Patrick Shane  
Amanda Gallup  
Angie Confredo  
Jared Calhoun  
Devon Fields  
Donovan Lockett  
Kathryn Miller

#### WEB

- **Educational Drama Activities**  
<http://dramagames.info/>
- **Walnut Street Theatre Touring Outreach Company**  
<https://walnutstreettheatre.org/education/outreach.php>

### ORIGINAL CREATIVE TEAM

**A Play by:**  
Rick Elice

**Based on the novel by:**  
Dave Barry & Ridley Pearson

**Music by:**  
Wayne Barker

**Sponsored by:**  
Frank and Ramona Gwynn

**Community Partner:**

**Media Partners:**



### Rick Elice

Elice earned his BA from Cornell University, his MFA from the Yale Drama School and is a Teaching Fellow at Harvard. Elice with Marshall Brickman wrote the book for the Broadway musical *Jersey Boys* which received a Tony Award nomination and a Drama Desk nomination for best book for a musical in 2006. With Roger Rees, he wrote the popular thriller, *Double Double*, which has been translated into 16 languages.

He wrote *Peter and the Starcatcher*, based on the 2006 novel of the same name by Dave Barry and Ridley Pearson, which opened in California in 2009 and played off-Broadway in 2011. The play moved to Broadway, opening at the Brooks Atkinson Theatre on April 15, 2012. "Peter and the Starcatcher" received 9 Tony Award nominations, more than any new American play in the history of the Tony Awards. On June 11, 2012, the play won 5 Tony Awards. The play enjoyed a successful tour throughout North America in 2013-14.

# Walnut Street Theatre Educational Opportunities!

2015-2016  
SEASON

## WALNUT STREET THEATRE TOURING OUTREACH

BRING A SHOW TO YOUR SCHOOL!

*Oskar and the Big Bully Battle* (Bullying) Grades K-6  
*Only 13* (Choices) Grades 6-9  
*Freedom Riders* (Diversity) Grades 6-9  
*The Berenstain Bears Hospital Friends* (Family & Good Health) Grades pre K-3  
*The Adventures of Nick Nutrition and his Dog Fiber* (Nutrition) Grades K-6

Open a dialogue with students about issues  
that affect them!

Call 215-574-3550, ext. 584

## WALNUT STREET THEATRE FOR KIDS

BRING YOUR KIDS TO  
WALNUT STREET THEATRE!

*Shrek the Musical Jr.* (September/October)  
Charles Dickens' *A Christmas Carol* (December)  
*Zombie in Love* (February)  
*Freckle Face Strawberry the Musical* (March/April)  
*Miss Nelson Has a Field Day* (June)

Tickets just \$10-\$16

Read the books, then see the stories LIVE!

Call 215-574-3550, ext. 504



## The Theatre School at WALNUT STREET THEATRE

CLASSES FOR KIDS, STUDENTS  
AND ADULTS

For students from 5 to 105! Great for networking,  
providing a creative outlet and professional training!

Find your inner star at the Walnut!  
Call 215-574-3550, ext. 510

## RESIDENCY PROGRAM

LET US DESIGN A DRAMATIC  
AND EDUCATIONAL PROGRAM  
FOR YOUR SCHOOL!

We support teachers' objectives with personalized  
programs designed that meet your needs and budget.

Call 215-574-3550, ext. 511

# WHEN WE PLAY, LEARNING HAPPENS!